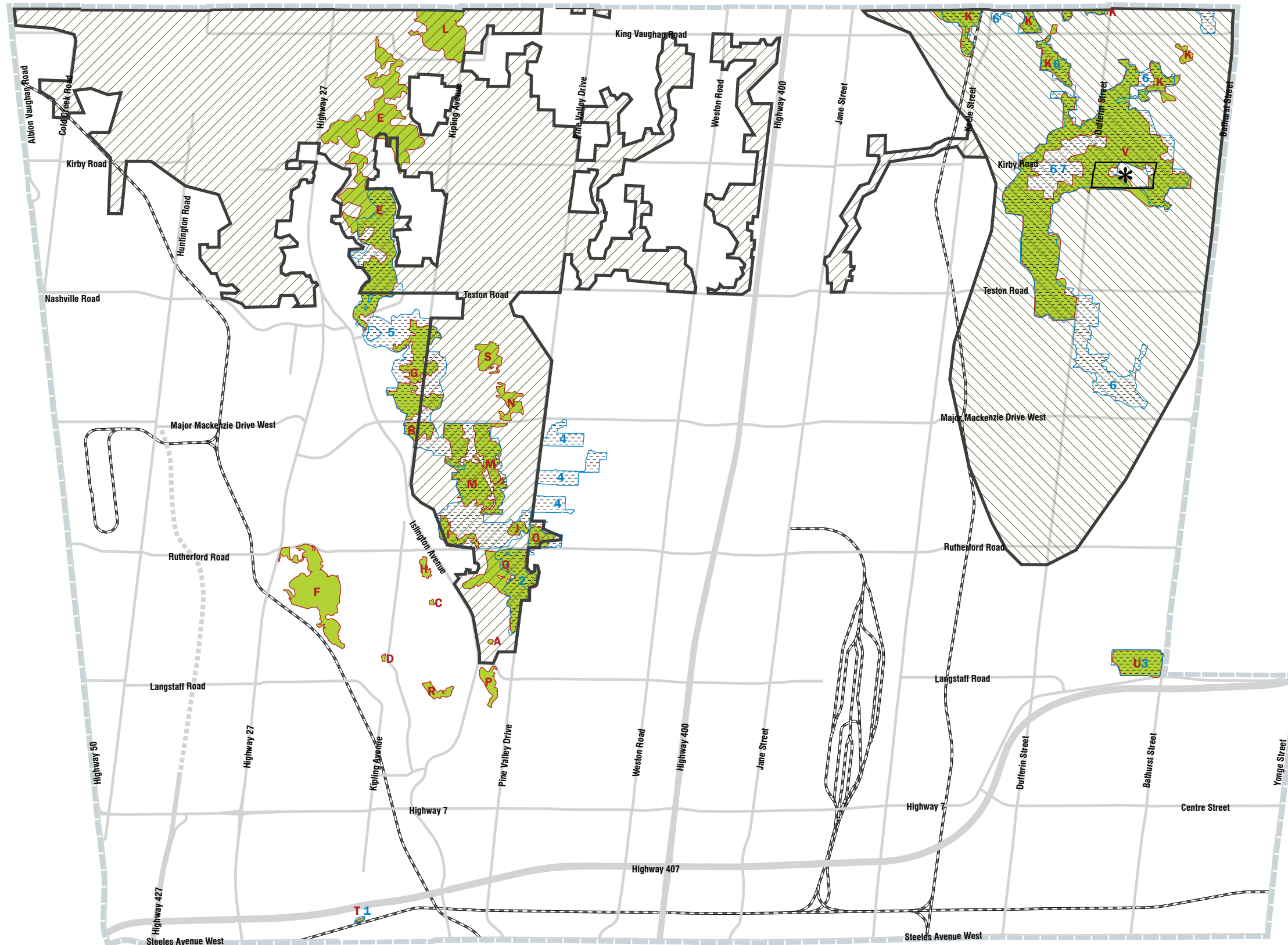


SCHEDULE 3 ESAs & ANSIs



- Environmentally Significant Areas
- Areas of Natural and Scientific Interest
- Greenbelt Plan Area¹
- Oak Ridges Moraine Conservation Plan Area¹
- Minister's Decision on ORMCP Designation Deferred
- Municipal Boundary

¹ See Schedule 4 for limits and land use information of the Greenbelt Plan Area and Oak Ridges Moraine Conservation Plan Area

Index of Environmentally Significant Areas

Area Name	ESA #	Watershed
A Boyd's Rock Cress	20	Humber River
B Boyd Forest	29	Humber River
C Carex Peckii Area No. 2	23	Humber River
D Clarence Street Forest	16	Humber River
E East Humber River	127	Humber River
F Elder Mills Forest	17	Humber River
G Glassgo	32	Humber River
H Graham's Forest	24	Humber River
I Graham's Forest Complex	25	Humber River
J Graham's Woods	27	Humber River
K King-Vaughan Complex	137	Humber River
L King Creek Forest	56	Humber River
M Kortright Area	28	Humber River
N McFayden Forest	30	Humber River
O McLeans's Forest	26	Humber River
P Pine Grove Forest	19	Humber River
Q Pine Valley Forest	21	Humber River
R Smith's Beech Forest	18	Humber River
S Sprengel's Forest	31	Humber River
T Woodbridge Cut	15	Humber River
U Baker's Wood's	128	Don River
V McGill Area	73	Don River

Index of Areas Natural and Scientific Interest

Area Name	Significance
1 Woodbridge Cut	Provincially Significant
2 Boyd Conservation Area & Adjacent Lands	Provincially Significant
3 Bakers Woods	Provincially Significant
4 Kleinburg Woodlots	Regionally Significant
5 Humber River	Regionally Significant
6 Maple Uplands and Kettle Wetlands	Regionally Significant
7 Oak Ridges Moraine Maple Spur	Regionally Significant

