

**Legend**

- Subwatershed Boundary
- Stream Reach Break
- Stream Reach Length
- Existing Stormwater Management Quality Control Pond

**Surficial Geology**

**Recent Deposits**

- Modern alluvial deposits
- Coarse-textured glaciolacustrine deposits
- Foreshore-basinal deposits
- Fine-textured glaciolacustrine deposits
- Interbedded flow till, rainout deposits and silt and clay

**Tills**

- Stone-poor, carbonate-derived silty to sandy till
- Glaciolacustrine-derived silty to clayey till

Basemapping from Ontario Ministry of Natural Resources, City of Vaughan and Toronto & Region Conservation Orthophotography, 1999 and 2007

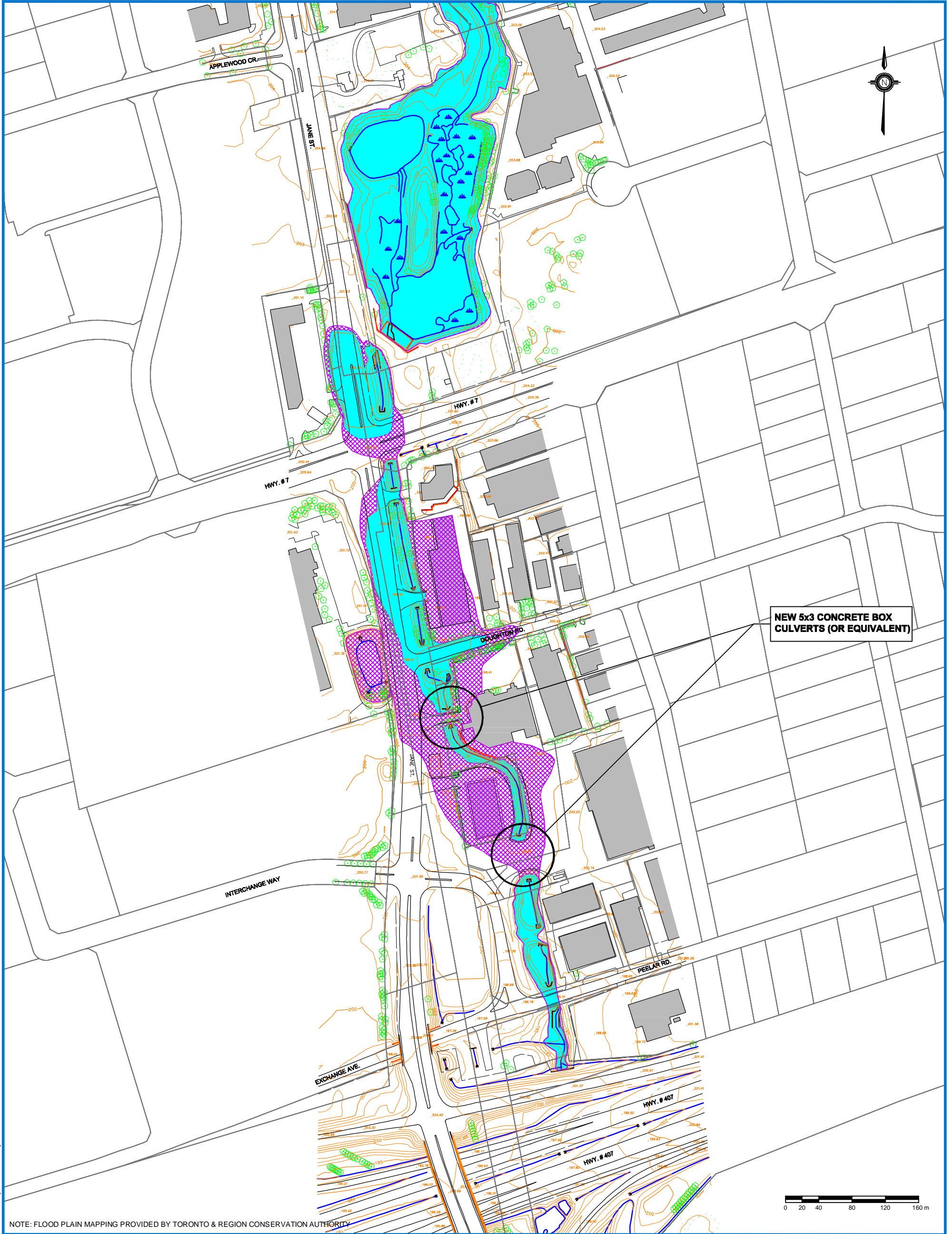
UTM Zone 17N, NAD 83

©2009 AECOM Canada Ltd. All Rights Reserved. This document is protected by copyright law and may not be used, reproduced or modified in any manner or for any purpose except with the written permission of AECOM Canada Ltd. ("AECOM") or a party to which its copyright has been assigned. AECOM accepts no responsibility, and denies any liability whatsoever, to any party that uses, reproduces, modifies, or relies on this document without AECOM's express written consent.

**Black Creek Stormwater Optimization Study Master Plan Class Environmental Assessment**

**Geomorphic Considerations**

May 2011  
Project 60143860  
**Figure 7**



NOTE: FLOOD PLAIN MAPPING PROVIDED BY TORONTO & REGION CONSERVATION AUTHORITY

DO NOT SCALE THIS DOCUMENT. ALL MEASUREMENTS MUST BE OBTAINED FROM STATED DIMENSIONS.

© 2009 AECOM Canada Ltd. All Rights Reserved. This document is protected by copyright law and may not be used, reproduced or modified in any manner or for any purpose except with the written permission of AECOM Canada Ltd. ("AECOM") or a party to which its copyright has been assigned. AECOM accepts no responsibility, and denies any liability whatsoever, to any party that uses, reproduces, modifies, or relies on this document without AECOM's express written consent.



**Legend**

- BUILDING
- WATERCOURSE
- CONTOUR (1m)
- TREE
- PROPERTY FABRIC

**FLOODLINES**

- 100-YEAR EVENT (EXISTING)
- 100-YEAR EVENT (PROPOSED)
- REGIONAL STORM

**EXTENT OF FLOODING**

- EXISTING
- PROPOSED

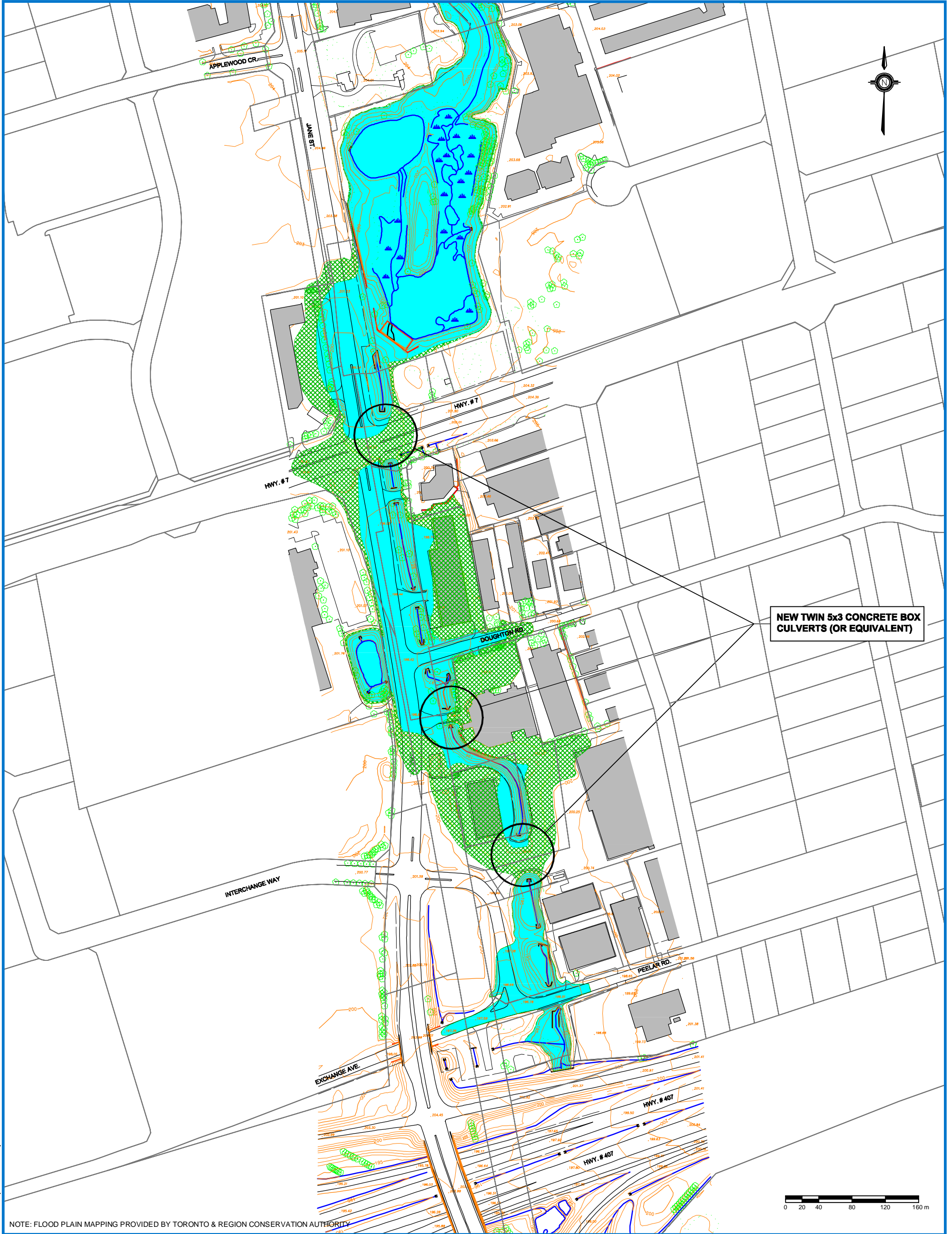


**Black Creek Stormwater Optimization Study  
Master Plan Class Environmental Assessment  
Flood Improvement Alternative F2  
100-Year Storm Improvements**

PROJECT NUMBER  
**60117240**

DATE  
**May 2011**

FIGURE NUMBER  
**8**



NOTE: FLOOD PLAIN MAPPING PROVIDED BY TORONTO & REGION CONSERVATION AUTHORITY

DO NOT SCALE THIS DOCUMENT. ALL MEASUREMENTS MUST BE OBTAINED FROM STATED DIMENSIONS.

© 2009 AECOM Canada Ltd. All Rights Reserved. This document is protected by copyright law and may not be used, reproduced or modified in any manner or for any purpose except with the written permission of AECOM Canada Ltd. ("AECOM") or a party to which its copyright has been assigned. AECOM accepts no responsibility, and denies any liability whatsoever, to any party that uses, reproduces, modifies, or relies on this document without AECOM's express written consent.



**Legend**

- BUILDING
- WATERCOURSE
- 195- CONTOUR (1m)
- TREE
- PROPERTY FABRIC

**FLOODLINES**

- AUGUST 19, 2005 STORM (EXISTING)
- AUGUST 19, 2005 STORM (PROPOSED)
- REGIONAL STORM

**EXTENT OF FLOODING (August 19, 2005)**

- EXISTING
- PROPOSED

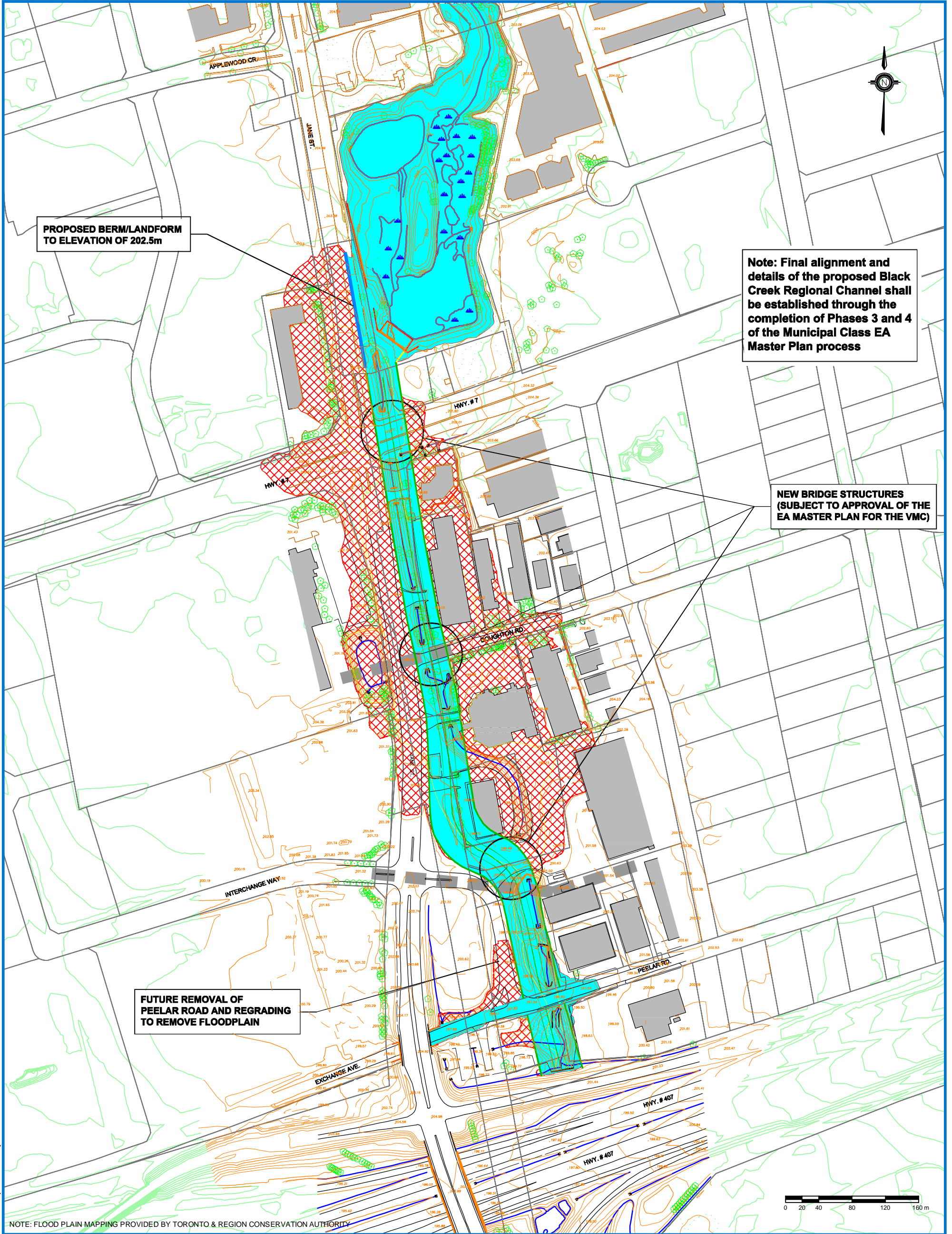


**Black Creek Stormwater Optimization Study  
Master Plan Class Environmental Assessment  
Flood Improvement Alternative F3  
August 19th, 2005 Storm Improvements**

PROJECT NUMBER  
**60117240**

DATE  
**May 2011**

FIGURE NUMBER  
**9**



FILE NAME: FLOOD IMPROVEMENT ALTS FIGS (MAY 2011)-R2.DWG

BY:TRCA

PLOT: 24/05/2011 3:56:25 PM

NOTE: FLOOD PLAIN MAPPING PROVIDED BY TORONTO & REGION CONSERVATION AUTHORITY  
DO NOT SCALE THIS DOCUMENT. ALL MEASUREMENTS MUST BE OBTAINED FROM STATED DIMENSIONS.

© 2009 AECOM Canada Ltd. All Rights Reserved. This document is protected by copyright law and may not be used, reproduced or modified in any manner or for any purpose except with the written permission of AECOM Canada Ltd. ("AECOM") or a party to which its copyright has been assigned. AECOM accepts no responsibility, and denies any liability whatsoever, to any party that uses, reproduces, modifies, or relies on this document without AECOM's express written consent.



Legend		FLOODLINES	
	BUILDING		AUGUST 19, 2005 STORM (EXISTING)
	WATERCOURSE		AUGUST 19, 2005 STORM (PROPOSED)
	-195- CONTOUR (1m)		REGIONAL STORM
	TREE	EXTENT OF FLOODING	
	PROPERTY FABRIC		EXISTING
	PROPOSED CHANNEL (TOP OF BANK)		PROPOSED
			APPROVED ROW ALIGNMENT IN ACCORDANCE WITH VAUGHAN METROPOLITAN CENTRE SECONDARY PLAN

**VAUGHAN**

**Black Creek Stormwater Optimization Study  
Master Plan Class Environmental Assessment  
Preferred EA Flood Improvement Alternative  
Regional Storm Improvements (F4)**

PROJECT NUMBER	DATE	FIGURE NUMBER
60117240	May 2011	10