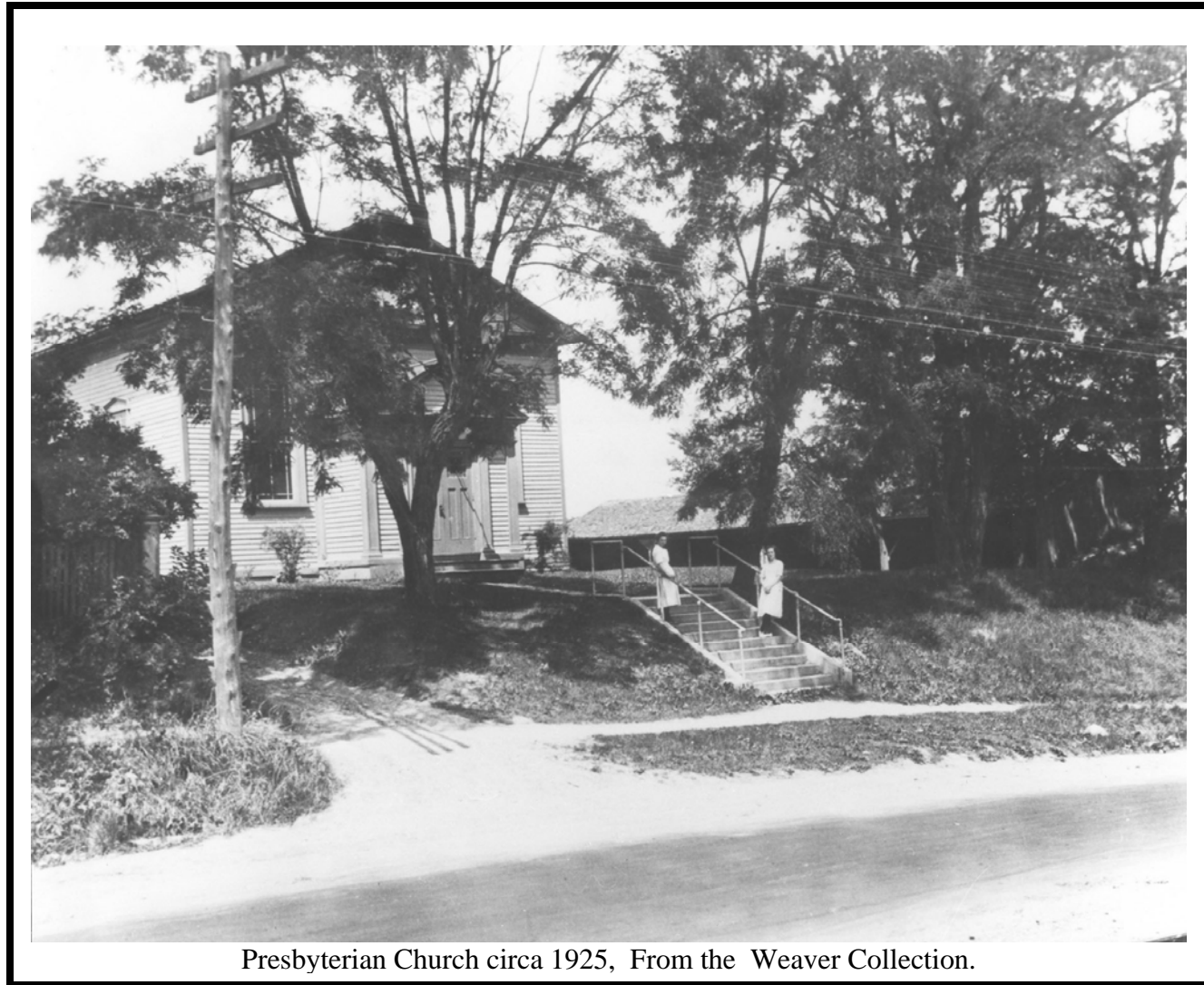


Thornhill Vaughan Heritage Conservation District Plan 2007



Presbyterian Church circa 1925, From the Weaver Collection.

Phillip H. Carter Architect and Planner
In Association with Paul Oberst Architect
OCTOBER 2007

User Guide to the Heritage District Plan

The Thornhill Vaughan Heritage Conservation District Plan 2007 is a comprehensive document of policies and guidelines which have been developed to help ensure the retention and conservation of the District's heritage resources and to guide future development so that it enhances the area's special character.

The following summary guide is provided for quick reference for the benefit of the occasional or first time user of the document.

Information Request

I want to know the **district boundaries** and if my property is a **heritage resource**

I want Information on the **area's history and special characteristics**

I want to undertake **improvements to a heritage building**

I want to make **changes to a non-heritage building**

I want to build a **new single detached house**.

I want to construct a **new building on Yonge Street**

I am starting a new business and want a **sign** and a **commercial patio**

I want to install **front and rear yard fencing**

I want information on appropriate **landscape treatments**

Where to Look

Review the boundaries in Section 1.0 and building classification information in Section 2.0

Consult the District Study document published under separate cover for the area history. Review Sections 2.1 and 2.2 for heritage characteristics.

Review the policies in Section 4.2 and the guidelines in Section 9.2

Review the policies in Section 4.3 and the guidelines in Section 9.3

Review the policies in Section 4.4 and the guidelines in Section 9.4

Review the policies in Section 4.6 and the guidelines in Section 9.4.3 and 9.5

Review the policies in Section 4.6.2 to 4.6.4 and the guidelines in Section 9.5

Review the policies in Section 4.5.3 and the guidelines in Section 9.6.4 and 9.6.5

Review the policies in Section 4.5 and the guidelines in Section 9.6

Definitions: These words, frequently used in the Plan, are defined as follows:

Compatible—that which is well suited; a harmonious relationship; consistent or in-keeping with; without a jarring contrast.

Incompatible—that which is mismatched or unsuited; incapable of coexisting harmoniously.

Complementary—that which is balanced or harmonizing.

Sympathetic—that which is designed in a sensitive or fitting way.

Controversial—a project or design that is not consistent with or compliant with the Heritage District Plan's policies and guidelines, or where the Plan does not address the issue.

Acknowledgements

The Thornhill Vaughan Heritage Conservation District Plan 2007 is the culmination of a great deal of interest and effort by local residents, municipal staff, Heritage Vaughan and Council. All had one objective in common – the desire to develop a plan that will help to ensure the conservation of Thornhill’s heritage resources and unique character for the enjoyment of future generations.

Thanks to City Staff from the Policy Planning Department and Cultural Services who gave assistance and guidance in the development of the process and documents for the Thornhill Vaughan Heritage Conservation District Plan 2007.

Thanks are also due to the Society for the Preservation of Historic Thornhill (SPOHT) and the Markham Library for permission to use historic images from the Weaver Collection, and of course to the Weavers for taking and collecting the pictures, and for gathering much historic information about the people and places of old Thornhill.

Special thanks to Adam Birrell, the SPOHT archivist, who was always ready with detailed information about the buildings.

THORNHILL VAUGHAN HERITAGE CONSERVATION DISTRICT PLAN 2007

This is one of three documents dealing with the Thornhill Vaughan Heritage Conservation District. The other two documents, published in separate volumes, are the Thornhill Plan Building Inventory, and the Thornhill Vaughan Heritage Conservation District Study 1984.

Table of Contents

User Guide	i
Acknowledgements	ii
Table of Contents	iii

Part A District Overview

1.0 Introduction

1.1	The Heritage Conservation District Concept	2
1.2	Unity of the Documents	2
1.3	Background to the District Plan	3
1.4	Purpose of the District Plan Review	4
1.5	Parts of the District Plan Review	4

2.0 Heritage Character and Heritage Statements

2.1	Examination	5
2.2	Individual Designations within the District	6
2.3	Listed Properties in the District	7
2.4	Community Consultation	8
2.5	Statement of Heritage Value	10
2.6	Statement of Heritage Attributes	11
2.7	Statement of Objectives in Designating the District	11
2.7.1	Overall Objective	11
2.7.2	Objectives for Heritage Buildings	11
2.7.3	Objectives for Non-heritage Buildings	11
2.7.4	Objectives for Landscape/Streetscape	11
2.7.5	Objectives for New Development	12
2.7.6	Objectives for Community Support	12
2.7.7	Objectives for Business/Tourism	12

3.0 Review and Interpretation

3.1	Review of Activities in the District	13
3.1.1	Activities Subject to Review	13
3.1.2	Activities Exempt from Review	14
3.2	Contexts for Interpretation	14

Part B District Policies

4.0 District Policies—Buildings and Sites

4.1	Overview	16
4.2	Heritage Buildings	17
4.2.1	Conservation of Heritage Buildings	18
4.2.2	Alterations and Additions to Heritage Buildings	19
4.2.3	Relocation of Heritage Buildings	19
4.2.4	Demolition of Heritage Buildings	19
4.2.5	Salvage of Historic Building Materials and Features	19
4.2.6	Uses of a Heritage Building	20
4.3	Non-heritage Buildings	20
4.3.1	Additions and Alterations	20
4.3.2	Design Approach	20
4.3.3	Demolition of Non-Heritage Buildings	20
4.4	New Residential Buildings	20
4.4.1	Design Approach	21
4.5	Landscapes	21
4.5.1	Landscape Treatment	21
4.5.2	Trees and Shrubs	21
4.5.3	Fences	22
4.5.4	Driveways (Residential)	22
4.6	Commercial Features	23
4.6.1	Commercial Signage	23
4.6.2	Commercial Awnings	23
4.6.3	Commercial Patios	23
4.6.4	Commercial Parking Lots	23

5.0 District Policies—Streetscape and Infrastructure

5.1	Overview	24
5.2	Roads, Curbs, and Municipal Services	24
5.3	Sidewalks and Boulevards	24
5.4	Street Furniture and Pedestrian Amenities	25
5.5	Streetlights and Utilities	25
5.6	Public Signage	26
5.7	Vegetation	27

6.0 District Policies—Special Areas and Projects

6.1	Yonge Street	28
	6.1.1 Yonge Street Streetscape	28
	6.1.2 Yonge Street Redevelopment	30
6.2	Commemorative and Interpretive Signs	31
6.3	Communication and Education	32
	6.3.1 Communications	32
	6.3.2. Education	33

7.0 Municipal Policies

7.1	Overview	34
7.2	Recognizing the Heritage District Plan	34
7.3	Land Use in the District	34
7.4	Land Severance and Minor Variances	35
7.5	Site Plan Control	35
7.6	Signage By-law	36
7.7	Demolition Control	36
7.8	Heritage Easements	36
7.9	Financial Incentives	36
	7.9.1 Tax Measures	36
	7.9.2 Grants and Loans	36
7.10	Community Improvement Areas	37
7.11	Tree Preservation	37

Part C Implementing the District

8.0 Implementation

8.1	Overview	39
8.2	Required Permits	39
8.3	Streamlining the Process	40
8.3.1	Heritage Permit	41
8.3.2	Heritage Permit with Building Permit	43
8.3.3	Heritage Permit with Site Plan Approval	44
8.3.4	Review of Zoning Amendment and Committee of Adjustment Applications	45
8.4	Resolving Issues and Appeals	46
8.5	Plan Renewal	46
8.5.1	Reviewing Bodies	46
8.5.2	Regular Review	47
8.5.3	Amendments	47
8.6	Enforcement	47
8.7	Public Awareness	47
8.8	Application Checklist	49
8.8.1	Heritage Permit Checklist	49
8.8.2	Heritage Permit with Building Permit Checklist	50
8.8.3	Heritage Permit with Site Plan Review Checklist	51

Part D Design Guidelines

9.0 Guidelines for Buildings and Surroundings

9.1	Architectural Style	54
9.1.1	Heritage Styles—Residential Buildings	56
9.1.2	Heritage Styles—Commercial Buildings	68
9.1.3	Heritage Styles—Agricultural Buildings	71
9.1.4	Non-Heritage Styles—Residential Buildings	72

9.2	Heritage Design and Details	75
9.2.1	Introduction	75
9.2.2	Composition	75
9.2.3	Entrances and Doors	77
9.2.4	Windows and Shutters	79
9.2.5	Bay Windows	80
9.2.6	Gable Ends	81
9.2.7	Dormers	82
9.2.8	Porch Design	83
9.2.9	Brickwork	84
9.2.10	Wood Siding	86
9.2.11	Fencing	87
9.3	Existing Heritage Buildings	88
9.3.1	Overview	88
9.3.2	Historical and Technical Research	89
9.3.3	Recording Original Construction	89
9.3.4	Building Maintenance	90
9.3.5	Repair and Restoration	94
9.3.6	Renovations	99
9.3.7	New Additions to Heritage Buildings	100
9.3.8	Outbuildings for Heritage Buildings	102
9.4	Existing Non-Heritage Buildings	103
9.4.1	Design Approaches	103
9.5	New Development	105
9.5.1	Overview	105
9.5.2	Residential Area	106
9.5.3	Yonge Street Commercial Areas	111
9.6	Streetscape Work	124
9.6.1	Overview	124
9.6.2	The Residential Streets	125
9.6.3	Commercial Core	126
9.7	Landscaping	130
9.7.1	Planting	130
9.7.2	Warning! Invasive Species	131

9.8	Building Materials Checklist	132
9.8.1	Heritage Buildings	133
9.8.2	Non-Heritage Buildings	134

10.0 Sources

10.1	Documents Available for Guidance	135
10.2	Bibliography	135

Part E Appendices

Appendix A:	A Glossary of Architectural Terms	138
-------------	-----------------------------------	-----