

**NOTICE OF PUBLIC INFORMATION CENTRE #1**  
**ENVIRONMENTAL ASSESSMENT STUDY**

**Part A: Portage Parkway Widening from Applewood Crescent to Jane Street and  
 Part B: Portage Parkway Extension from Jane Street to Creditstone Road**

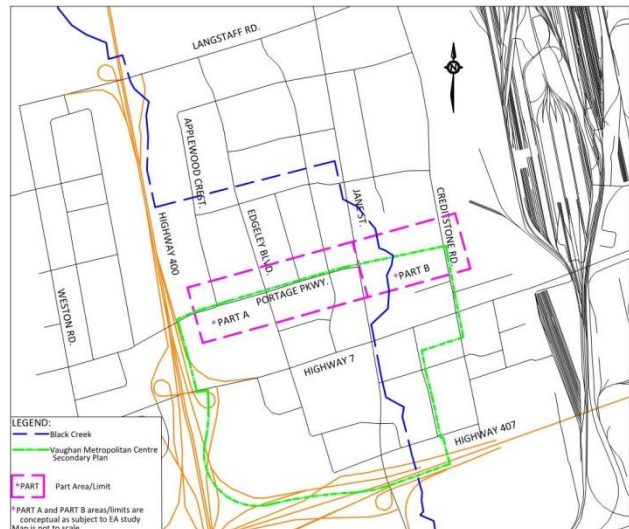
**THE STUDY**

The City of Vaughan Transportation Master Plan (TMP) – A New Path (2013) – identified the need to widen Portage Parkway from Applewood Crescent to Jane Street (Part A) and extend Portage Parkway from Jane Street to Creditstone Road (Part B) as a strategic network improvement and in support of the development in the Vaughan Metropolitan Centre.

**THE PROCESS**

The TMP – A New Path, having completed Phases 1 and 2 of the Municipal Class Environmental Assessment (EA) process, has identified projects which will improve connections to local and regional infrastructure, provide access to future developments, support transit-oriented nodes and corridors, and enhance transit ridership, cycling and walking.

The TMP identified the need to widen Portage Parkway to four lanes from Applewood Crescent to Jane Street and establish a new four lane road from Jane Street to Creditstone Road and recommended the project be carried forward to Phases 3 and 4 of the Class EA process.



The City has initiated the Class EA Study, which will establish the preferred alternative design for the widening, extension and improvements for:

- PART A\* :Portage Parkway Widening from Applewood Crescent to Jane Street
- PART B\*: Portage Parkway Extension from Jane Street crossing the Black Creek channel to Creditstone Road

The Study will consider the technical, environmental, socio-economic and financial criteria as the basis for the assessment. The Study, proceeding for two interrelated parts, is being undertaken in accordance with “Schedule C” of the Municipal Engineers Association Municipal Class Environmental Assessment (October 2000, as amended in 2007 & 2011). Separate Environmental Study Reports (ESRs) for Part A and B will be prepared and available for public review and comment on study completion.

**PUBLIC CONSULTATION – YOU ARE INVITED**

Consultation with interested stakeholders (public and agencies) is a key component of the study. You are invited to attend the first Public Information Centre (PIC) for this study, which is being held to present the study, including information on alternative planning solutions, existing conditions, evaluation criteria, and design considerations.

The PIC will be an opportunity for the public to review project information and ask questions or discuss comments with members of the project team and is being held on:

**DATE: Wednesday, November 25, 2015**

**TIME: 5:00 pm to 8:00 pm (drop-in session)**

**LOCATION: Homewood Suites by Hilton, 618 Applewood Crescent, Vaughan, Ontario**

For information on study progress and updates, please visit:

[http://www.vaughan.ca/projects/projects\\_and\\_studies/environmental\\_assessment\\_studies/Pages/Class-EA-Study-for-Portage-Parkway.aspx](http://www.vaughan.ca/projects/projects_and_studies/environmental_assessment_studies/Pages/Class-EA-Study-for-Portage-Parkway.aspx)

**CONTACTS**

If you have any questions/comments and cannot attend the PIC, please contact:

**Marta Roias, RPP**  
**City of Vaughan Project Manager**  
 2141 Major Mackenzie Drive  
 Vaughan, ON L6A 1T1  
 T: 905-832-8585 Ext. 8026  
 F: 905-832-6145  
 E: [Marta.Roias@vaughan.ca](mailto:Marta.Roias@vaughan.ca)

or  
**Stephen Keen, P.Eng.**  
**CIMA Canada Inc. Consultant Project Manager**  
 3027 Harvester Road, Suite 400  
 Burlington, ON L7N 3G7  
 T: 289-288-0287 Ext. 6834  
 F: 289-288-0285  
 E: [Stephen.Keen@cima.ca](mailto:Stephen.Keen@cima.ca)

*Information is being collected under the Freedom of Information and Protection of Privacy Act. With the exception of personal information, all comments will become part of the public record.*

**ANDREW PEARCE**, Director, Development Engineering and Infrastructure Planning