

# Edgeley Pond + Park



BLACK CREEK 1955



VAUGHAN + WATERSHED CONTEXT

## PURPOSE OF MEETING

This Public Meeting is an opportunity for you to review the project background, process and provide input.

City of Vaughan staff and members of the Project Team are available to answer any questions that you may have about the project and how it may impact you.

Feedback from the community will be central to the development of the detailed design. We will be presenting several design concepts at our next public meeting in **early spring 2017** to hear your thoughts and suggestions. We will then present the final design to you in the **early fall 2017**.

## STORMWATER MANAGEMENT (SWM)

In its current condition, Edgeley Pond is undersized in its operation as a SWM facility. Reorganization and retrofitting of the pond is required to unlock further development potential in the area, provide water quality and flood control and optimize ecological function.

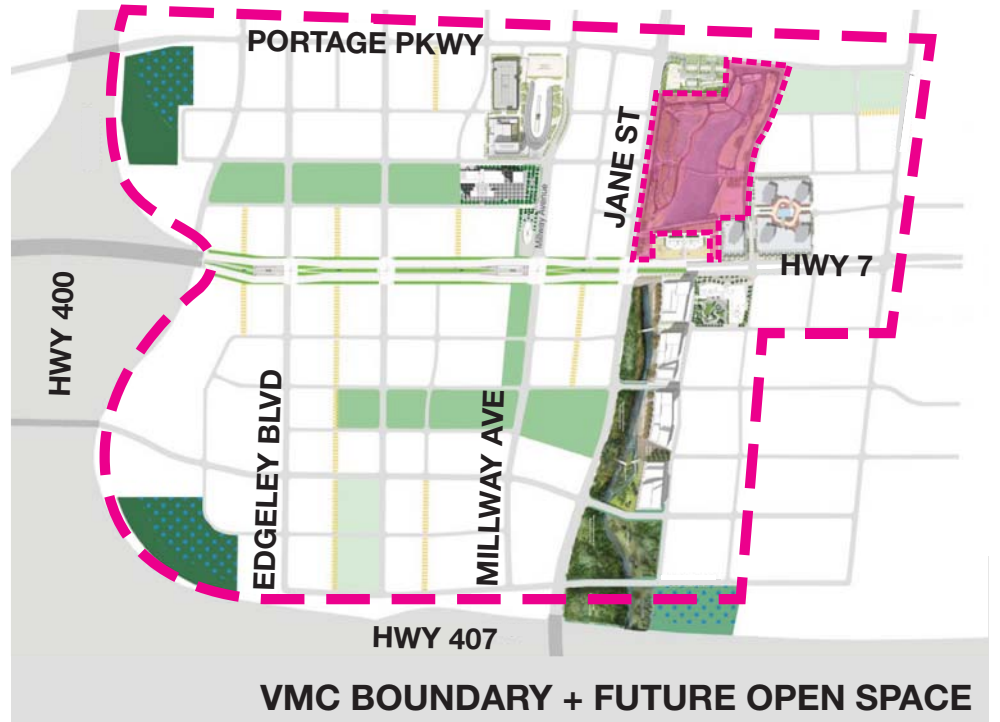
As part of the proposed Black Creek Corridor Renewal Process running along Jane Street south of Highway 7 in the VMC, Edgeley Pond and Park will form an important public destination with a mandate to resolve stormwater management and ecological issues, and cultivate resilience to climate change.

The key goals of this important city project are to: improve stormwater management and Black Creek corridor functional design, improve ecological function and provide functional natural habitats, generate spaces for active and passive recreation, showcase design innovation, plan for strategic phasing and implementation, enable further development of the downtown and deliver a first-of-its kind destination for Vaughan and the Region of York.

## BACKGROUND

Edgeley Pond and Park, the largest open space and City-owned piece of land in the new Vaughan Metropolitan Centre (VMC), will become an anchor for the VMC and an amenity at the centre of its first neighbourhood.

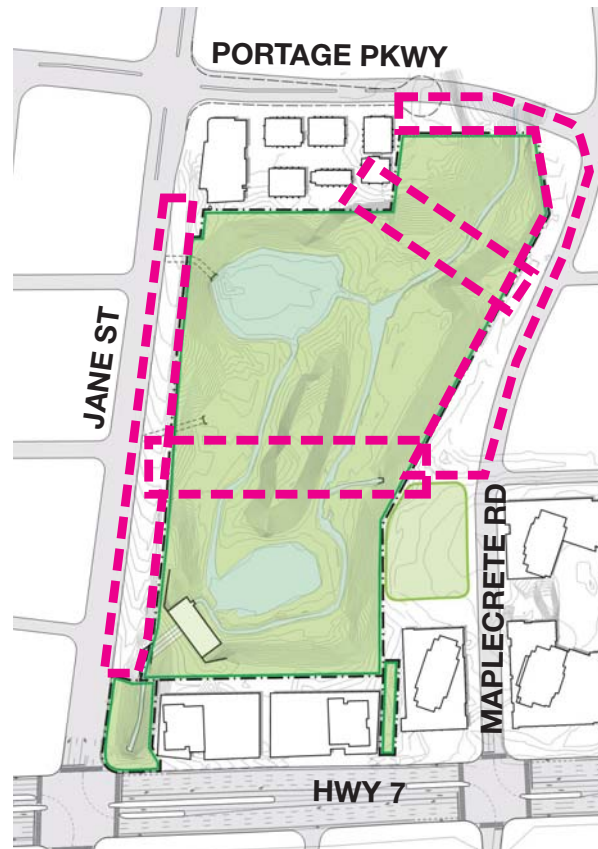
The vision for the redevelopment of Edgeley Pond and Park is to build a signature gateway and sustainable amenity at the centre of the downtown that functions as a hybrid of vital stormwater management (SWM) infrastructure and innovative public park and open space.



VMC BOUNDARY + FUTURE OPEN SPACE



CURRENT LIMITS OF REGULATORY FLOODPLANE (HURRICANE HAZEL 1954)



SCHEMATIC DESIGN WILL BE COMPLETED FOR ALL POND + PARK ELEMENTS

- CURRENT PHASE- CONSTRUCTION BEGINNING SUMMER 2018
- FUTURE PHASE

CURRENT + FUTURE WORK

## Public Meeting 1

Review background material + provide your thoughts

## Public Meeting 2

Review design concepts + talk about your thoughts

## Public Meeting 3

Presentation of the final design + hear your thoughts