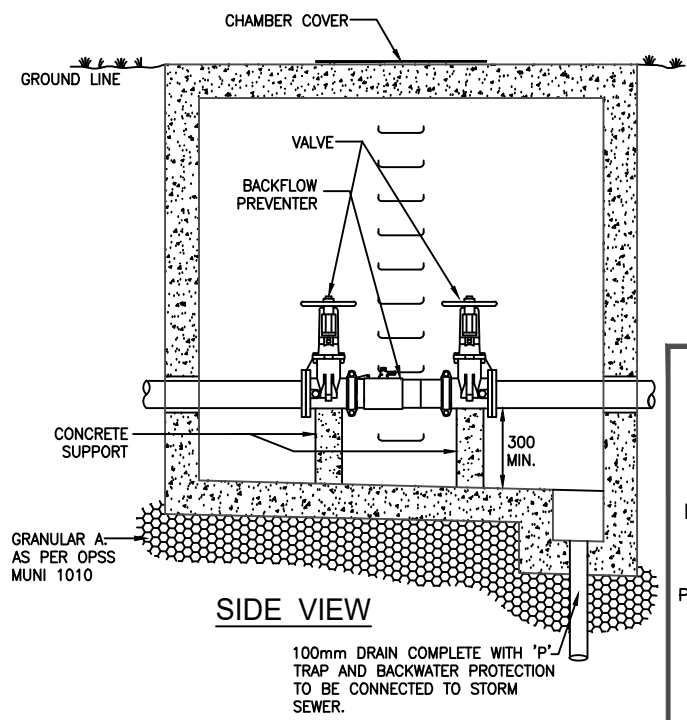
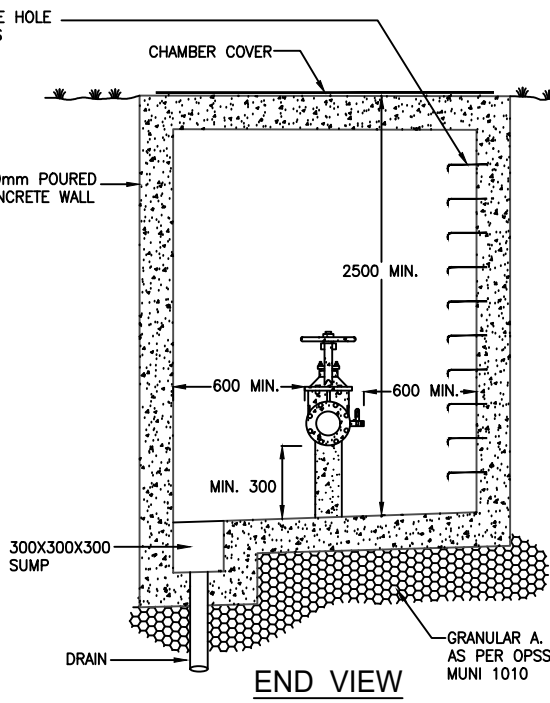
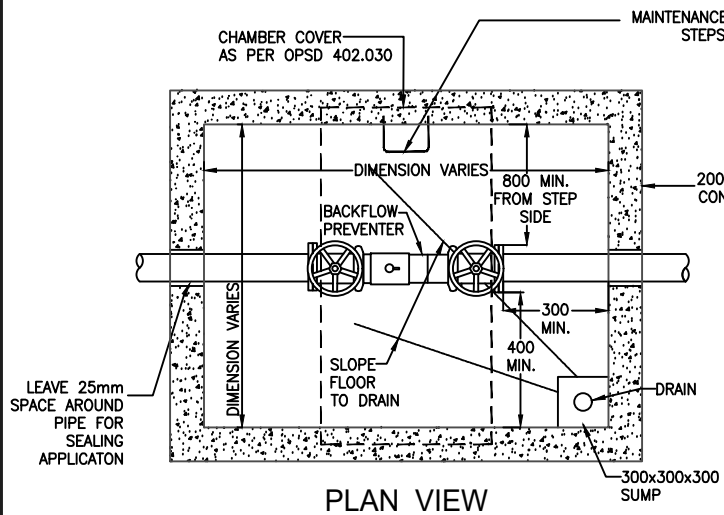
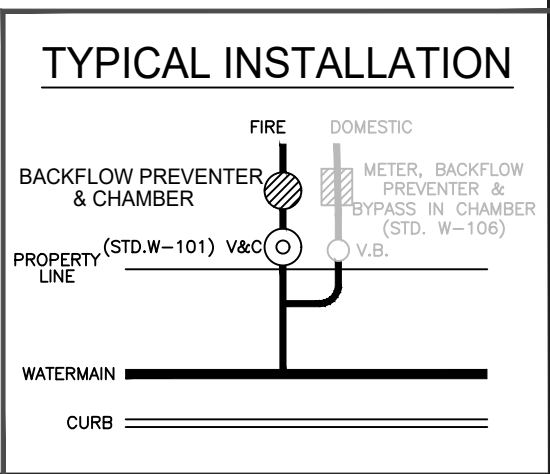


Acad File: \\vifz\DeptShare\Infrastructure Delivery\Infrastructure Programming\PMO City Standards\Design Criteria 2016\City Standards Update Folder\CityStandardDrawings\_CAD\_2021\W-111.dwg



- NOTES:**
- BACKFLOW DEVICE TO BE SELECTED, INSTALLED AND TESTED IN CONFORMANCE WITH CSA B64 "SELECTION + INSTALLATION OF BACKFLOW PREVENTERS AND AS PER MANUFACTURER RECOMMENDATIONS.
  - BACKFLOW DEVICE TO COMPLY WITH BY-LAW 004-2018 AS AMMENDED.
  - REDUCED PRESSURE ASSEMBLY (RP) BACKFLOW PREVENTER ARE NOT PERMITTED IN BELOW GROUND APPLICATIONS.
  - BACKFLOW DEVICE TO REMAIN ACCESSIBLE AT ALL TIMES.
  - THIS DRAWING INDICATES MINIMUM CLEARANCE AND ACCESS ONLY.
  - CHAMBER TO BE OF WATER TIGHT CONSTRUCTION.
  - 100mm DIA. DRAIN COMPLETE WITH 'P' TRAP AND BACK WATER PREVENTER VALVE TO BE CONNECTED TO STORM SEWER.
  - MAINTENANCE HOLE STEPS AS PER OPSD 405.020
  - TEST COCKS ARE TO BE PROTECTED WITH WATER TIGHT PLUGS.
  - MINIMUM DEPTH OF CHAMBER = 2.5 METRES.
  - AS PER ONTARIO BUILDING CODE SECTION 7.6.2.2:
    - EVERY POTABLE WATER SYSTEM THAT SUPPLIES A FIXTURE OR TANK THAT IS NOT SUBJECT TO PRESSURE ABOVE ATMOSPHERIC SHALL BE PROTECTED AGAINST BACK-SIPHONAGE BY A BACKFLOW PREVENTER.
    - WHERE A POTABLE WATER SUPPLY IS CONNECTED TO A TANK, COOLING JACKET, LAWN SPRINKLER SYSTEM, YARD HYDRANT OR OTHER DEVICE WHERE A NON-PORTABLE FLUID MAY BE UNDER PRESSURE THAT IS ABOVE ATMOSPHERIC OR THE WATER OUTLET MAY BE SUBMERGED IN THE NON-PORTABLE FLUID, THE WATER SUPPLY SHALL BE PROTECTED AGAINST BACKFLOW BY A BACKFLOW PREVENTER.
    - WHERE A HOSE BIB IS INSTALLED OUTSIDE A BUILDING, INSIDE A GARAGE, OR WHERE THERE IS AN IDENTIFIABLE RISK OF CONTAMINATION, THE POTABLE WATER SYSTEM SHALL BE PROTECTED AGAINST BY A BACKFLOW PREVENTER.
  - WHERE PRECAST CONCRETE ADJUSTER RINGS (E.G., MODULOC) ARE REQUIRED, THEY ARE TO BE MAX. 300 mm OTHERWISE POURED COLLARS ARE TO BE USED IN CONJUNCTION WITH RINGS.
  - THIS STANDARD APPLIES TO BUILDINGS WITH OUTSIDE HYDRANTS
  - DIMENSIONS OF THE CHAMBER AND ALL INTERNAL CONNECTION SHALL BE VERIFIED BEFORE INSTALLATION.



**mm** DIMENSIONS IN MILLIMETRES EXCEPT AS NOTED

4.		
3.		
2.		
1.	CLARIFY TYPICAL INSTALLATION	DEC. 2020
	REVISIONS	DATE



**CITY OF VAUGHAN ENGINEERING STANDARD**  
**BACKFLOW PREVENTER & CHAMBER**  
 FOR 100mm THROUGH 300mm  
**DOUBLE CHECK VALVE ASSEMBLY**

NOT TO SCALE      DESIGNED: ENG. DEPT.      STD. DWG.  
 REVISION: 01      DATE: DEC. 2020      **W - 111**