

# Appendix B1: Phase 1 Public Consultation Material, Kleinburg Parking Strategy



# **NOTICE OF STUDY COMMENCEMENT AND ADVERTISEMENTS**



# Working to accommodate long-term parking needs in Kleinburg

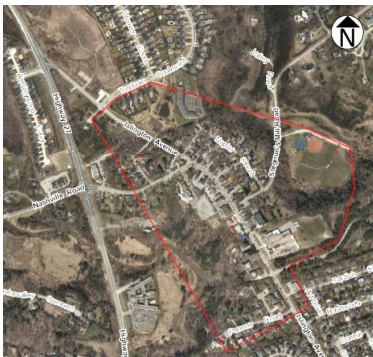
SEP. 04, 2019

## Parking Strategy Review for the Kleinburg Village Now Underway

The City of Vaughan is working to develop a parking management strategy that will help address parking needs in the Kleinburg Village. Kleinburg is one of Vaughan's premier commercial neighbourhoods with a charming residential community at its core, and a rich and varied history. It is also a destination for thousands of visitors. Limited public parking is recognized as a significant challenge.

### ABOUT THE PARKING STRATEGY REVIEW

The City of Vaughan retained McIntosh Perry Consulting Engineers to undertake a study to review and assess parking requirements in Kleinburg. The study is underway and the community is invited to participate in the process and provide input.



The village is home to more than 60 retail and service businesses, as well as schools, libraries and art galleries. Parking in this area has become an outstanding barrier for growth due

to limited public parking, and increasing populations and visitors.

The Kleinburg Parking Strategy review will explore opportunities to accommodate immediate and long-term needs for parking in the area through a comprehensive, forward-looking strategy. The strategy will assess the current parking conditions, recommend implementable parking management solutions and identify sustainable sources of funding or financing alternatives. The review is expected to be completed by May 2020.

### SHARE YOUR FEEDBACK

Collecting feedback from the community is vital to the success of the study. Whether a resident, business owner, working professional or occasional visitor, your experience with parking in the area is important and will help inform future recommendations. Several opportunities to provide input will be provided:

- **INFORMATION AND FEEDBACK SESSION:** This will be an opportunity to learn about the project and provide input on the existing Kleinburg parking situation. The public will be consulted on issues, opportunities, needs, priorities and desired outcomes. This drop-in session will take place on **Thursday, Sept. 26 from 5 p.m. to 8 p.m. at Pierre Berton Heritage Centre, 10418 Islington Ave.**
- **ONLINE SURVEY:** The online survey will collect input on immediate and future parking needs, including issues, opportunities and desired outcomes. The online survey, will be published on [vaughan.ca/KleinburgParking](http://vaughan.ca/KleinburgParking) when it becomes available.
- **EMAIL OR TELEPHONE:** Comments or questions can also be directed to:  
Samar Saadi Nejad, P.Eng.  
Manager, Development Transportation Engineering, City of Vaughan  
Tel. 905-832-2281, ext. 8253  
Email: [samar.saadinejad@vaughan.ca](mailto:samar.saadinejad@vaughan.ca)  
  
Mehemed Delibasic, P.Eng.  
Consultant Project Manager  
McIntosh Perry Consulting Engineers Ltd.  
Tel. 289-319-3112  
Email: [m.delibasic@mcintoshperry.com](mailto:m.delibasic@mcintoshperry.com)



# Working to accommodate long-term parking needs in Kleinburg

The City of Vaughan is working to develop a parking management strategy that will help address parking needs in the Kleinburg Village core. Kleinburg is one of Vaughan’s premier commercial neighbourhoods and a destination for thousands of visitors. Limited public parking is recognized as a significant challenge.

As part of the strategy, the City must assess the current parking conditions in the area, including understanding the existing parking capacity versus current usage, the various travel options that are preferred for moving around and through Kleinburg, and the general duration of stay of visitors to Kleinburg.

As part of this data collection, McIntosh Perry — the consultant that was hired to develop the parking strategy — will be observing vehicles in on-street and off-street customer parking facilities located on privately owned commercial property (such as grocery stores, strip malls, etc.). The data they are collecting are partial vehicle licence plate numbers — that is the first four digits of the licence plate number only. This specific data will ensure the City captures a unique sample of vehicles that tell a true story of the current parking situation in Kleinburg. The parking assessment will be conducted over the course of three months starting Thursday, Aug. 15, 2019. The data collected during this time will not be stored beyond the duration of the parking study, which is anticipated to be complete by May 2020. It will be compiled and used by the City and its authorized agents for analysis and statistical purposes in determining parking needs.

Thank you for your co-operation as we undertake this important city-building initiative.

## NOTICE OF COLLECTION

Information obtained during this assessment period is collected under the authority of the Municipal Act, 2001 and will be used for the purpose of assessing the current parking conditions in the Kleinburg Village core. This information will be used by the City of Vaughan and will become part of the City of Vaughan’s Development Engineering files for the duration of the study. Questions about this collection can be directed to Samar Saadi Nejad, Manager, Development Transportation Engineering, Development Engineering department, at [samar.saadinejad@vaughan.ca](mailto:samar.saadinejad@vaughan.ca) or 905-832-2281, ext. 8253.





# KLEINBURG PARKING STRATEGY

Join the conversation about  
parking in Kleinburg!

To learn about the project, upcoming  
Public Information Sessions and link  
to Online Surveys please visit:

[vaughan.ca/Kleinburgparking](http://vaughan.ca/Kleinburgparking)



The Kleinburg Parking Strategy Review will explore opportunities to accommodate immediate and long-term needs for parking in Kleinburg through a comprehensive, multi-modal and forward-looking strategy.



## Abseen Anya

---

**From:** Saadi Nejad, Samar <Samar.SaadiNejad@vaughan.ca>  
**Sent:** September 24, 2019 2:48 PM  
**To:** Mehemed Delibasic; Abseen Anya  
**Cc:** Wang, Tong; Pat Becker; Sorbara Domenic  
**Subject:** FW: RE: Social Media Ads

Hi Mehemed,

Please see below for your information.

Regards,

**Samar SaadiNejad, P.Eng., M.A.Sc.**  
**Manager, Development Transportation Engineering**  
905-832-8585, ext. 8253 | [samar.saadinejad@vaughan.ca](mailto:samar.saadinejad@vaughan.ca)

**City of Vaughan | Planning & Growth Management Portfolio**  
2141 Major Mackenzie Dr., Vaughan, ON L6A 1T1  
[vaughan.ca](http://vaughan.ca)



We have been heavily promoting the drop-in session for almost two weeks now, see below for some screen grabs:





**City of Vaughan**  @City\_of\_Vaughan · Sep 23

Do you have ideas on how to improve parking in #Kleinburg Village? The City of #Vaughan is hosting a drop-in session at Pierre Berton Heritage Centre on Thursday, Sept. 26 from 5 p.m. to 8 p.m. Have your say and learn more at [vaughan.ca/KleinburgParki...](http://vaughan.ca/KleinburgParki...)





City of Vaughan

Yesterday at 8:45 AM · 🌐



Do you have ideas on how to improve parking in #Kleinburg Village? The City of #Vaughan is hosting a drop-in session at Pierre Berton Heritage Centre on Thursday, Sept. 26 from 5 p.m. to 8 p.m. Have your say and learn more at [vaughan.ca/KleinburgParking](http://vaughan.ca/KleinburgParking).

**KLEINBURG**  
**PARKING STRATEGY**  
INFORMATION SESSION  
Thursday, Sept. 26 | 5 p.m. - 8 p.m.  
Pierre Berton Heritage Centre, 10418 ISLINGTON AVE.  
Attend a drop-in information and feedback session  
and provide input on parking in Kleinburg.  
The public will be consulted on issues, opportunities,  
needs, priorities and desired outcomes.

vaughan.ca/KleinburgParking

This e-mail, including any attachment(s), may be confidential and is intended solely for the attention and information of the named addressee(s). If you are not the intended recipient or have received this message in error, please notify me immediately by return e-mail and permanently delete the original transmission from your computer, including any attachment(s). Any unauthorized distribution, disclosure or copying of this message and attachment(s) by anyone other than the recipient is strictly prohibited.



NOTICE TO READERS: Register now to support your local journalism!

### PUBLIC INFORMATION AND FEEDBACK SESSION ON SEPTEMBER 26, 2019

#### EVENTS



#### Date & Time

Start Date: Thursday, 26 September 2019  
End Date: Thursday, 26 September 2019  
Time: 5:00 PM - 8:00 PM

ADD TO CALENDAR



#### Location & Venue

Pierre Berton Heritage Centre  
10418 Islington Ave., Vaughan ON, L0J 1C0

Information for GPS:  
Latitude: 43.8420101250471  
Longitude: -79.6267

Additional Detail:  
All Ages | Free

#### Contact info

Name: Samar Saadi Nejad  
Phone: 905-832-2281



#### EVENTS CALENDAR

DECEMBER 2019

SUN	MON	TUE	WED	THU	FRI	SAT
	1	2	3	4	5	6
8	9	10	11	12	13	14
15	16	17	18	19	20	21
22	23	24	25	26	27	28
29	30	31				

Today Event Available

#### FILTER BY CATEGORY

- Attractions

Name: Samar Saadi Nejad  
Phone: 905-832-2281

**Details**  
The City of Vaughan is working to develop a parking management strategy that will help address parking needs in the Kleinburg Village. The public will also be consulted on issues, opportunities, needs, priorities and desired outcomes.



**POPULAR EVENTS** [MORE EVENTS](#)



**EVENTS** Dec.20,2019 | 7:00 PM  
**The Nutcracker ballet**  
Community, Arts, Music, Family, Seasonal, Attractions | Richmond Hill Centre for the Performing Arts

**EVENTS** Dec.22,2019 | 11:00 AM  
**Chanukah Wonderland**

**EVENTS** Dec.21,2019 | 3:30 PM  
**York symphony orchestra holiday spectacular**

**EVENTS** Dec.22,2019 | 11:30 AM  
**Toronto Card Show – Sports Cards & Memorabilia**

**EVENTS** Dec.19,2019 | 8:00 PM  
**Serena Ryder Christmas Kisses Tour**

**EVENTS** Dec.21,2019 | 7:00 PM  
**Live Nativity Pageant**

**EVENTS** Dec.21,2019 | 10:00 AM  
**Holiday Market**

- Arts
- Attractions
- Community
- Dining Events
- Family
- Festivals and Fairs
- LGBTQ
- Music
- Seasonal
- Shows and Fairs
- Sports

**FILTER BY LOCATION**

- All region cities
- Markham
- Richmond Hill
- Vaughan
- Newmarket
- Aurora
- Thornhill

Although we endeavour to provide the most accurate description of the event listing and venue, we are not responsible or liable for errors and omissions in the event description, location or related activities. If necessary, please contact the event organizer for





## **AGENCY / STAKEHOLDER SESSION #1**



# **KLEINBURG PARKING STRATEGY REVIEW**

**AGENCY / STAKEHOLDER SESSION #1**

City of Vaughan  
September 17, 2019



## OUTLINE

- Introductions
- Meeting Objectives
- Study Background
- Study Objective and Approach
- Study Framework
- Study Outreach
- Discussion: Needs, Issues and Opportunities





# KLEINBURG PARKING STRATEGY - STUDY AREA

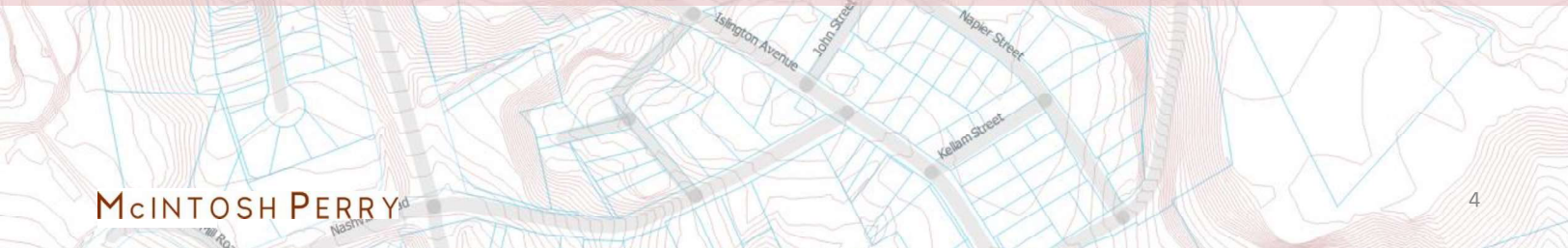




# MEETING OBJECTIVES



- **Introduce** the Kleinburg Parking Strategy Review and study team
- **Inform** on the intents and purposes of the study, the process being used, work completed to date and expected outcomes of the work
- **Gather** input on the parking issues, needs and opportunities from stakeholders throughout Kleinburg and surrounding areas
- **Open** communication channel for stakeholder input over the course of the study

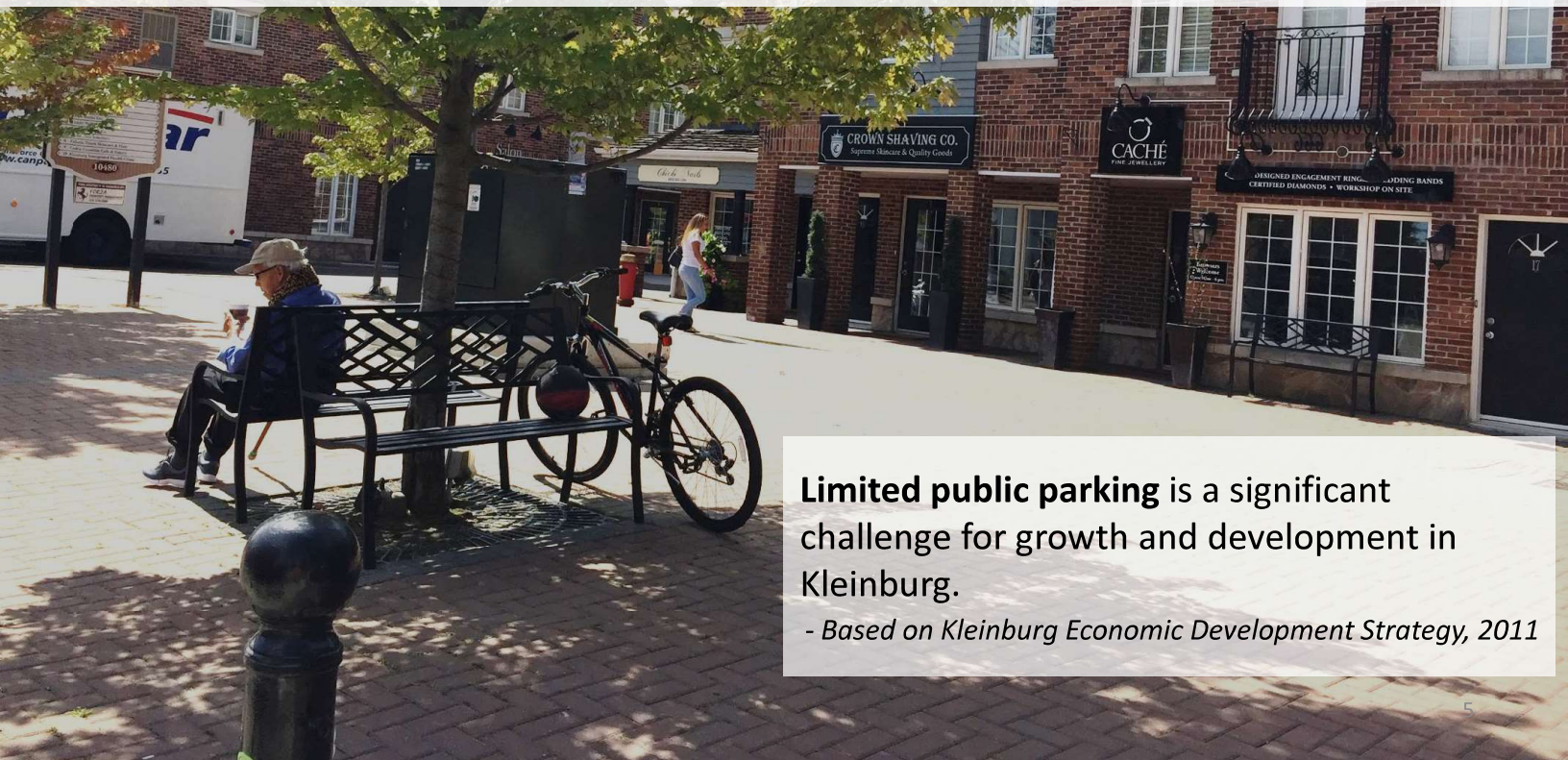




## STUDY BACKGROUND

### Historic Kleinburg Village features:

- Stellar heritage and natural assets
- Islington Avenue, a vibrant main street
- Mixed use and retail/commercial land uses that attract visitors and area residents



**Limited public parking** is a significant challenge for growth and development in Kleinburg.

- Based on Kleinburg Economic Development Strategy, 2011

# STUDY OBJECTIVE AND APPROACH



**OBJECTIVE:** Develop a comprehensive and forward-looking parking strategy to facilitate growth and accommodate immediate and long term parking demands in Kleinburg



## Immediate and Future Parking Needs

Short-term (1 – 5 years), Medium-term (5 – 10 years), Long-term (2041) Horizons



## Strategic Parking Management Plan

Comprehensive parking strategies, policies, and guidelines

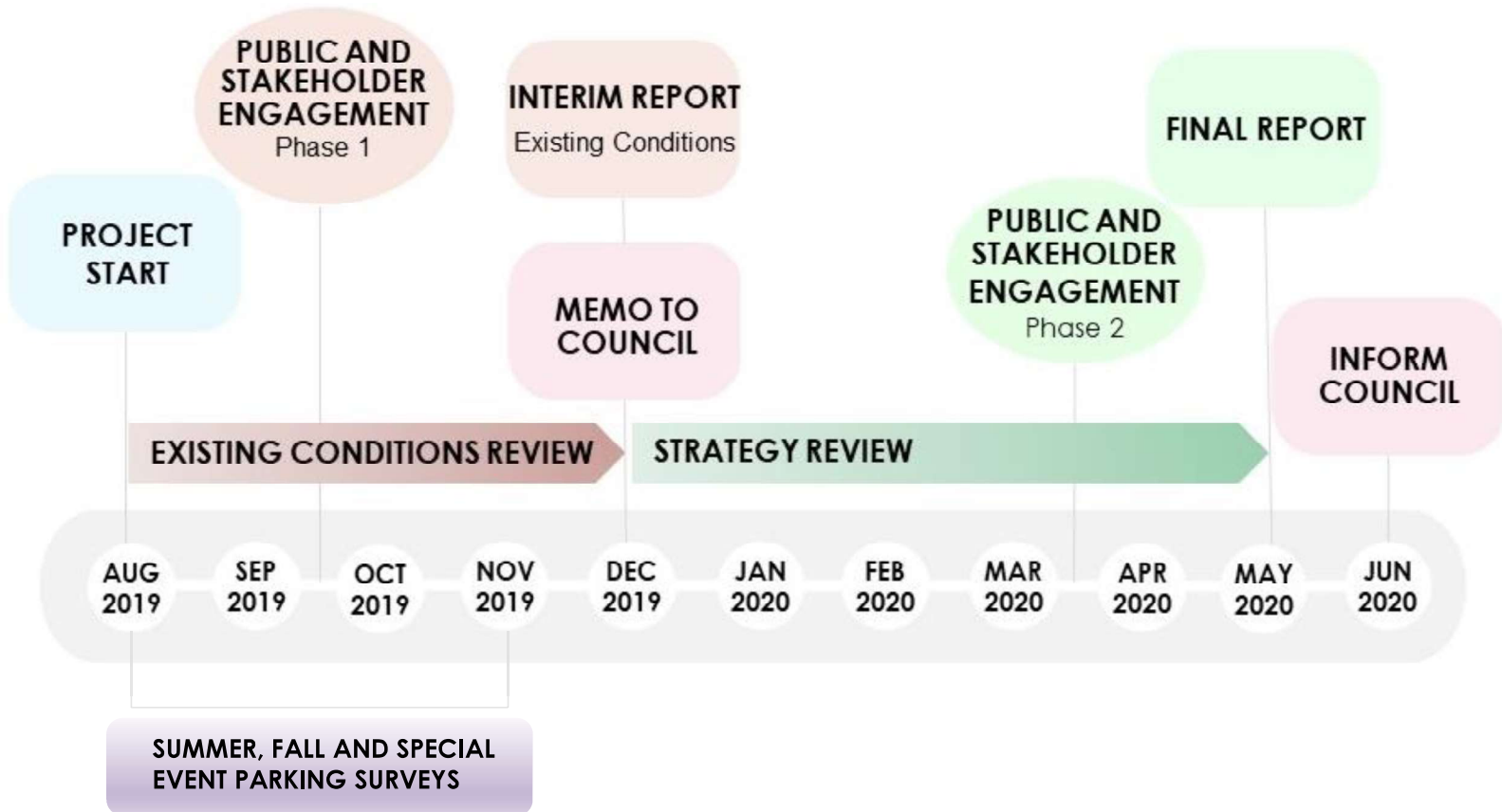


## Implementation Plan

Costs and funding strategy, phasing strategy and monitoring plan

## APPROACH

# STUDY FRAMEWORK





# STUDY OUTREACH



## Project Website

- Project Background and updates
- Opportunity to share feedback
- <http://vaughan.ca/KleinburgParking>

## Study Notices

- Notices for study commencement and parking data collection
- Available on project website

## Online Survey

- Collects input from the community about parking needs, issues, opportunities and desired outcomes in Kleinburg
- Open until end of October 2019
- <https://www.surveymonkey.com/r/KleinburgParking1>



## Public Information and Feedback Session

- September 26, 2019
- 5:00 PM to 8:00 PM
- Pierre Berton Heritage Centre, Kleinburg, ON



**OPEN DISCUSSION  
NEEDS, ISSUES AND OPPORTUNITIES**



# WHAT WE HAVE LEARNED SO FAR



Parking Usage /  
Parking Needs

**Illegal parking** both on-street and off-street (e.g. in no-parking zones along Kellam Street, in fire zones, in front of fire hydrants, in the kill strip etc.)

**Space designations** for residential / specific commercial uses within private lots not always followed

**Customers** park at the Public Library, Kleinburg Public School, Pierre Berton Heritage Centre and Doctor's House to walk to another establishment

**Visitors** to McMichael Art Gallery sometimes park at Bindertwine park and walk through the trails to the gallery



Parking / Traffic  
Interactions

Vehicles' **waiting or hesitating** to turn into a parking lot impacts through-traffic on Islington Avenue

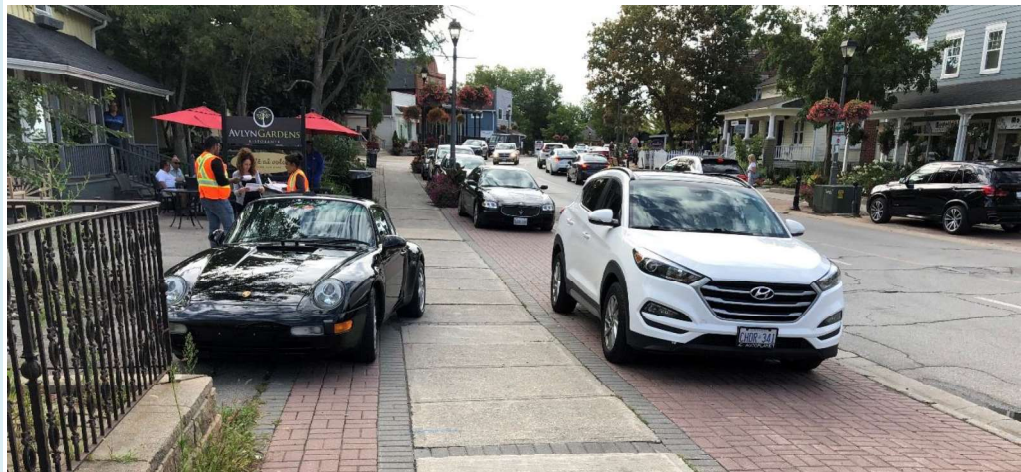
Vehicles **backing out** of parking spaces impact through-traffic on Islington Avenue



Signage / Wayfinding

Customers **unsure** whether parking is allowed along Islington Avenue

**Difficulty in seeing** parking restrictions at night along Kellam Street





# WHAT WE HAVE LEARNED SO FAR



## Traffic Operations and Issues



## Safety



## Pedestrians / Cyclists / Scooters

**High traffic volumes** and operations at the intersection of Islington Avenue and Stegman's Mill Road between approximately 4 PM – 6PM. Northbound queues can extend to Bindertwine Boulevard.

**Queues** along Stegman's Mill Road observed to extend to Napier Street

**Heavy vehicles** on Nashville Avenue and Stegman's Mill Road (especially due to Pine Valley detours)

**Trucks** make wide turns and impact crossing traffic along Islington Avenue

Vehicles parked on-street often **encroach** onto the pedestrian sidewalk

Enforcement is required to bring vehicles to a **complete stop** at intersection of Islington Avenue with Nashville Road



**Cyclists and scooters** ride both on the road and along sidewalk as there is no dedicated infrastructure for them

**Heavy pedestrian activity** around Islington Avenue and Kellam Street (Starbucks)

**Jay-walking** occurs, especially at intersection of Islington Avenue and Kellam Street (across from the busy Cookie Crumble Café)

**Cycling groups** meet in Kleinburg, particularly on weekends

**Casual cyclists** leave bicycles leaning against the Old Confectionary Hall

# SITE PHOTOS



McINTOSH PERRY

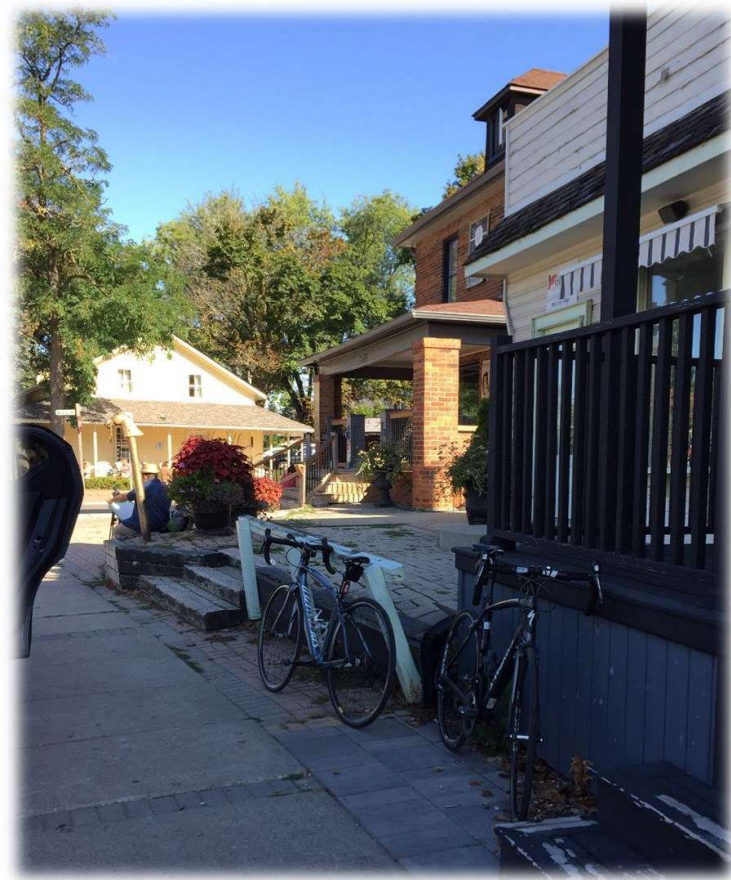


# SITE PHOTOS



McINTOSH PERRY

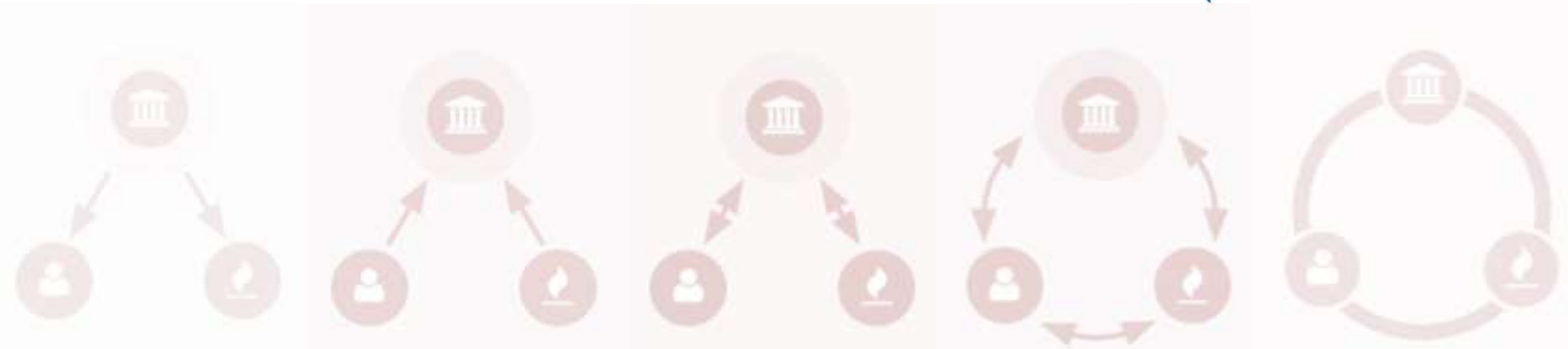
# SITE PHOTOS



McINTOSH PERRY



## NEXT STEPS



- **Complete** data collection
- **Undertake** data analysis
- **Prepare** interim report and memo to council
- **Develop** parking management strategy







# **PUBLIC INFORMATION AND FEEDBACK SESSION #1**





# WELCOME TO THE KLEINBURG PARKING STRATEGY REVIEW

## PUBLIC INFORMATION AND FEEDBACK SESSION #1

SEPTEMBER 26, 2019



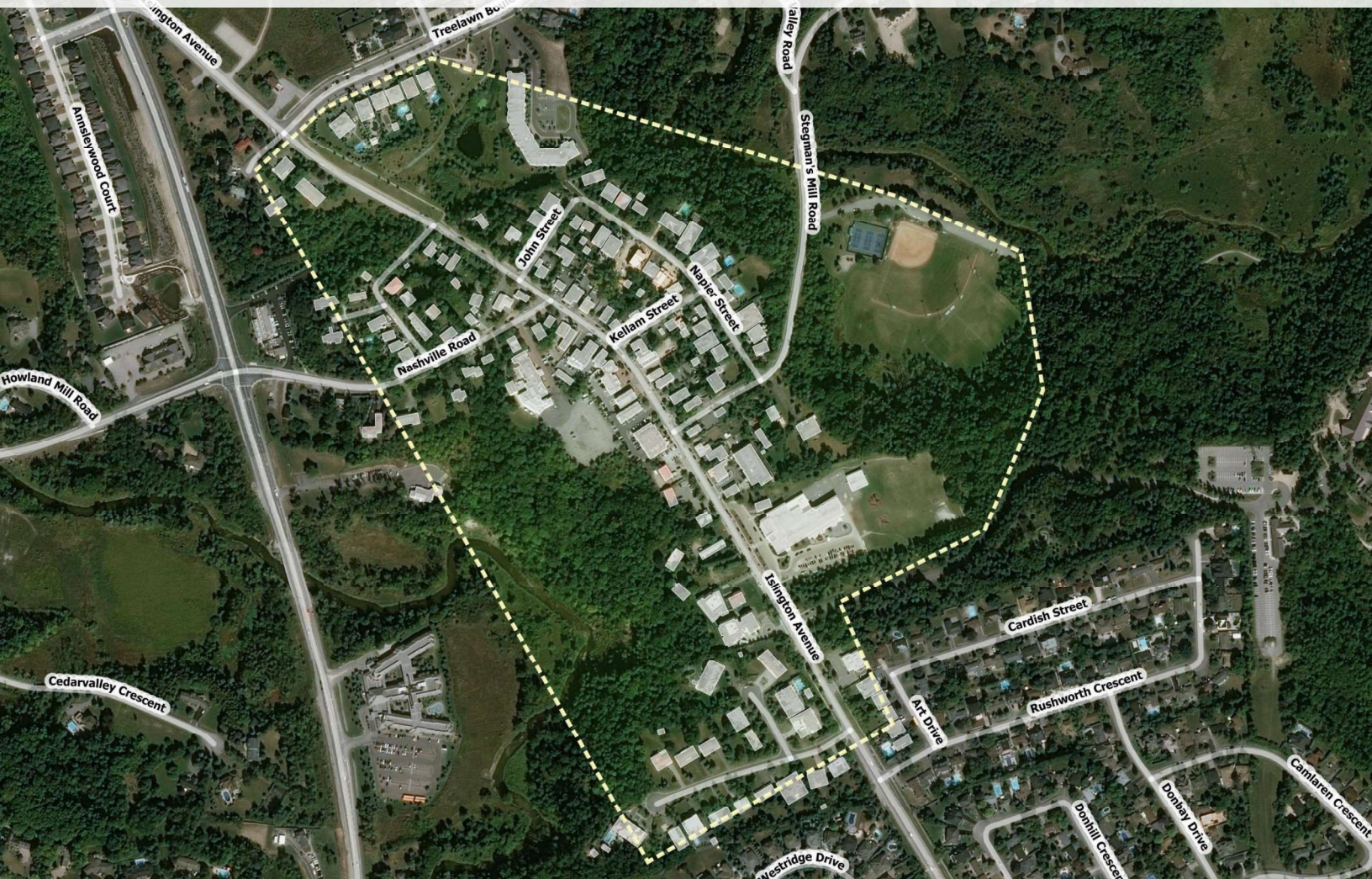
### **Purpose of this session:**

- **Introduce** the Kleinburg Parking Strategy Review
- **Inform** on the study intents and purposes, process, outcomes and work completed to date
- **Gather** input on existing conditions, and parking issues, needs and opportunities in the study area

**Please sign in. Project team members are here to answer questions.  
Please fill out a comment form before you leave.**



# KLEINBURG PARKING STRATEGY - STUDY AREA





# STUDY BACKGROUND

- Kleinburg is one of the **City of Vaughan's historic villages** with a charming residential community at its core, abundant natural assets and a rich and varied history.
- Islington Avenue, a **vibrant main street**, runs through the Village Core and is fronted by mixed use and retail/commercial land uses. Kleinburg's commercial attractions are set in historical buildings and provide a steady stream of activity.
- The 2011 Kleinburg Economic Development Strategy (KEDS) identified that **limited public parking** is a significant challenge for developments in Kleinburg.
- The Kleinburg Parking Strategy Review was initiated by the City of Vaughan in August 2019 to identify and assess alternatives for existing and future parking needs, recommend implementable parking management solutions and identify sustainable sources of funding or financing alternatives.





# STUDY SCOPE AND OBJECTIVES

Objective: Develop a comprehensive and forward-looking parking strategy to facilitate growth and accommodate immediate and long term parking demands in Kleinburg



**Assess** existing parking supply and demand profiles, and consider the transportation modes in Kleinburg



**Collect** input and address comments from the public and stakeholders during the study



**Develop** menu of solutions for comprehensive parking strategy by understanding and quantifying immediate and future parking needs (1-5 years, 5-10 years, 2041)

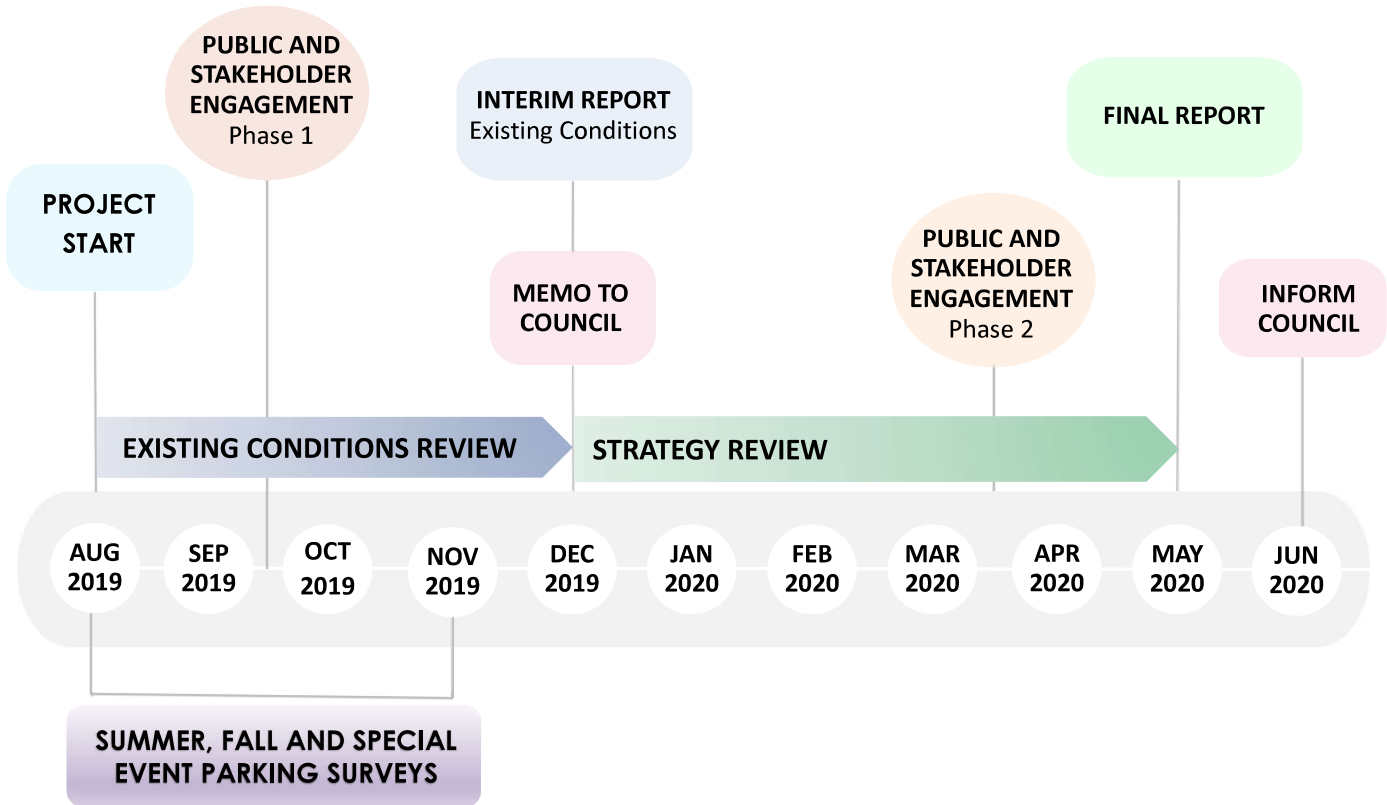


**Recommend** comprehensive parking policies and guidelines considering multi-modal and active transportation, transit, safety and complete streets planning and design principles



**Formulate** a Parking Management and Implementation Plan through review of costs and funding strategies, cash-in-lieu policies, phasing and monitoring strategies

# STUDY FRAMEWORK



# EXISTING PARKING SUPPLY

The Kleinburg study area provides over 720 non-residential parking spaces:

- Municipal on-street parking (129 spaces)
- 28 off-street parking lots (591 spaces in marked lots, 5 un-marked lots)



Parking Lot	Total Spaces (Accessible)	Parking Lot	Total Spaces (Accessible)
Lot #1	18 (1)	Lot #15	Un-marked
Lot #2	44 (2)	Lot #16	3
Lot #3	17 (1)	Lot #17	Un-marked
Lot #4	20 (1)	Lot #18	20
Lot #5	6	Lot #19	13
Lot #6	12 (1)	Lot #20	208 (2)
Lot #7	12	Lot #21	17 (2)
Lot #8	8 (1)	Lot #22	3
Lot #9	17 (1)	Lot #23	13 (1)
Lot #10	45 (3)	Lot #24	Un-marked
Lot #11	26 (1)	Lot #25	64 (1)
Lot #12	7 (1)	Lot #26	Un-marked
Lot #13	9	Lot #27	2
Lot #14	7	Lot #28	Un-marked
<b>On-Street</b>		<b>Total Spaces</b>	
Nashville Road (north side)		13	
Nashville Road (south side)		6	
Islington Avenue (East Side)		63	
Islington Avenue (West Side)		15	
Kellam Street		2	
Napier Street		30	



# EXISTING PARKING DEMANDS

- 12-hour partial license plate surveys have been completed to observe parking occupancy, turnover and duration of stay in the study area during a summer weekday and weekend:
  - Thursday, August 22, 2019 from 9:00 AM to 9:00 PM
  - Saturday, August 24, 2019 from 9:00 AM to 9:00 PM
- Similar parking surveys will be undertaken in mid-October and November, 2019.

Preliminary review of area-wide **Parking Occupancy** (percentage of occupied parking spaces at any given time during the day) show:

- ❖ Reserve capacity in the existing on-street and off-street parking infrastructure, during both weekday and weekend
- ❖ Higher percentages of on-street parking spaces occupied throughout the day, than off-street parking spaces
- ❖ Weekend evening see the highest percentages of on-street and off-street parking spaces occupied

Thursday (Aug 22, 2019)



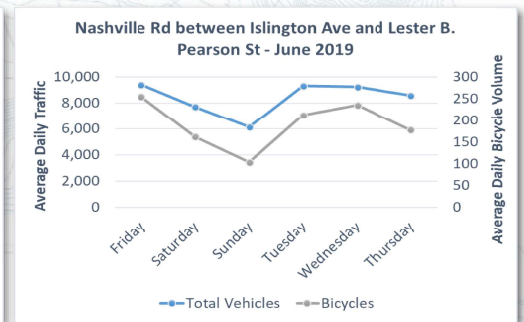
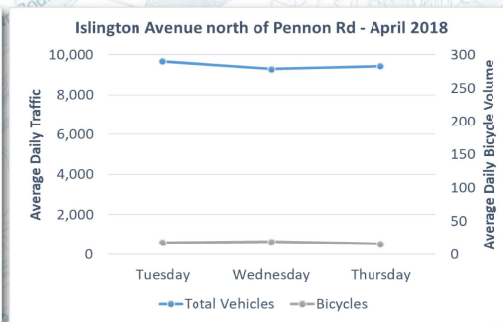
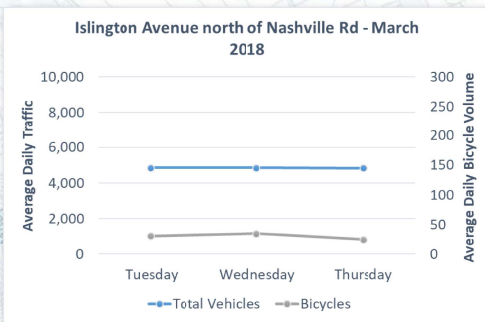
Saturday (Aug 24, 2019)



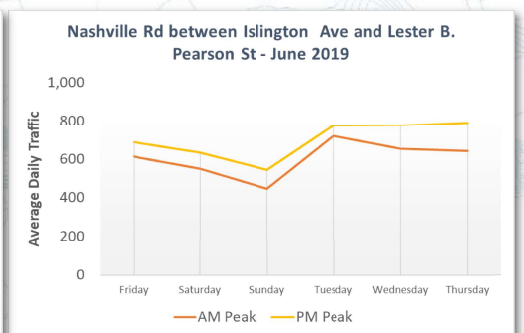
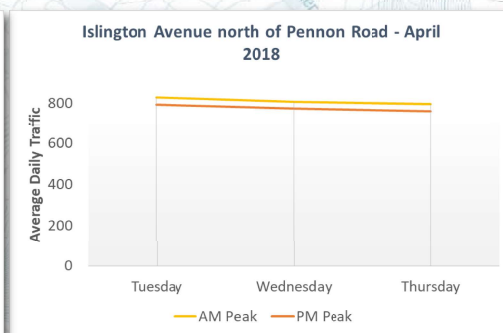
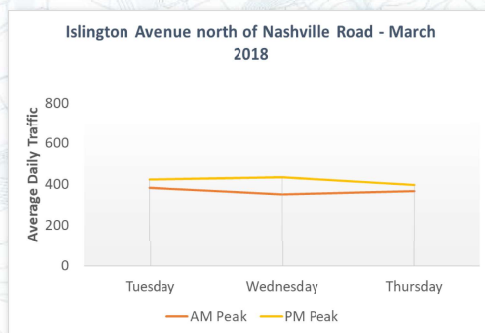
# EXISTING TRAFFIC CONDITIONS

Islington Avenue and Nashville Road within the study area are collector roads connecting to regional arterials and local streets.

## Daily Traffic and Bicycle Volumes



## Peak Hour Traffic and Bicycle Volumes





# SAFETY REVIEW

- Within the study area, 2 Property Damage Only (PDO) collisions have been reported at the intersection of Islington Avenue and Nashville Road between 2014 and 2017.



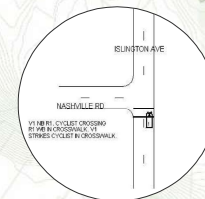
- Total daily traffic along Islington Avenue between Nashville Road and Lester B. Pearson Street is composed of up to 2.3% of cyclists, 17.0% of heavy vehicles (2 axles or more), and 74.9% of cars and trailers.
- Average speeds are reported to be 47 – 49 km/h on Islington Avenue and 41 km/h on Nashville Road. 5% of reported speeds on Islington Avenue exceed 62 km/h. Both roads have a posted speed limit of 40 km/h.

## Rear-end collision in 2014



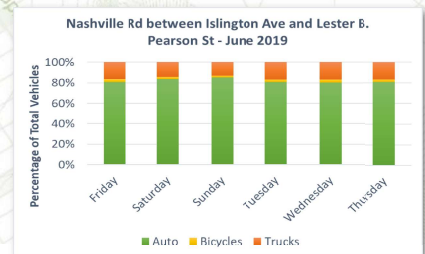
- Auto and pick-up truck involved
- Driver following too close
- Dark (5:50 PM), loose snow

## Turning movement collision in 2015



- Auto and bicycle involved
- Driver inattentive, failed to yield while turning left
- Daylight (3:25 PM), dry conditions

## Traffic Composition





# WHAT WE HAVE OBSERVED



## Parking Usage / Parking Needs

**Illegal parking** both on-street and off-street (e.g. in no-parking zones along Kellam Street, in fire zones, in front of fire hydrants, in the kill strip etc.)

**Space designations** for residential / specific commercial uses within private lots not always followed

**Customers** park at the Public Library, Kleinburg Public School, Pierre Berton Heritage Centre and Doctor's House to walk to another establishment

**Visitors** to McMichael Art Gallery sometimes park at Bindertwine park and walk through the trails to the gallery



## Parking / Traffic Interactions

Vehicles **waiting or hesitating** to turn into a parking lot impacts through-traffic on Islington Avenue

Vehicles **backing out** of parking spaces impact through-traffic on Islington Avenue



## Signage / Wayfinding

Customers **unsure** whether parking is allowed along Islington Avenue

**Difficulty in seeing** parking restrictions at night along Kellam Street



# WHAT WE HAVE OBSERVED



## Traffic Operations and Issues

**High traffic volumes** and operations at the intersection of Islington Avenue and Stegman's Mill Road between approximately 4 PM – 6PM. Northbound queues can extend to Bindertwine Boulevard.

**Queues** along Stegman's Mill Road observed to extend to Napier Street

**Heavy vehicles** on Nashville Avenue and Stegman's Mill Road (especially due to Pine Valley detours)

**Trucks** make wide turns and impact crossing traffic along Islington Avenue



## Safety

Vehicles parked on-street often **encroach** onto the pedestrian sidewalk

Enforcement is required to bring vehicles to a **complete stop** at intersection of Islington Avenue with Nashville Road



## Pedestrians / Cyclists / Scooters

**Cyclists and scooters** ride both on the road and along sidewalk as there is no dedicated infrastructure for them

**Heavy pedestrian activity** around Islington Avenue and Kellam Street (Starbucks)

**Jay-walking** occurs, especially at intersection of Islington Avenue and Kellam Street (across from the busy Cookie Crumble Café)

**Cycling groups** meet in Kleinburg, particularly on weekends

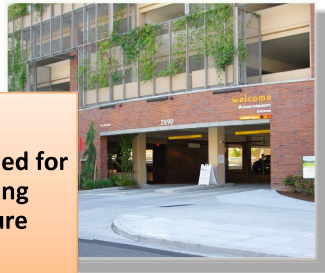
**Casual cyclists** leave bicycles leaning against the Old Confectionery Hall

# POTENTIAL OPTIONS

Manage existing on-street/off-street, public/private parking infrastructure



Review need for a parking structure



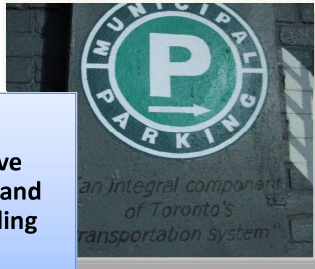
Consider bicycle parking



Improve access to Kleinburg through other modes of travel



Improve signage and wayfinding



Please head over to Interactive Table # 2 to discuss these and other potential options for Kleinburg, and provide your thoughts, ideas and priorities to the project team.



# PARKING NEEDS CONSULTATION

Help identify parking issues, needs, and opportunities by:

- Participating at **interactive tables** during this Public Information and Feedback Session
- Filling out a **comment form**
- Completing the **Online Survey # 1** at:  
<https://www.surveymonkey.com/r/KleinburgParking1>



- This is one of two online surveys for the study
- Online Survey # 1 requests the community to provide feedback about existing conditions and parking issues in Kleinburg
- This survey will be open until mid-October 2019 and takes about 15 minutes of your time to complete

- Participating in the upcoming **pedestrian intercept survey** in Kleinburg (Sep – Oct 2019)
- Visiting the **project website** to review study updates and provide feedback: <http://vaughan.ca/Kleinburgparking>



## NEXT STEPS AND STUDY CONTACT

- Following this Public Information and Feedback Session, the project team will:

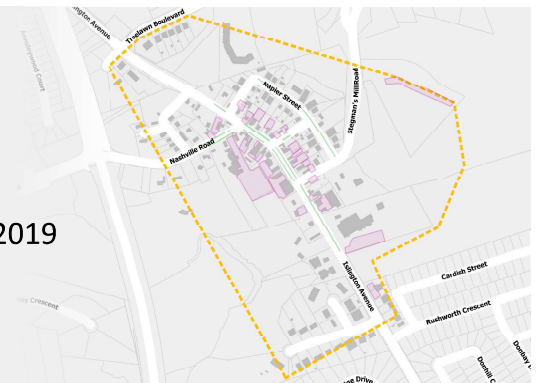
### **Complete** data collection and analysis

- Fall parking surveys: Thursday, October 24 and Saturday, October 26, 2019
- Special event parking survey: November 2019

### **Collect** Online Survey #1 responses from September to October 2019

### **Project** future parking demands

### **Develop** and **evaluate** parking management strategies



- Please provide your contact information on the sign-in sheet for study updates or check the project website.
- Please talk with project team members during this Public Information and Feedback Session or direct any comments or questions to:

**Samar Saadi Nejad, P.Eng.**  
Manager, Development Transportation Engineering  
City of Vaughan  
905-832-2281, ext. 8253  
[samar.saadinejad@vaughan.ca](mailto:samar.saadinejad@vaughan.ca)

**Mehemed Delibasic, P.Eng.**  
Consultant Project Manager  
McIntosh Perry Consulting Engineers Ltd.  
289-319-3112  
[m.delibasic@mcintoshperry.com](mailto:m.delibasic@mcintoshperry.com)

# WHAT ARE THE ISSUES

Observations	<b>Scale of Issue</b> Red - Constant issue Yellow - Sometimes an issue Green - Not an issue	<b>Priority</b> Red - High priority Yellow - Medium priority Green - Low priority
<b>Parking Usage/Needs</b> <ul style="list-style-type: none"> <li>• Illegal parking on and off-street</li> <li>• Space designations not followed</li> <li>• Parking at library, school &amp; other establishments with larger parking lots</li> <li>• Long duration parking and slow turnover rates</li> </ul>		
<b>Parking/Traffic Interactions</b> <ul style="list-style-type: none"> <li>• Slow downs on Islington Avenue due to vehicles waiting or looking to park or backing out of spaces</li> </ul>		
<b>Signage / Wayfinding</b> <ul style="list-style-type: none"> <li>• Customers unsure if parking is permitted along Islington Avenue</li> <li>• Difficulty seeing parking signage at night (e.g., Kellam Street)</li> </ul>		



# WHAT ARE THE ISSUES



Observations	Scale of Issue	Priority
<b>Traffic Operations/Issues</b> <ul style="list-style-type: none"> <li>• High traffic volumes</li> <li>• Queues along Stegman's Mill Road</li> <li>• Heavy vehicles present</li> </ul>	<ul style="list-style-type: none"> <li>Red - Constant issue</li> <li>Yellow - Sometimes an issue</li> <li>Green - Not an issue</li> </ul>	<ul style="list-style-type: none"> <li>Red - High priority</li> <li>Yellow - Medium priority</li> <li>Green - Low priority</li> </ul>
<b>Safety</b> <ul style="list-style-type: none"> <li>• Pedestrian sidewalk and on-street parked vehicle</li> <li>• Not complete stops</li> </ul>		
<b>Pedestrians/Cyclists/Scooters</b> <ul style="list-style-type: none"> <li>• Jaywalking</li> <li>• Cycling groups or casual</li> <li>• Scooters on roads and sidewalks</li> <li>• Pedestrians around Starbucks</li> </ul>		

# WHAT ARE THE OPTIONS



Potential Options	<b>Priority</b> Red - High priority Yellow - Medium priority Green - Low priority	<b>Your Ideas</b> Could these options work in Kleinburg? Are there other options? (use post-it notes)
<b>Consolidate public parking areas</b> (e.g., fewer lots with more spaces, shared-use lots, parking garage)		
<b>Apply time restrictions on parking</b>		
<b>Provide paid parking</b>		

# WHAT ARE THE OPTIONS



Potential Options	<b>Priority</b> Red - High priority Yellow - Medium priority Green - Low priority	<b>Your Ideas</b> Could these options work in Kleinburg? Are there other options? (use post-it notes)
<b>Improve signage</b> that highlights parking areas/spaces		
<b>Create connected network</b> for walking, cycling plus 2 other modes of travel (help identify these other 2 modes of travel)		
<b>Provide infrastructure to benefit vulnerable users equitably</b> (e.g. bike parking, sidewalk without boulevard parking)		



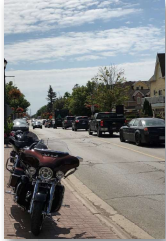
# LOCATE THE ISSUES



**Where are problem areas for traffic moving?**



**Where do you typically park?**



**Where are issues for parking?**

- Are there enough parking spaces?
- Issues related to time of day or seasons ?



**Are there key locations for possible options to address the issue?**

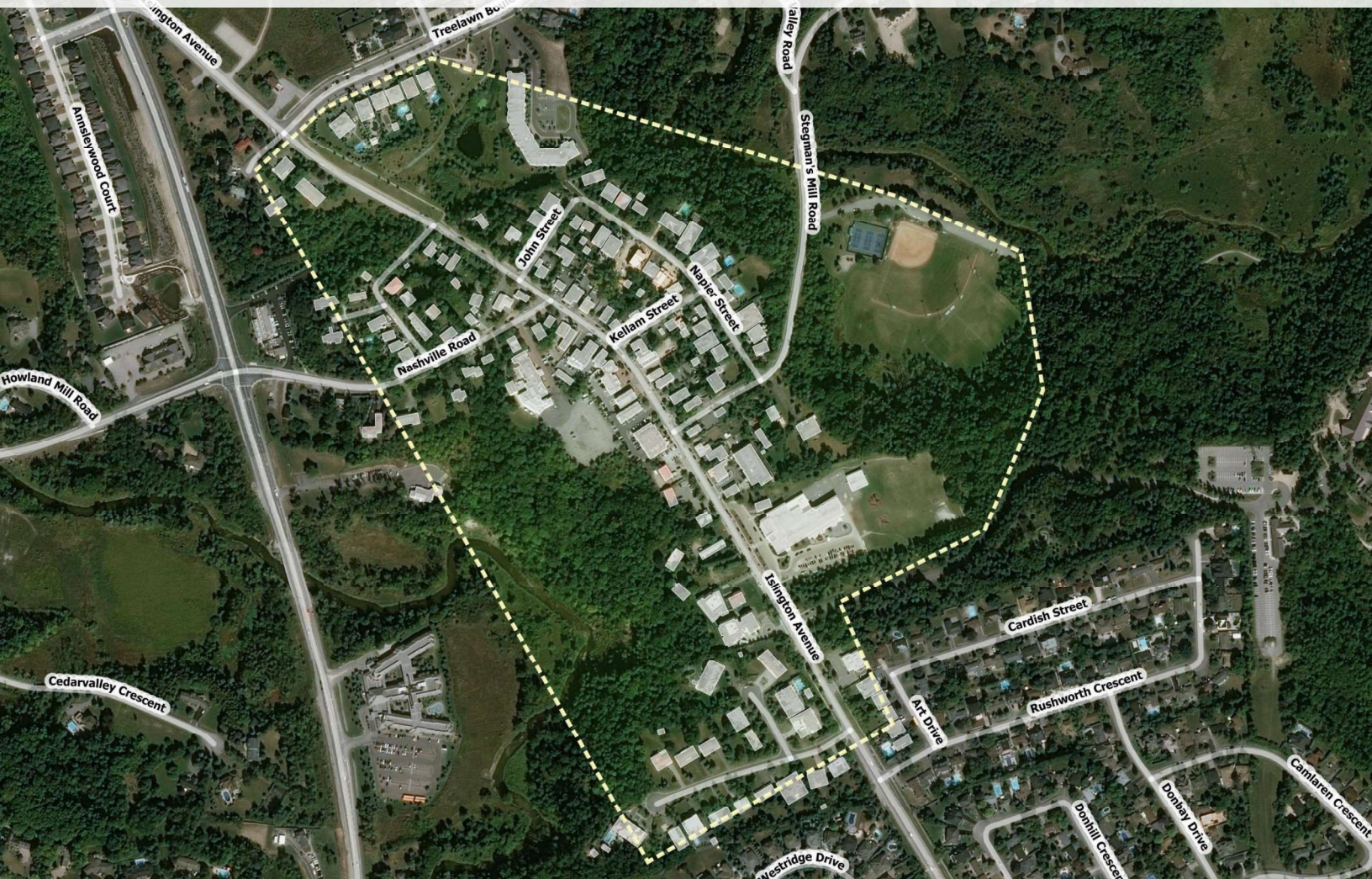
- If so, what could be an option and where?

Use dots to mark on the **Study Area map** key parking problem areas

Use post-it notes to add description



# KLEINBURG PARKING STRATEGY - STUDY AREA





## ONLINE SURVEY #1 QUESTIONS





Working to accommodate immediate and long-term parking needs in Kleinburg

## **Section 1 Introduction**

### **PROJECT OBJECTIVES**

**The Kleinburg Parking Strategy review will explore opportunities to accommodate immediate and long-term needs for parking through a comprehensive, forward-looking strategy. The community is invited to provide input to the study by participating in online surveys and public meetings.**

### **ONLINE SURVEYS**

**During the course of this project two online surveys will be prepared for the public to participate in. The first survey will collect input on current parking needs, issues, opportunities and desired outcomes from the study. This survey will remain online to the end of October 2019 and should take about 15 minutes to complete.**

**The second online survey will be available in March 2020 and will focus on participant input on short- and long-term remedies for parking challenges. The second survey will be posted to the City of Vaughan's project website ([vaughan.ca/Kleinburgparking](http://vaughan.ca/Kleinburgparking)).**

### **INFORMATION AND FEEDBACK SESSIONS**

**This will be another opportunity to learn about the project and provide input on the existing parking situation in Kleinburg. The first drop-in session will take place on Thursday, September 26<sup>th</sup> from 5 p.m. to 8 p.m. at Pierre Berton Heritage Centre, located at 10418 Islington Avenue in Kleinburg.**

**The second session will take place in March 2020. Visit the project website for details as they become available.**

### **NOTICE OF COLLECTION**

***No personal information is collected through this online survey. The information gathered is only used in determining parking needs and for statistical purposes. If you have any questions about the collection and use of this information please***

***contact The Corporation of the City of Vaughan Access and Privacy Office, Office of the City Clerk, 2141 Major Mackenzie Drive, Maple, ON L6A 1T1, or 905-832-2281 ext. 8988.***



Working to accommodate immediate and long-term parking needs in Kleinburg

**Section 2 Information related to your most recent trip**

1. When was the last time you visited Kleinburg?

- Weekday  Weekend

2. What part of the day was that trip?

- Morning (before 11 a.m.)  Afternoon (2 p.m. to 5 p.m.)  
 Noon (11 a.m. to 2 p.m.)  Evening (after 5 p.m.)

3. What was the purpose of your trip? (select all that apply)

- |   |   |
|---|---|
| <input type="checkbox"/> Shop   | <input type="checkbox"/> Medical appointment                                |
| <input type="checkbox"/> Work   | <input type="checkbox"/> Personal service (banking, hairdresser, spa, etc.) |
| <input type="checkbox"/> Recreation                                     | <input type="checkbox"/> Special event (wedding, community meeting, etc.)   |
| <input type="checkbox"/> Residence                                      | <input type="checkbox"/> Visit a resident                                   |
| <input type="checkbox"/> Business meeting                               | <input type="checkbox"/> Meeting point (bike/running club, etc.)            |
| <input type="checkbox"/> Tourism (museum, art gallery, etc.)            | <input type="checkbox"/> Pick-up/Drop-off at school/daycare                 |
| <input type="checkbox"/> Dining   | <input type="checkbox"/> Visit the library                                  |
| <input type="checkbox"/> Other primary purpose of trip (please specify) |   |



4. Where were you coming from?

- |   |  |
|---|--|
| <input type="radio"/> Kleinburg                   | <input type="radio"/> Whitchurch-Stouffville |
| <input type="radio"/> Vaughan (but not Kleinburg) | <input type="radio"/> Markham                |
| <input type="radio"/> Newmarket                   | <input type="radio"/> King                   |
| <input type="radio"/> Aurora                      | <input type="radio"/> Toronto                |
| <input type="radio"/> Thornhill                   | <input type="radio"/> Mississauga            |
| <input type="radio"/> Georgina                    | <input type="radio"/> Brampton               |
| <input type="radio"/> Richmond Hill               | <input type="radio"/> Scarborough            |
| <input type="radio"/> East Gwillimbury            |  |

If not listed please specify here:

5. How many places did you visit during your trip to Kleinburg?

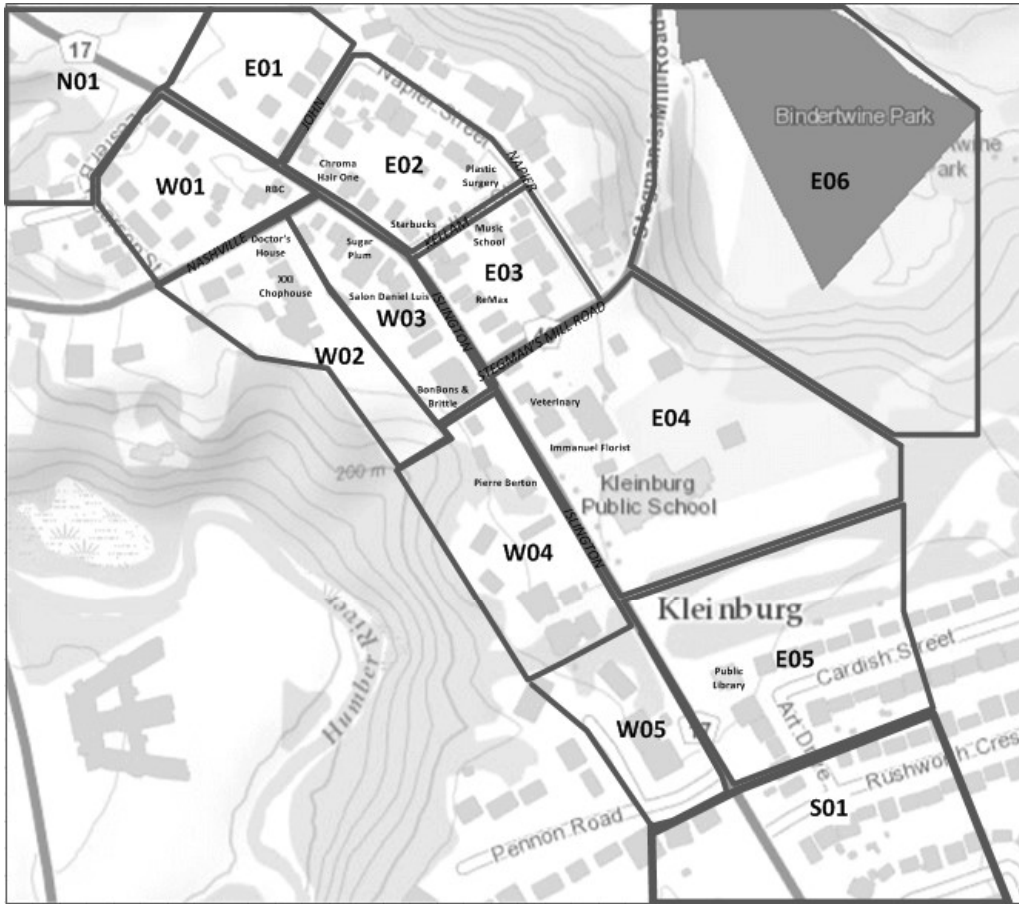
- |   |                                 |
|---|---------------------------------|
| <input type="radio"/> None (meeting point only) | <input type="radio"/> 4         |
| <input type="radio"/> 1                         | <input type="radio"/> 5         |
| <input type="radio"/> 2                         | <input type="radio"/> 6 or more |
| <input type="radio"/> 3                         |                                 |

6. Using the map below, find the block where your first destination was located, then select the block from the drop-down list.

(please click on the drop-down arrows to select from the list)

Destination is in block:

[Please find the block where your primary or first destination was and then select that block from the drop-down list above.]



7. How long did you stay in the area?

(Please click on the drop-down arrows and select from the list).

8. How often do you visit Kleinburg for non-work purposes?

- |                                      |  |
|--------------------------------------|--|
| <input type="radio"/> Not very often | <input type="radio"/> 3 times a week           |
| <input type="radio"/> Once a week    | <input type="radio"/> More than 3 times a week |
| <input type="radio"/> Twice a week   |  |



Working to accommodate immediate and long-term parking needs in Kleinburg

**Section 3 Information related to mode of travel**

9. How did you travel to Kleinburg?

- Car
- Pick up / drop off / carpool
- Walk
- Taxi/Rideshare
- Combination (please specify)
- Transit
- Bicycle
- Motorcycle
- Truck





Working to accommodate immediate and long-term parking needs in Kleinburg

### Section 4 Information related to finding a parking space

10. In which type of space did you park?

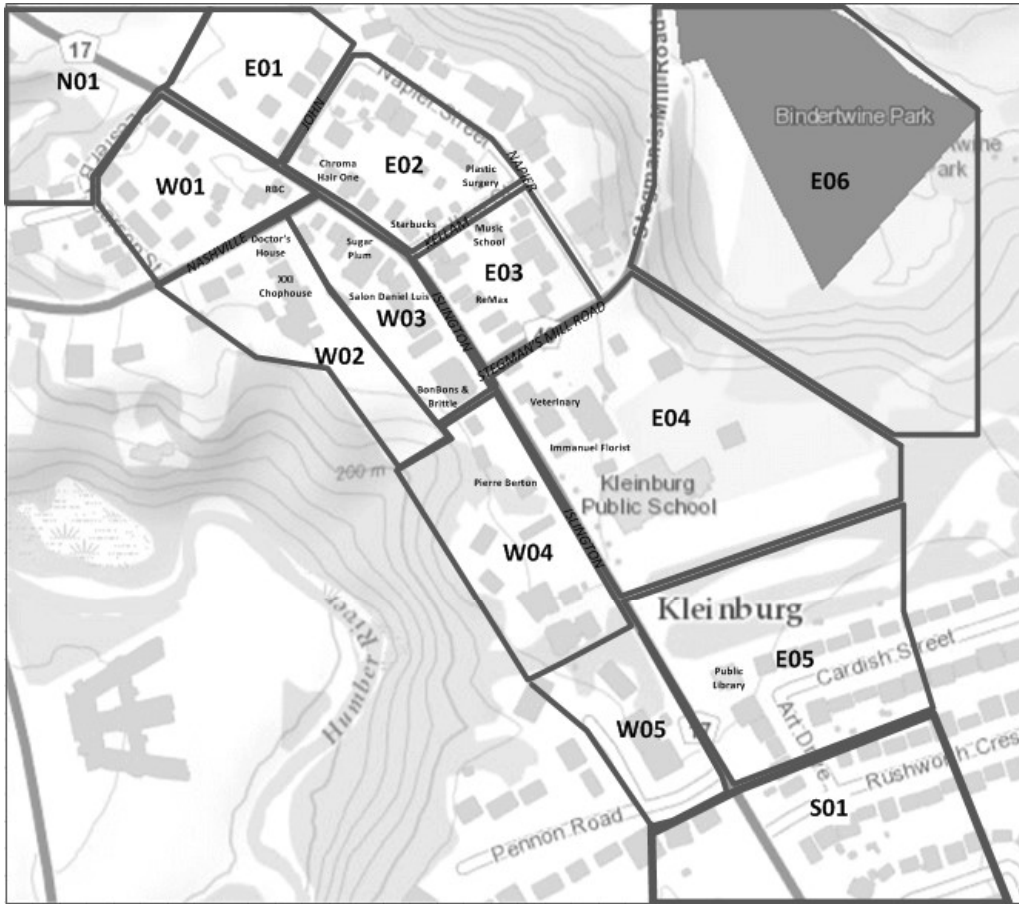
- |  |  |
|--|--|
| <input type="radio"/> On-street space along Islington Avenue | <input type="radio"/> Privately owned, reserved space    |
| <input type="radio"/> On-street space along a side street    | <input type="radio"/> Privately owned, customer only lot |
| <input type="radio"/> Kleinburg Public School parking lot    | <input type="radio"/> Not applicable (did not drive)     |
| <input type="radio"/> Kleinburg Public Library parking lot   |  |
| <input type="radio"/> Other (please specify)                 |  |

11. If you drove or were driven **where** did you park?

Find the block on the map below and select it from the drop-down list:

Parked or were dropped off on block:

Find the block where you parked or were dropped off and select block from the list box above.



12. Estimate how long it took to find parking.

- |   |   |
|---|---|
| <input type="radio"/> Less than 5 minutes | <input type="radio"/> More than 15 minutes        |
| <input type="radio"/> 6 to 10 minutes     | <input type="radio"/> Not applicable on this trip |
| <input type="radio"/> 11 to 15 minutes    |   |



Working to accommodate immediate and long-term parking needs in Kleinburg

**Section 5 Feedback related to current parking supply and demand**

13. How do you feel about the availability of parking spaces in Kleinburg?

	Plentiful, never a problem	About right	Sometimes a problem	Often difficult	Critical shortage	Not applicable to my trip
Looking for <b>ON-STREET</b> space	<input type="radio"/>	<input type="radio"/>	<input type="radio"/>	<input type="radio"/>	<input type="radio"/>	<input type="radio"/>

If your rating is "Often difficult" or "Critical shortage", please describe where you find this to be the case.

Looking for <b>OFF-STREET</b> space (including customer only lots)	<input type="radio"/>	<input type="radio"/>	<input type="radio"/>	<input type="radio"/>	<input type="radio"/>	<input type="radio"/>
--	-----------------------	-----------------------	-----------------------	-----------------------	-----------------------	-----------------------

If your rating is "Often difficult" or "Critical shortage", please describe where you find this to be the case.





Working to accommodate immediate and long-term parking needs in Kleinburg

**Section 6 Feedback related to current parking services**

14. How would you rate public off-street parking in terms of the following?

	Excellent	Good	Adequate	Poor	Unacceptable	No opinion
Physical condition	<input type="radio"/>	<input type="radio"/>	<input type="radio"/>	<input type="radio"/>	<input type="radio"/>	<input type="radio"/>
Lighting and visibility	<input type="radio"/>	<input type="radio"/>	<input type="radio"/>	<input type="radio"/>	<input type="radio"/>	<input type="radio"/>
Signs directing drivers to the public parking	<input type="radio"/>	<input type="radio"/>	<input type="radio"/>	<input type="radio"/>	<input type="radio"/>	<input type="radio"/>
Signs for parking restrictions/time limits	<input type="radio"/>	<input type="radio"/>	<input type="radio"/>	<input type="radio"/>	<input type="radio"/>	<input type="radio"/>
Pedestrian walkways from the parking lots to streets and businesses.	<input type="radio"/>	<input type="radio"/>	<input type="radio"/>	<input type="radio"/>	<input type="radio"/>	<input type="radio"/>

You can expand on your ratings here:



Working to accommodate immediate and long-term parking needs in Kleinburg

**Section 7 Feedback related to parking enforcement**

15. Are the **time limits** on the use of the parking spaces adequate?

	Never been a problem	Time restriction is about right	Sometimes a problem	Not enough time	Not applicable (did not drive, or no time limit)
On-street space	<input type="radio"/>	<input type="radio"/>	<input type="radio"/>	<input type="radio"/>	<input type="radio"/>
Off-street lots	<input type="radio"/>	<input type="radio"/>	<input type="radio"/>	<input type="radio"/>	<input type="radio"/>

16. Have you received a parking violation ticket in the last four (4) months while visiting Kleinburg?

- Yes  No

If yes, what was the reason for the ticket?

17. What is your opinion about the level of parking enforcement in Kleinburg?

- No opinion  Not enough  
 Never a problem  Aggressive  
 Adequate - firm but fair  Very aggressive

Other (please specify)



Working to accommodate immediate and long-term parking needs in Kleinburg

**Section 8 Feedback related to accessible or special needs parking**

18. Please assess the current condition of accessible parking.

	Excellent	Good	Adequate	Poor	Totally unacceptable	No opinion
The <b>signage</b> for on-street accessible spaces.	<input type="radio"/>	<input type="radio"/>	<input type="radio"/>	<input type="radio"/>	<input type="radio"/>	<input type="radio"/>
The <b>signage</b> for off-street accessible spaces.	<input type="radio"/>	<input type="radio"/>	<input type="radio"/>	<input type="radio"/>	<input type="radio"/>	<input type="radio"/>
The <b>number</b> of on-street accessible spaces.	<input type="radio"/>	<input type="radio"/>	<input type="radio"/>	<input type="radio"/>	<input type="radio"/>	<input type="radio"/>
The <b>number</b> of off-street accessible spaces.	<input type="radio"/>	<input type="radio"/>	<input type="radio"/>	<input type="radio"/>	<input type="radio"/>	<input type="radio"/>
The <b>location</b> of the on-street accessible spaces.	<input type="radio"/>	<input type="radio"/>	<input type="radio"/>	<input type="radio"/>	<input type="radio"/>	<input type="radio"/>
The <b>location</b> of the off-street accessible spaces.	<input type="radio"/>	<input type="radio"/>	<input type="radio"/>	<input type="radio"/>	<input type="radio"/>	<input type="radio"/>

You can expand on your ratings here:





Working to accommodate immediate and long-term parking needs in Kleinburg

**Section 9 Feedback on any other specific parking issues**

19. Are there any other specific issue(s) to consider in this parking strategy study?



Working to accommodate immediate and long-term parking needs in Kleinburg

**Section 10 Feedback on anything related to parking or mobility in general**

20. Do you have any additional comments on the state of parking and mobility in Kleinburg?

**Thank you very much for completing this survey.**

The online survey results will be published on [Kleinburg Parking Strategy website](#) when they become available.



# PEDESTRIAN INTERCEPT SURVEY QUESTIONS



Date:

Time:

Location:

**Pedestrian Intercept Survey Script and Form**

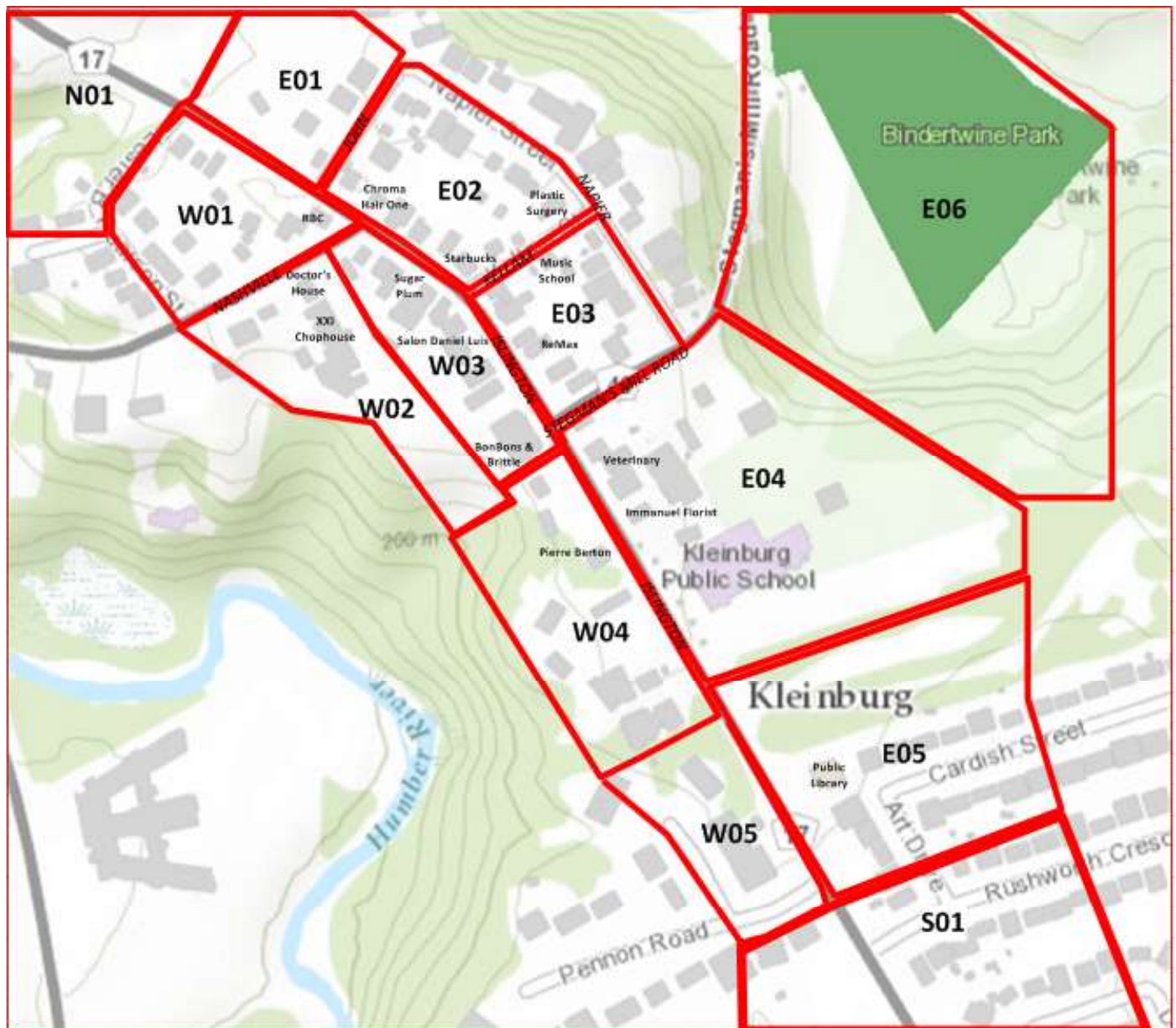
The City of Vaughan is carrying out a parking strategy study for Kleinburg. Can you please provide us with information related to your trip here today as it will be very valuable for the study? It will only take 5 minutes of your time. Great!

If you cannot do this now - no problem - can I ask you to go the City of Vaughan's projects website and fill out the Online Survey, there? Thanks so much. *(interviewer to hand Study Card to pedestrian)*

1. How did you travel to Kleinburg today? *(If the answer is everything other than car, bike, and truck or did not involve parking, then MP to skip to the last question at the end of the survey)*
2. If you drove, were driven, or rode your bike, how long did it take to find parking? *(e.g. <= 5 min, 6 to 10 min, 11 to 15 min, more than 15 min)*
3. Where did you park? Did you park in an on-street parking space or in a parking lot? *(MP to SHOW the respondent 8.5" x 11" MAP and ask them to point to the location of their parked **vehicle or bike**, then write down the BLOCK ID)*
4. Please also show me where your first destination point is located *(MP to refer to the same MAP and enter BLOCK ID)*
5. Where were you coming from? *(e.g. Vaughan, Thornhill, etc.)*
6. What is the purpose of your trip today? *(e.g. shopping, pickup-drop off, medical appointment, etc.)*
7. How many establishments in Kleinburg have you visited today or intend to visit? *(MP to write in– e.g. 1, 2, 3)*
8. How long do you plan to stay in the area? *(e.g. 15 min, 30 min, couple of hours, all day etc.)*
9. **Let me ask you a few general questions now** – How often do you visit Kleinburg for non-work purposes? *(e.g. once a week, not often, 3 times a week)*
10. On a scale of 1 to 5, where 1 represents NO PROBLEMS and 5 represents VERY DIFFICULT how easy is it to find on-street or off-street parking in Kleinburg? *(Mid-ratings: 2 – about right, 3 – sometimes a problem, 4 – often difficult)*
11. Do you have any additional comments or suggestions on the state of parking and mobility in Kleinburg?  
*(Prompts: On-street and Off-street; Enforcement; Signage; try to get them to evaluate ACCESSIBLE parking spaces, any parking restrictions or time limits, conditions of the parking lots etc.; use reverse side of the page for writing)*

### NOTICE OF COLLECTION

Information obtained during this assessment period is collected under the authority of the Municipal Act, 2001 and will be used for the purpose of assessing the current parking conditions in the Kleinburg Village core. Questions about this collection can be directed to Samar Saadi Nejad, manager, Development Transportation Engineering, Development Engineering department, at [samar.saadinejad@vaughan.ca](mailto:samar.saadinejad@vaughan.ca) or 905-832-2281, ext. 8253.





## **MEETING WITH KBIA PARKING TASK FORCE**



# **KLEINBURG PARKING STRATEGY REVIEW**

**MEETING WITH KBIA PARKING TASK FORCE**

City of Vaughan  
October 2, 2019



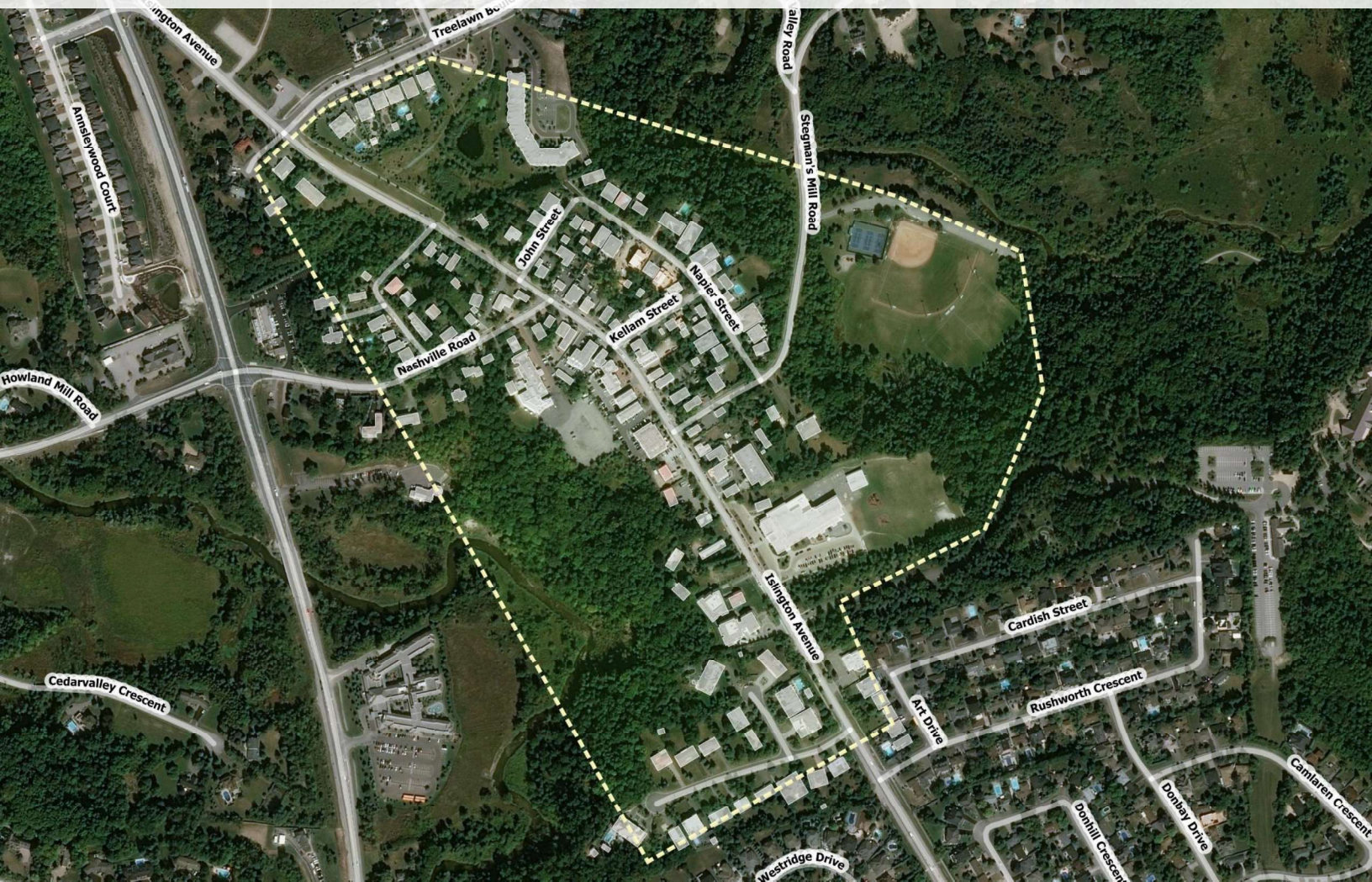
## OUTLINE

- Introductions
- Meeting Objectives
- Study Background
- Study Objective and Approach
- Study Framework
- Study Outreach
- Discussion: Needs, Issues and Opportunities





# KLEINBURG PARKING STRATEGY - STUDY AREA

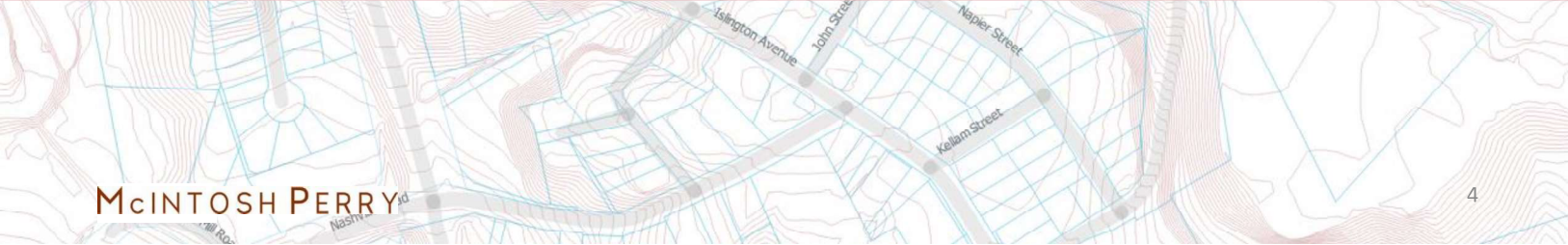




# MEETING OBJECTIVES



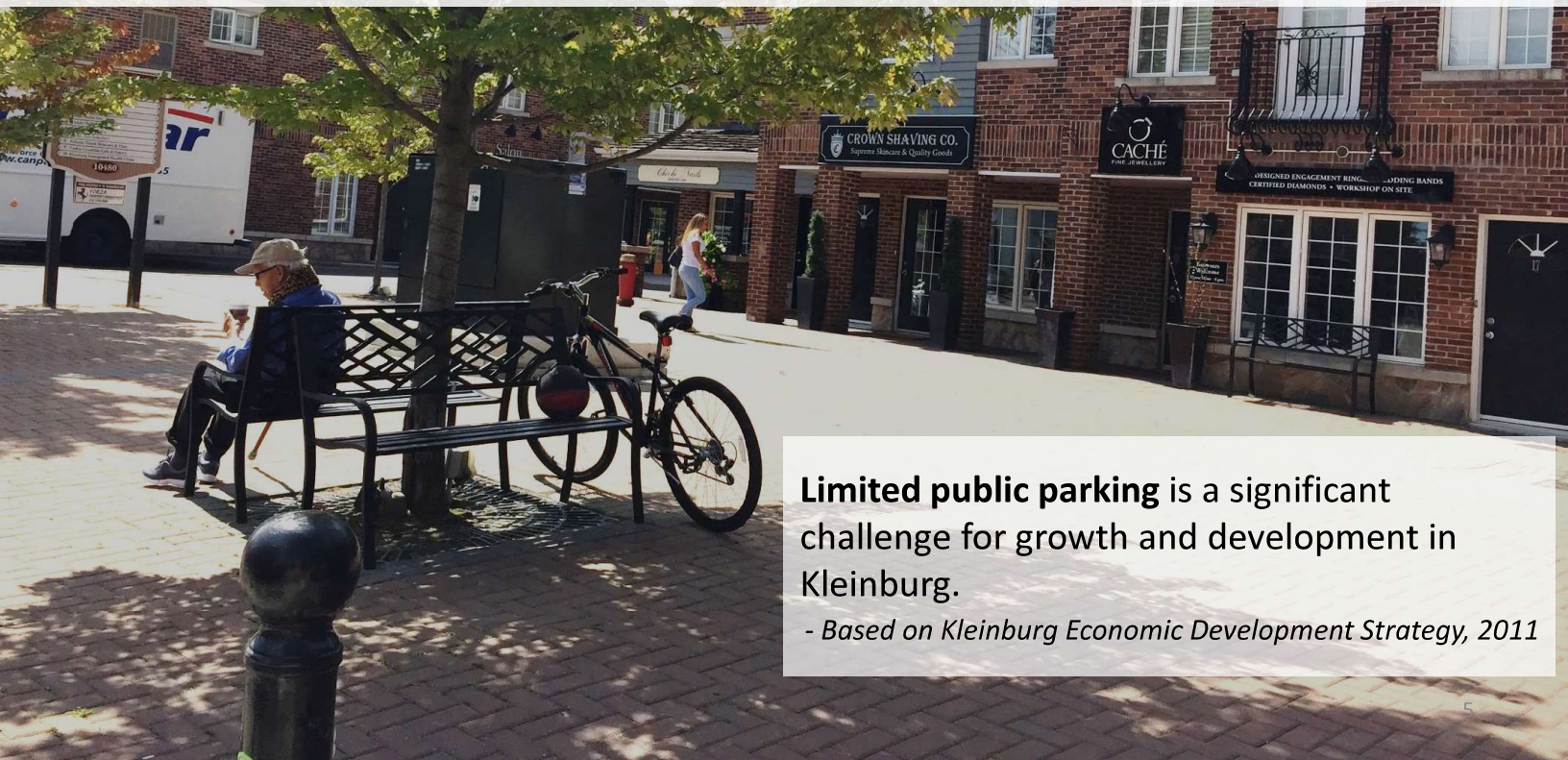
- **Introduce** the Kleinburg Parking Strategy Review and study team
- **Inform** on the intents and purposes of the study, the process being used, work completed to date and expected outcomes of the work
- **Gather** input on the parking issues, needs and opportunities from stakeholders throughout Kleinburg and surrounding areas
- **Open** communication channel for stakeholder input over the course of the study



## STUDY BACKGROUND

### Historic Kleinburg Village features:

- Stellar heritage and natural assets
- Islington Avenue, a vibrant main street
- Mixed use and retail/commercial land uses that attract visitors and area residents



**Limited public parking** is a significant challenge for growth and development in Kleinburg.

- Based on Kleinburg Economic Development Strategy, 2011



# STUDY OBJECTIVE AND APPROACH



**OBJECTIVE:** Develop a comprehensive and forward-looking parking strategy to facilitate growth and accommodate immediate and long term parking demands in Kleinburg



## Immediate and Future Parking Needs

Short-term (1 – 5 years), Medium-term (5 – 10 years), Long-term (2041) Horizons



## Strategic Parking Management Plan

Comprehensive parking strategies, policies, and guidelines

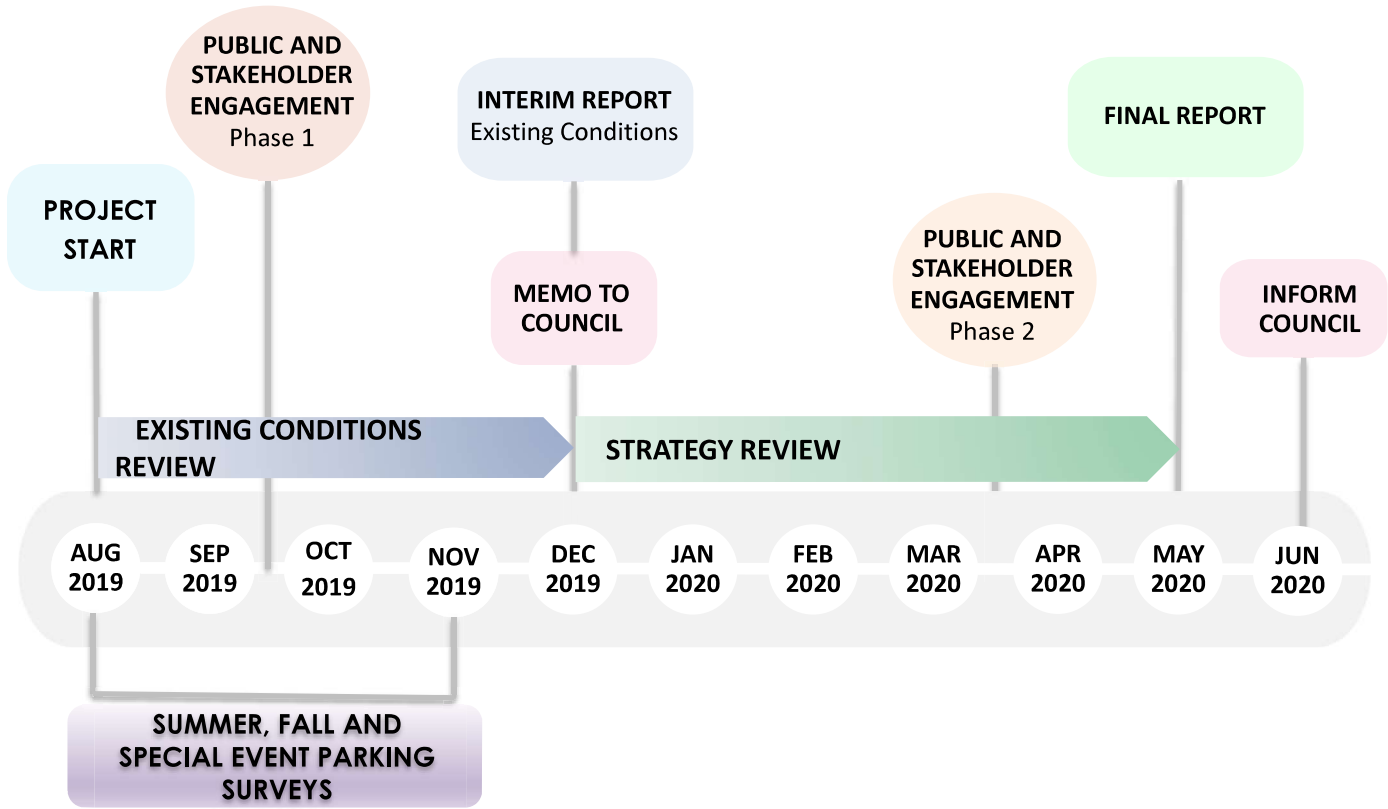


## Implementation Plan

Costs and funding strategy, phasing strategy and monitoring plan

## APPROACH

# STUDY FRAMEWORK



# STUDY OUTREACH



## Project Website

- Project Background and updates
- Opportunity to share feedback
- <http://vaughan.ca/KleinburgParking>

## Study Notices

- Notices for study commencement and parking data collection
- Available on project website

## Online Survey

- Collects input from the community about parking needs, issues, opportunities and desired outcomes in Kleinburg
- Open until end of October 2019
- <https://www.surveymonkey.com/r/KleinburgParking1>



## Public Information and Feedback Session

- September 26, 2019
- 5:00 PM to 8:00 PM
- Pierre Berton Heritage Centre, Kleinburg, ON



# WHAT WE HAVE OBSERVED



## Parking Usage / Parking Needs

**Illegal parking** both on-street and off-street (e.g. in no-parking zones along Kellam Street, in fire zones, in front of fire hydrants, in the kill strip etc.)

**Space designations** for residential / specific commercial uses within private lots not always followed

**Customers** park at the Public Library, Kleinburg Public School, Pierre Berton Heritage Centre and Doctor's House to walk to another establishment

**Visitors** to McMichael Art Gallery sometimes park at Bindertwine park and walk through the trails to the gallery



## Parking / Traffic Interactions

Vehicles **waiting or hesitating** to turn into a parking lot impacts through-traffic on Islington Avenue

Vehicles **backing out** of parking spaces impact through-traffic on Islington Avenue



## Signage / Wayfinding

Customers **unsure** whether parking is allowed along Islington Avenue

**Difficulty in seeing** parking restrictions at night along Kellam Street



# WHAT WE HAVE OBSERVED



## Traffic Operations and Issues

**High traffic volumes** and operations at the intersection of Islington Avenue and Stegman's Mill Road between approximately 4 PM – 6PM. Northbound queues can extend to Bindertwine Boulevard.

**Queues** along Stegman's Mill Road observed to extend to Napier Street

**Heavy vehicles** on Nashville Avenue and Stegman's Mill Road (especially due to Pine Valley detours)

**Trucks** make wide turns and impact crossing traffic along Islington Avenue



## Safety

Vehicles parked on-street often **encroach** onto the pedestrian sidewalk

Enforcement is required to bring vehicles to a **complete stop** at intersection of Islington Avenue with Nashville Road



## Pedestrians / Cyclists / Scooters

**Cyclists and scooters** ride both on the road and along sidewalk as there is no dedicated infrastructure for them

**Heavy pedestrian activity** around Islington Avenue and Kellam Street (Starbucks)

**Jay-walking** occurs, especially at intersection of Islington Avenue and Kellam Street (across from the busy Cookie Crumble Café)

**Cycling groups** meet in Kleinburg, particularly on weekends

**Casual cyclists** leave bicycles leaning against the Old Confectionery Hall

## NEXT STEPS AND STUDY CONTACT

- Following this Public Information and Feedback Session, the project team will:

### **Complete** data collection and analysis

- Fall parking surveys: Thursday, October 24 and Saturday, October 26, 2019
- Special event parking survey: November 2019

### **Collect** Online Survey #1 responses from September to October 2019

### **Project** future parking demands

### **Develop** and **evaluate** parking management strategies



- Please provide your contact information on the sign-in sheet for study updates or check the project website.
- Please talk with project team members during this Public Information and Feedback Session or direct any comments or questions to:

#### **Samar Saadi Nejad, P.Eng.**

Manager, Development Transportation Engineering  
City of Vaughan  
905-832-2281, ext. 8253  
[samar.saadinejad@vaughan.ca](mailto:samar.saadinejad@vaughan.ca)

#### **Mehemed Delibasic, P.Eng.**

Consultant Project Manager  
McIntosh Perry Consulting Engineers Ltd.  
289-319-3112  
[m.delibasic@mcintoshperry.com](mailto:m.delibasic@mcintoshperry.com)







## **KBIA ANNUAL GENERAL MEETING**



# KLEINBURG PARKING STRATEGY

Kleinburg BIA Annual General Meeting

**Presented By:**  
Samar Saadi Nejad  
Paul Grove  
Mehemed Delibasic

October 29, 2019



McINTOSH PERRY





## OUTLINE

- Study Background
- Study Objective and Approach
- Study Framework
- Study Outreach
- Current Progress
- Next Steps





# KLEINBURG PARKING STRATEGY - STUDY AREA





## STUDY BACKGROUND

### Why does Kleinburg need a Parking Strategy?

- Parking is continually highlighted as an existing concern in the Village
- Parking strategies must be developed to protect for the Village's future
- The Parking Strategy therefore will address both the short- and long-term



**Limited public parking** is a significant challenge for growth and development in Kleinburg.

*- Based on Kleinburg Economic Development Strategy, 2011*



# STUDY OBJECTIVE AND APPROACH

**OBJECTIVE:** Develop a comprehensive and forward-looking parking strategy to facilitate growth and accommodate immediate and long-term parking demands in Kleinburg



## Immediate and Future Parking Needs

Short-term (1 – 5 years)  
Medium-term (5 – 10 years)  
Long-term (2041)



## Strategic Parking Management Plan

Comprehensive parking strategies, policies, and guidelines

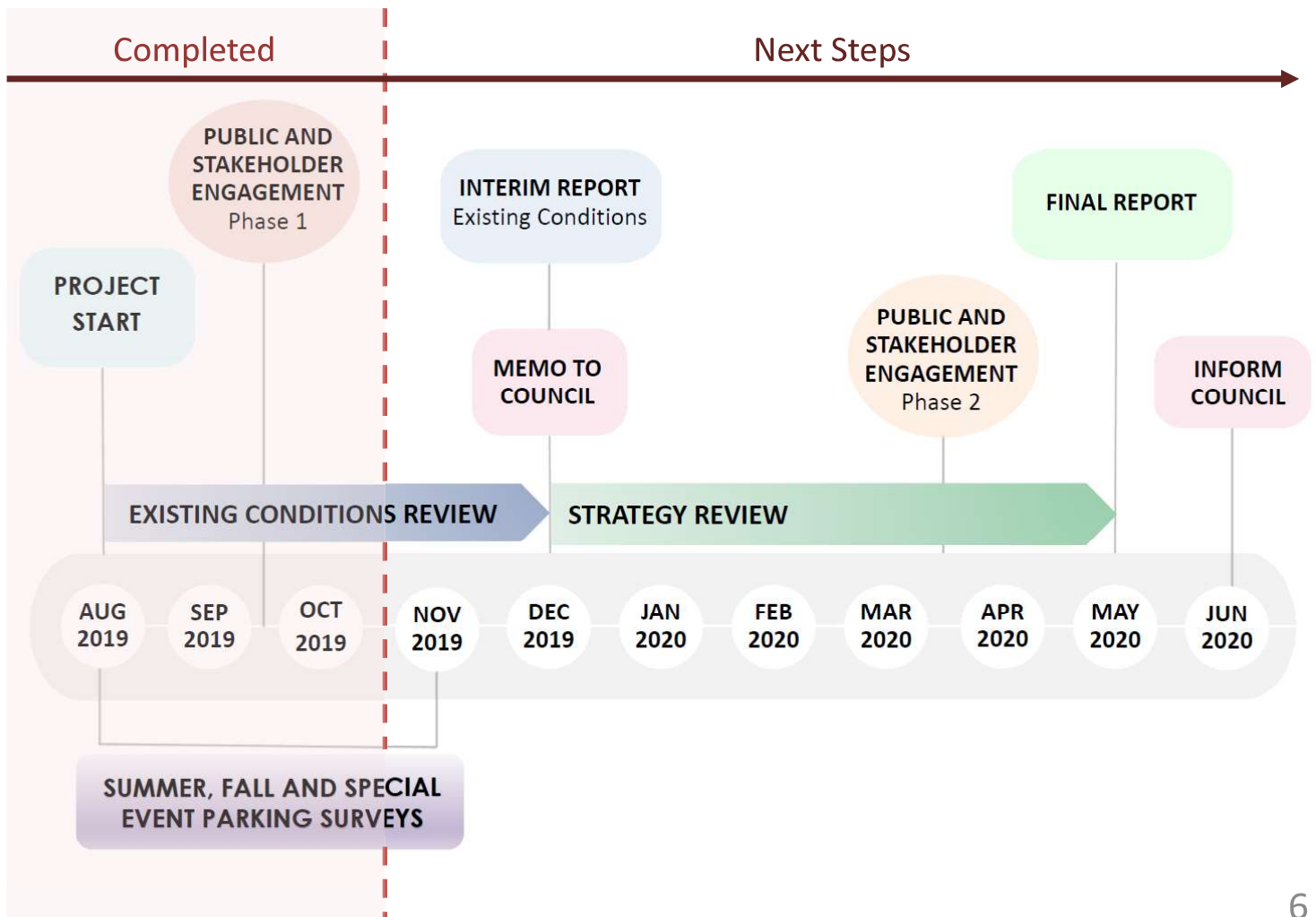


## Implementation Plan

Costs and funding strategy, phasing strategy and monitoring plan

## APPROACH

# STUDY FRAMEWORK



## STUDY OUTREACH

### Project Website

- Project Background and updates
- Opportunity to share feedback

### Study Notices

- Notices for study commencement and parking data collection
- Available on project website

### Online Survey

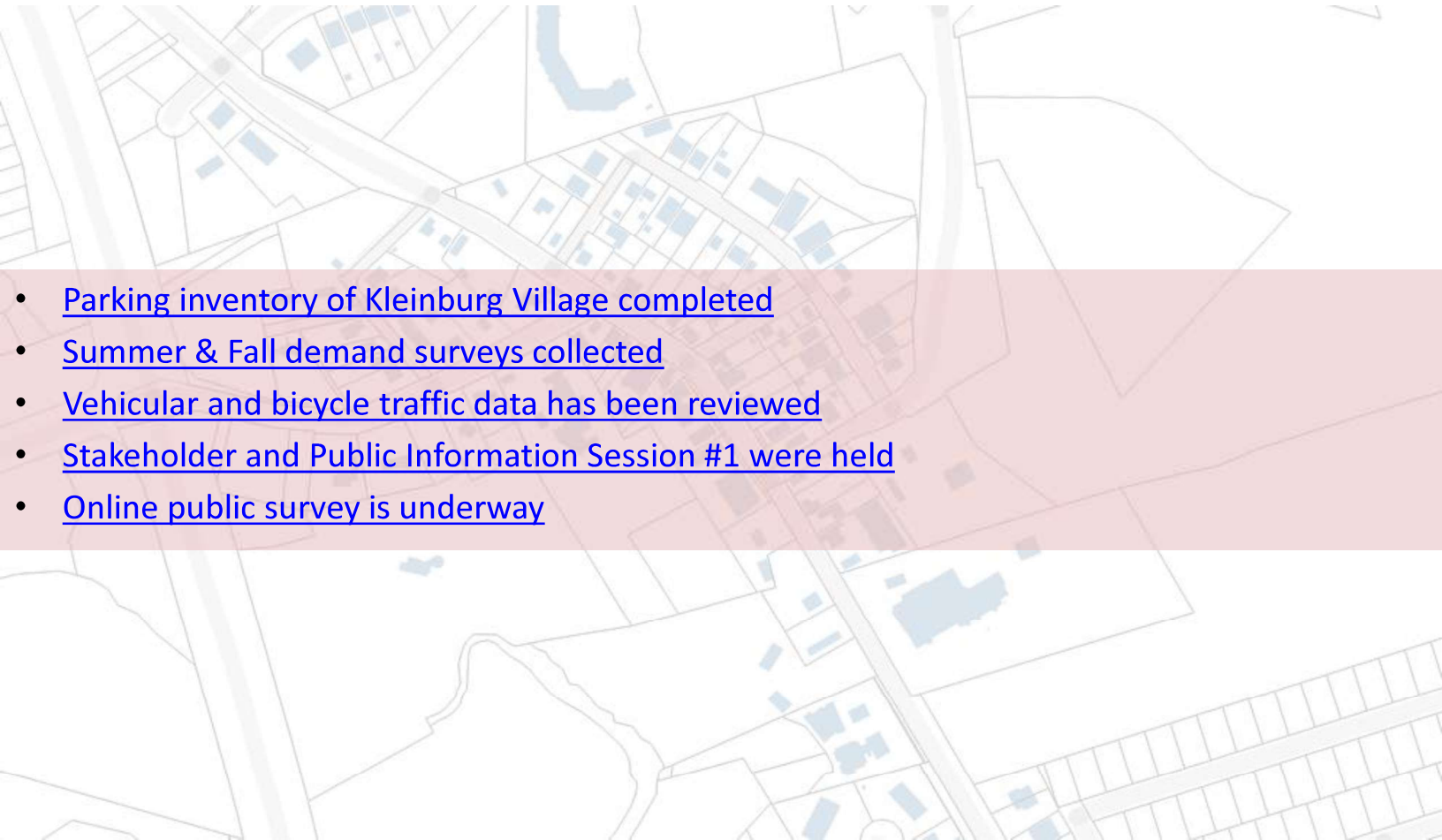
- Collects input from the community about parking needs, issues, opportunities and desired outcomes in Kleinburg
- Open until end of October 2019

### Public Information and Feedback Session

- Present progress to the public and gather input at key points in the project
- First session held September 26, 2019
- Second session to be held Spring, 2020



## CURRENT PROGRESS



- [Parking inventory of Kleinburg Village completed](#)
- [Summer & Fall demand surveys collected](#)
- [Vehicular and bicycle traffic data has been reviewed](#)
- [Stakeholder and Public Information Session #1 were held](#)
- [Online public survey is underway](#)

# CURRENT PROGRESS – PARKING INVENTORY

- The existing supply of parking has been inventoried, including on-street and off-street parking:
  - On-Street Parking
  - Off-Street Parking
  - Public parking
  - Private Parking
  - Publicly Accessible Parking



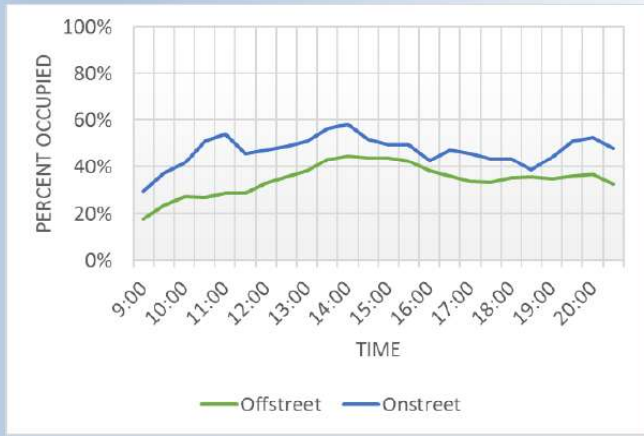
Parking Lot	Total Spaces (Accessible)	Parking Lot	Total Spaces (Accessible)
Lot #1	18 (1)	Lot #15	Un-marked
Lot #2	44 (2)	Lot #16	3
Lot #3	17 (1)	Lot #17	Un-marked
Lot #4	20 (1)	Lot #18	20
Lot #5	6	Lot #19	13
Lot #6	12 (1)	Lot #20	208 (2)
Lot #7	12	Lot #21	17 (2)
Lot #8	8 (1)	Lot #22	3
Lot #9	17 (1)	Lot #23	13 (1)
Lot #10	45 (3)	Lot #24	Un-marked
Lot #11	26 (1)	Lot #25	64 (1)
Lot #12	7 (1)	Lot #26	Un-marked
Lot #13	9	Lot #27	2
Lot #14	7	Lot #28	Un-marked
<b>On-Street</b>		<b>Total Spaces</b>	
Nashville Road (north side)		13	
Nashville Road (south side)		6	
Islington Avenue (East Side)		63	
Islington Avenue (West Side)		15	
Kellam Street		2	
Napier Street		30	



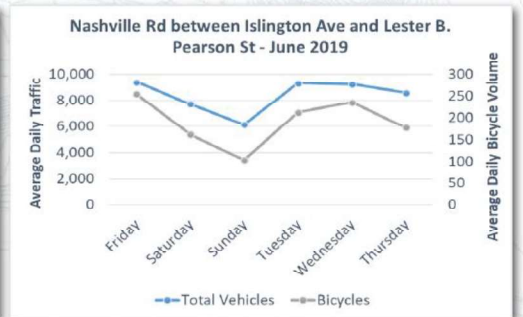
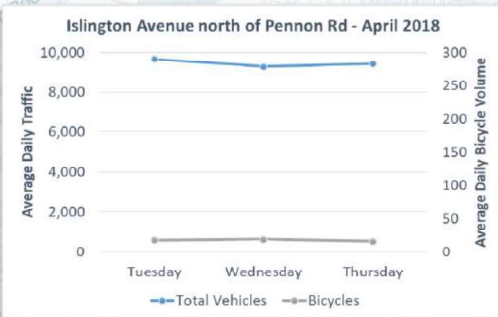
# CURRENT PROGRESS – PARKING SURVEYS & TRAFFIC

- Summer parking demand surveys were collected (Thurs Aug 22 & Sat Aug 24)
- Fall surveys recently completed (Thurs Oct 24 & Sat Oct 26)
- Traffic data was reviewed and collected of vehicular and bicycle traffic volumes

Thursday (Aug 22, 2019)



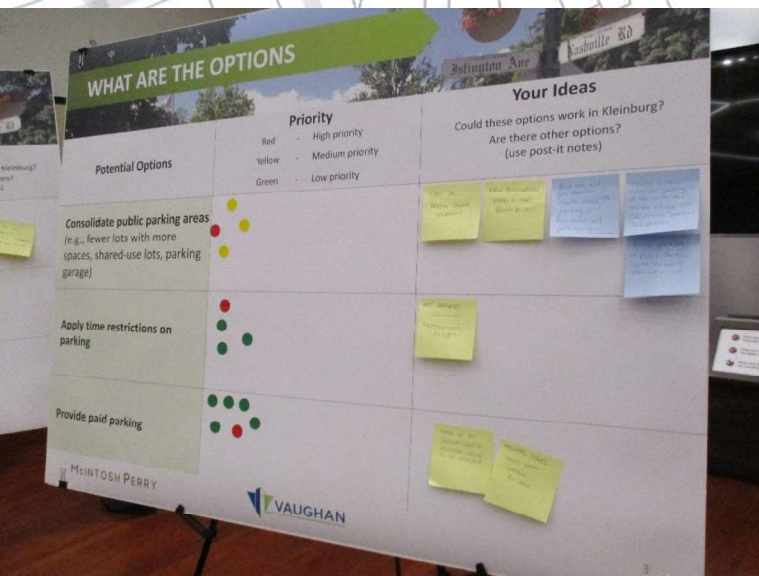
Saturday (Aug 24, 2019)





# CURRENT PROGRESS - CONSULTATION

- **First stakeholder meeting** held on September 17, 2019
- **Public Information Session #1** held on September 26, 2019
  - Existing conditions and preliminary identified challenges presented to the public
  - Potential options and ideas sourced from public gathered for inclusion in the study



## CURRENT PROGRESS – ONLINE SURVEY

- **Online survey** has been posted for completion by the general public:
  - Live until end of October, 2019
  - Intended to contribute to the existing conditions review and identify existing challenges
  - Will preliminarily gather potential solutions to the identified challenges
  - Second online survey to be posted in 2020 when developing the solutions

Weekday  Weekend

**2. What part of the day was that trip?**

Morning (before 11 a.m.)  Afternoon (2 p.m. to 5 p.m.)

Noon (11 a.m. to 2 p.m.)  Evening (after 5 p.m.)

**3. What was the purpose of your trip? (select all that apply)**

<input type="checkbox"/> Shop	<input type="checkbox"/> Medical appointment
<input type="checkbox"/> Work	<input type="checkbox"/> Personal service (banking, hairdresser, spa, etc.)
<input type="checkbox"/> Recreation	<input type="checkbox"/> Special event (wedding, community meeting, etc.)
<input type="checkbox"/> Residence	<input type="checkbox"/> Visit a resident
<input type="checkbox"/> Business meeting	<input type="checkbox"/> Meeting point (bike/running club, etc.)
<input type="checkbox"/> Tourism (museum, art gallery, etc.)	<input type="checkbox"/> Pick-up/Drop-off at school/daycare
<input type="checkbox"/> Dining	<input type="checkbox"/> Visit the library
<input type="checkbox"/> Other primary purpose of trip (please specify)	

**4. Where were you coming from?**

Kleinburg  Whitchurch-Stouffville

Vaughan (but not Kleinburg)  Markham

# WHAT WE HAVE LEARNED SO FAR

## Parking Usage / Parking Needs

**Illegal parking** both on-street and off-street (e.g. in no-parking zones along Kellam Street, in fire zones, in front of fire hydrants, in the kill strip etc.)

**Space designations** for residential / specific commercial uses within private lots not always followed

**Customers** park at the Public Library, Kleinburg Public School, Pierre Berton Heritage Centre and Doctor's House to walk to another establishment

**Visitors** to McMichael Art Gallery sometimes park at Bindertwine park and walk through the trails to the gallery

## Parking / Traffic Interactions

Vehicles' **waiting or hesitating** to turn into a parking lot impacts through-traffic on Islington Avenue

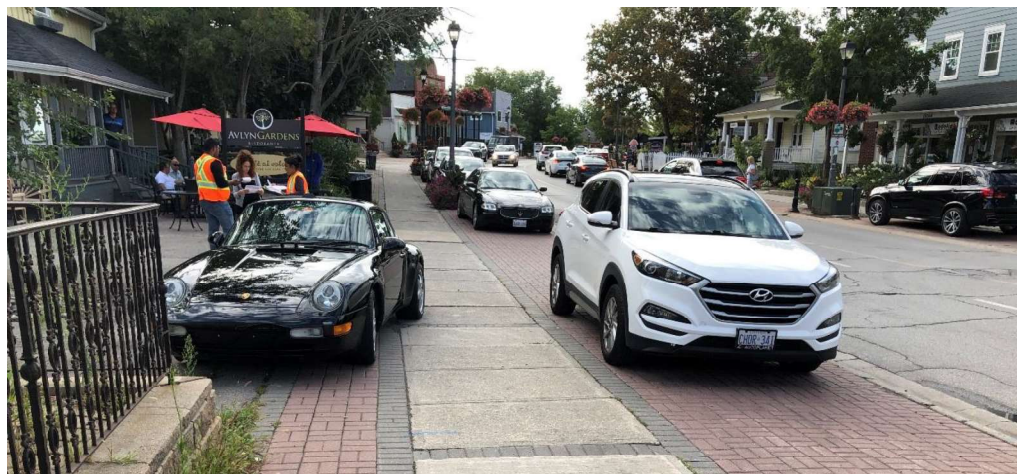
Vehicles **backing out** of parking spaces impact through-traffic on Islington Avenue



## Signage / Wayfinding

Customers **unsure** whether parking is allowed along Islington Avenue

**Difficulty in seeing** parking restrictions at night along Kellam Street





## WHAT WE HAVE LEARNED SO FAR



### Traffic Operations and Issues

**High traffic volumes** and operations at the intersection of Islington Avenue and Stegman's Mill Road between approximately 4 PM – 6PM. Northbound queues can extend to Bindertwine Boulevard.

**Queues** along Stegman's Mill Road observed to extend to Napier Street

**Heavy vehicles** on Nashville Avenue and Stegman's Mill Road (especially due to Pine Valley detours)

**Trucks** make wide turns and impact crossing traffic along Islington Avenue



### Safety

Vehicles parked on-street often **encroach** onto the pedestrian sidewalk

Enforcement is required to bring vehicles to a **complete stop** at intersection of Islington Avenue with Nashville Road



### Pedestrians / Cyclists / Scooters

**Cyclists and scooters** ride both on the road and along sidewalk as there is no dedicated infrastructure for them

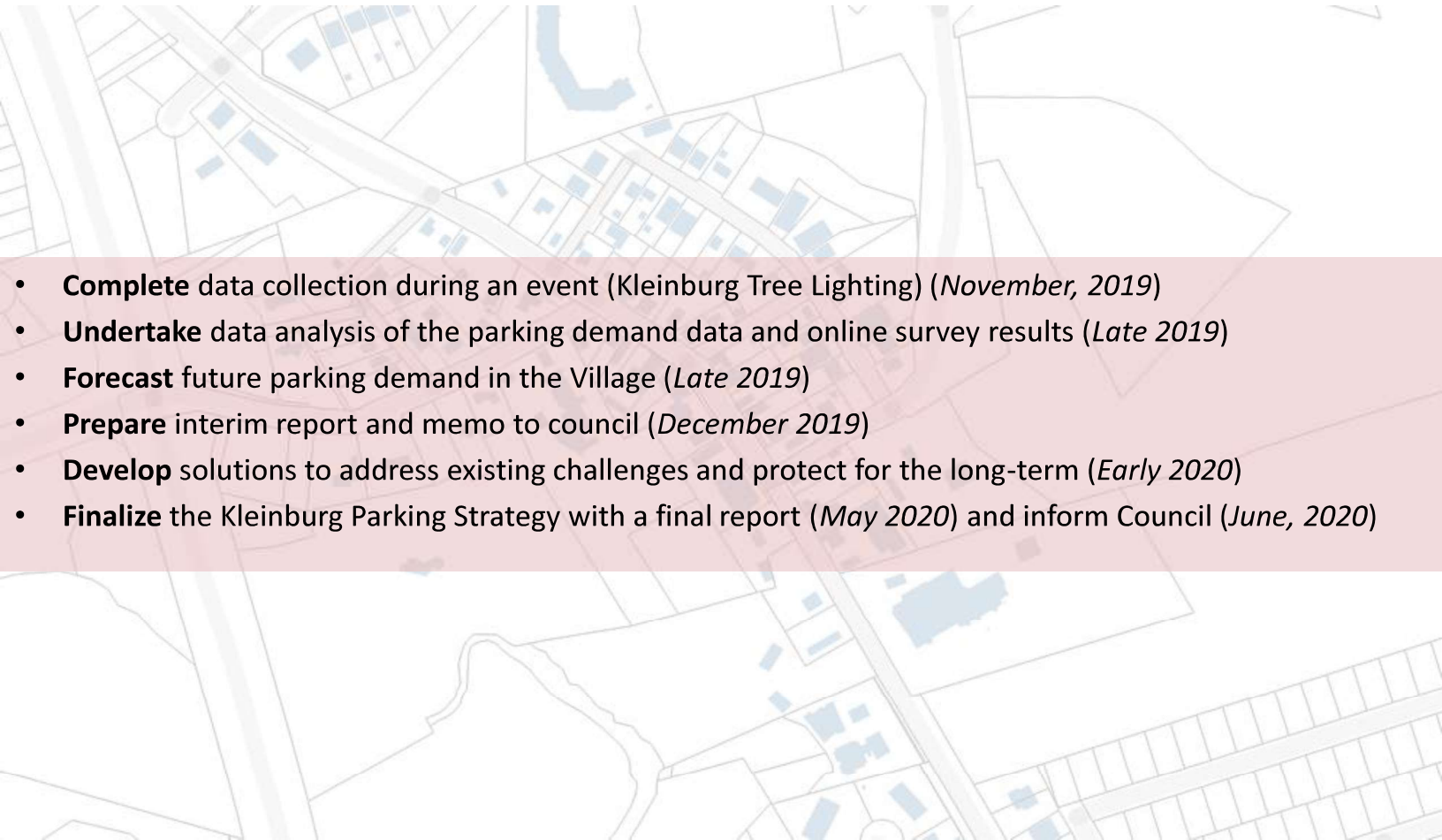
**Heavy pedestrian activity** around Islington Avenue and Kellam Street (Starbucks)

**Jay-walking** occurs, especially at intersection of Islington Avenue and Kellam Street (across from the busy Cookie Crumble Café)

**Cycling groups** meet in Kleinburg, particularly on weekends

**Casual cyclists** leave bicycles leaning against the Old Confectionary Hall

## NEXT STEPS



- **Complete** data collection during an event (Kleinburg Tree Lighting) (*November, 2019*)
- **Undertake** data analysis of the parking demand data and online survey results (*Late 2019*)
- **Forecast** future parking demand in the Village (*Late 2019*)
- **Prepare** interim report and memo to council (*December 2019*)
- **Develop** solutions to address existing challenges and protect for the long-term (*Early 2020*)
- **Finalize** the Kleinburg Parking Strategy with a final report (*May 2020*) and inform Council (*June, 2020*)

