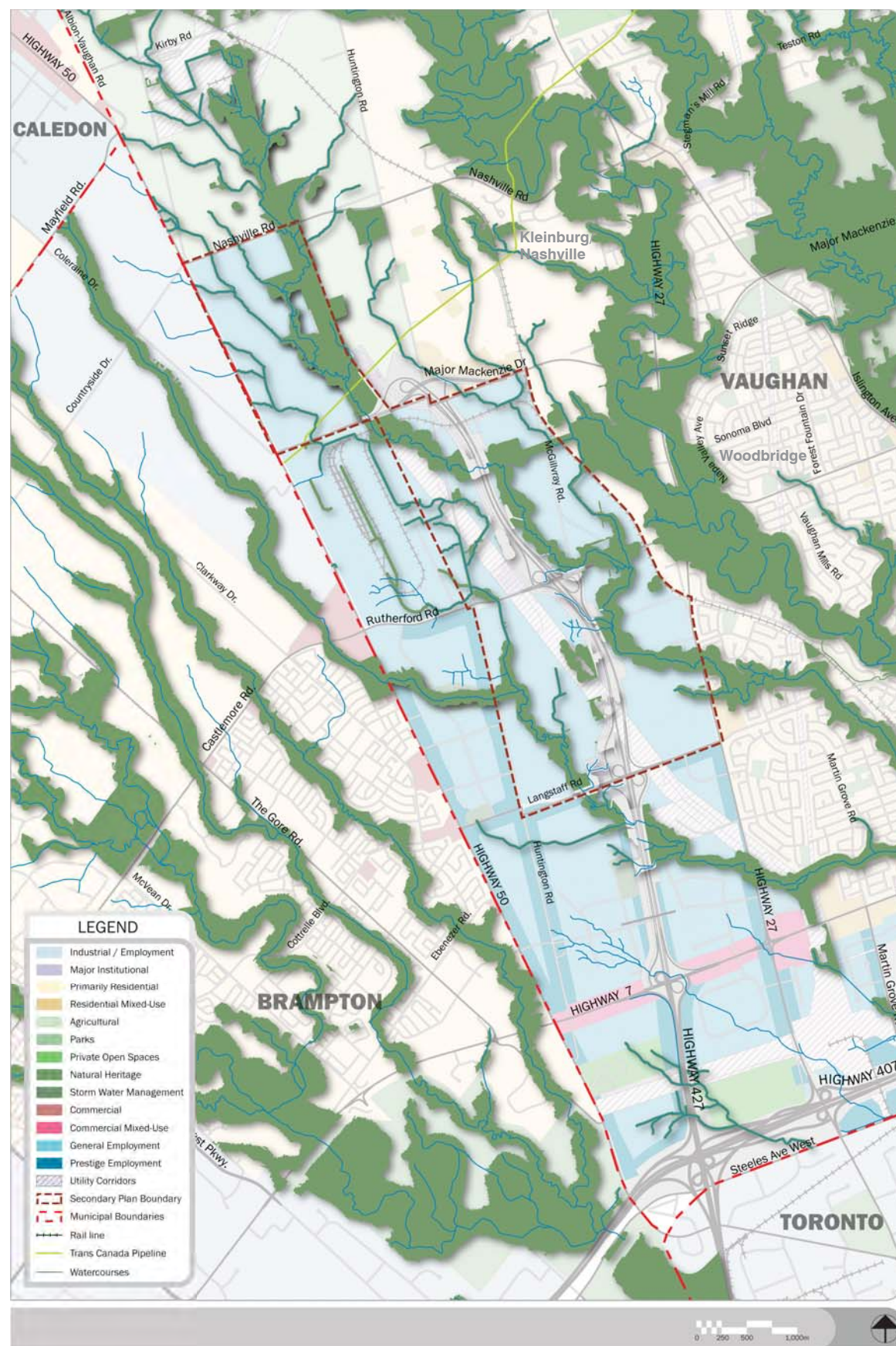


West Vaughan Employment Secondary Plan



Environment

A large network of tributaries to the Humber River form the basis of the WVEA's natural heritage network. These natural heritage resources provide a variety of ecosystem functions and should be preserved and enhanced through new development. Large industrial parcels will provide opportunities for on-site environmental enhancement, especially through naturalized stormwater management. Other urban design and built form initiatives, such as green roofs, on-site green energy, and other means, could provide further environmental enhancements. As a new employment area, the WVEA can also support eco-industrial networks and relationships involving clusters of related industries.

Policy Directions

- Protect and enhance natural heritage in the WVEA, including wildlife corridor protection and water quality enhancements in the Humber River watershed
- Recognize the hydro corridor as an opportunity to grow the natural heritage network
- Promote the natural heritage network for trail development, where appropriate
- Encourage green development approaches including:
 - On-site and, where appropriate, shared stormwater management practices and infrastructure that contributes to and is integrated with the natural heritage network;
 - Water reclamation for landscaping and non-potable uses; and
 - Green roofs; and
 - On-site energy production, such as solar electricity and hot water.
- Support and encourage the development of eco-industrial networks, which can minimize energy consumption, encourage re-use of industrial by-products, and minimize transportation and shipping needs.

