

**What are the key elements of
the New Official Plan?**



1

**Vaughan's New
Official Plan
Conforms with
Provincial &
Regional policies**

A new Provincial and Regional Planning Framework is in place



PLANNING FRAMEWORK:

- Apply Provincial/Regional growth forecasts
- Protect Greenbelt and other Countryside/Natural Features
- Set intensification targets
- Identify any employment land use conversions
- Minimize urban boundary expansions

2

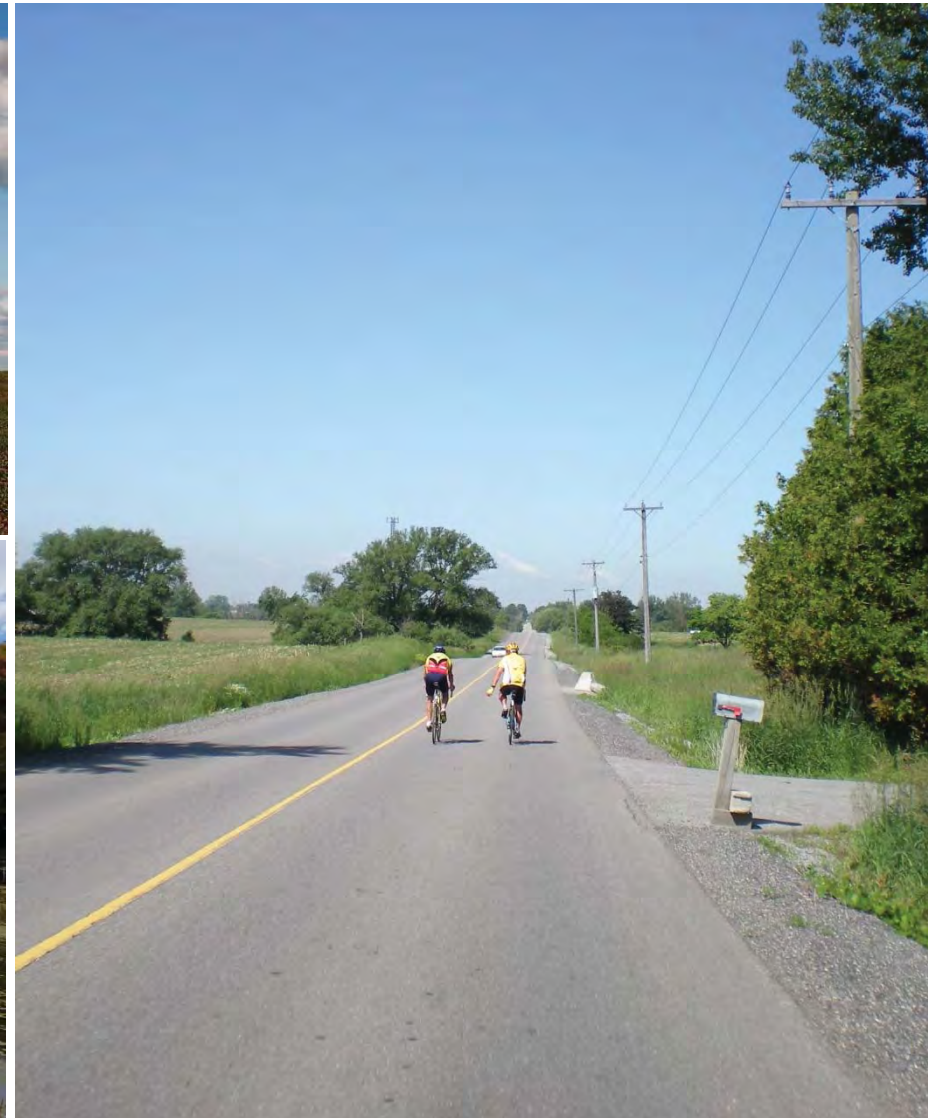
**Vaughan's New
Official Plan**

**Protects & enhances
the places that make
Vaughan great**

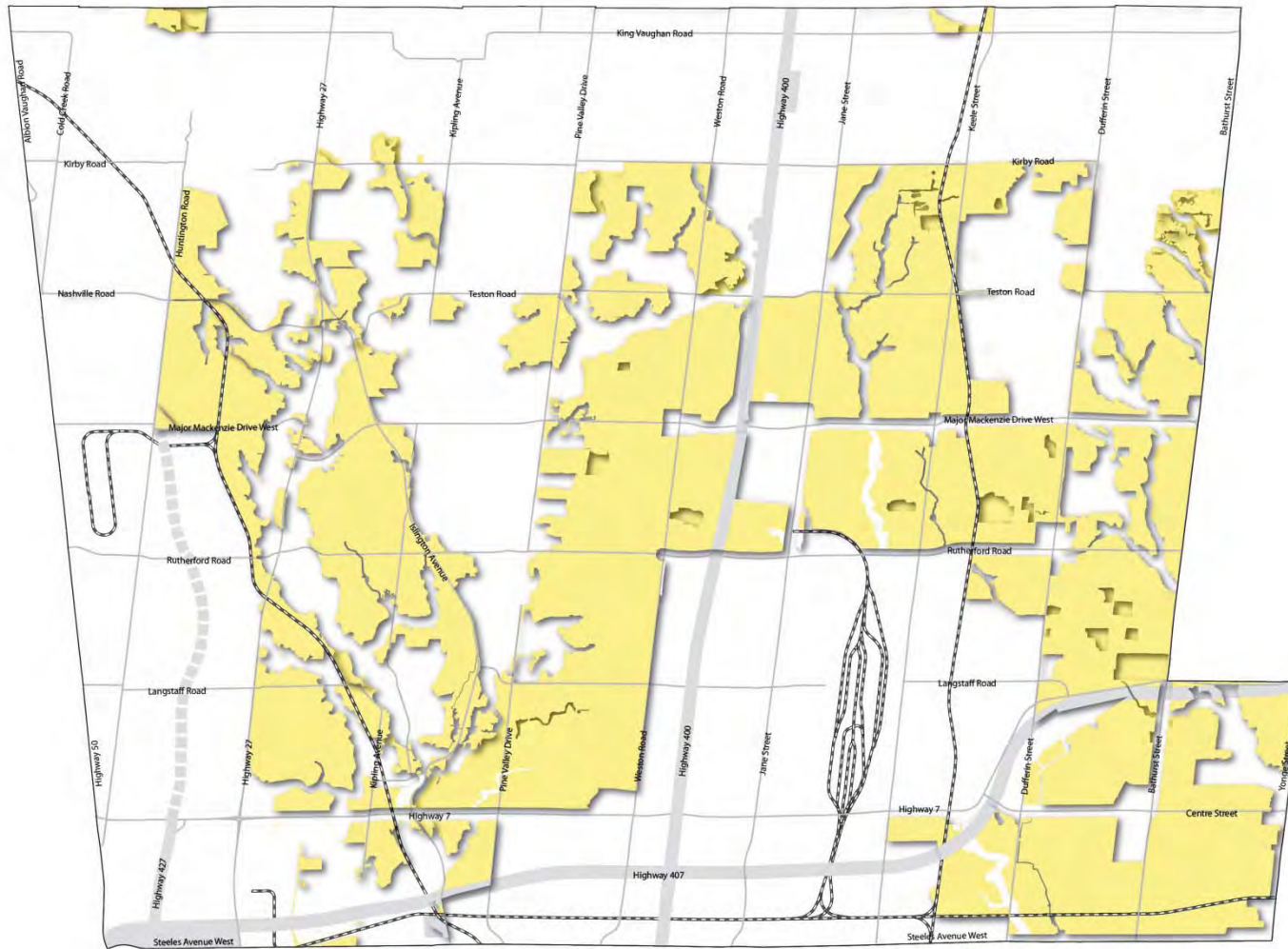
40% of Vaughan is protected as Natural Areas and Countryside



40% of Vaughan is protected as Natural Areas and Countryside



36% of Vaughan is maintained as Community Areas



36% of Vaughan is maintained as Community Areas



20% of Vaughan is designated as Employment Areas to support economic and job growth



20% of Vaughan is designated as Employment Areas to support economic and job growth



3

**Vaughan's New
Official Plan**

**Provides a balanced
and responsible
approach to achieve
sustainable growth**

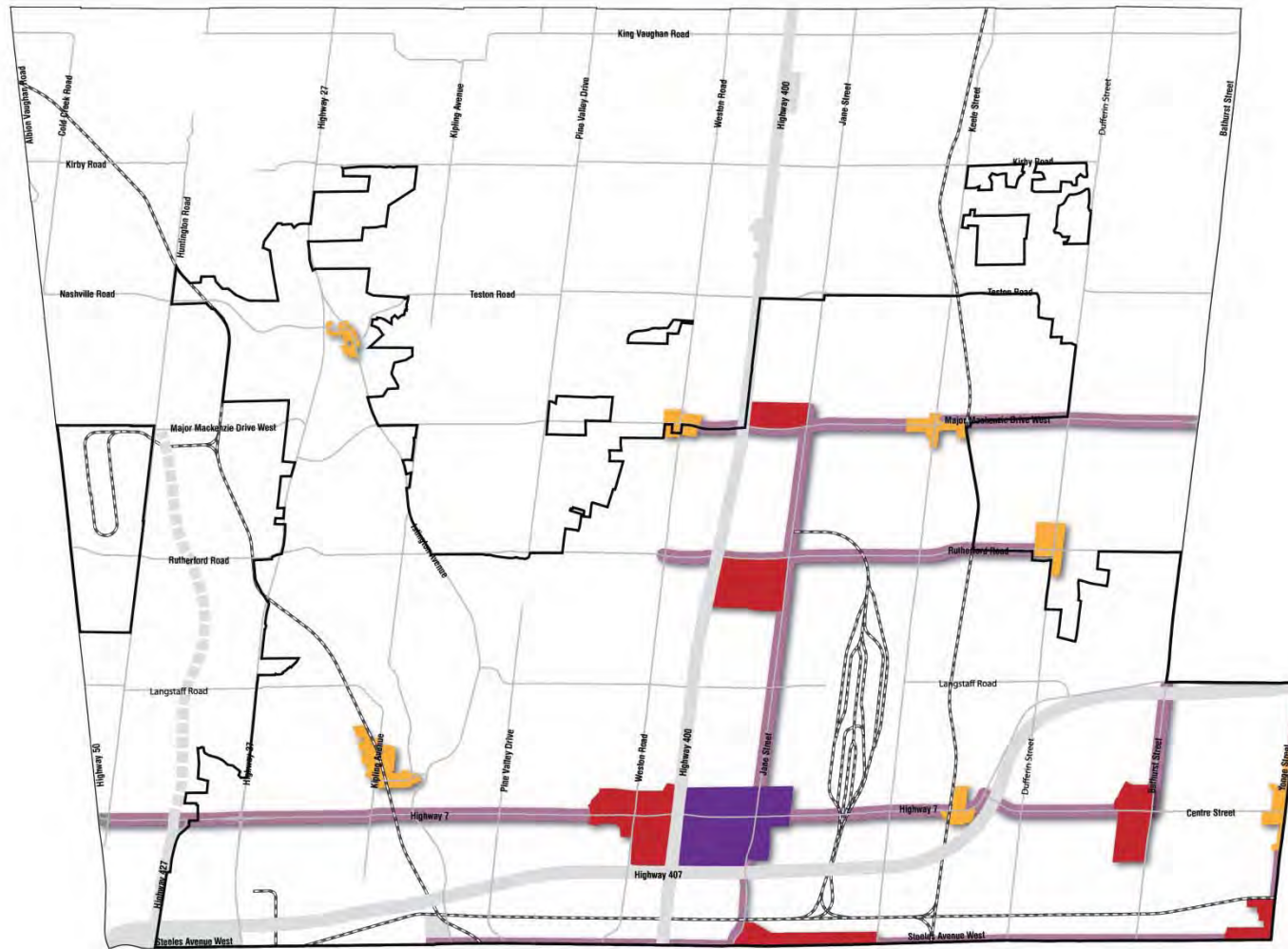
The urban boundary will expand by only 3%



This is the smallest urban expansion in Vaughan's history



45% of new development will be through Intensification

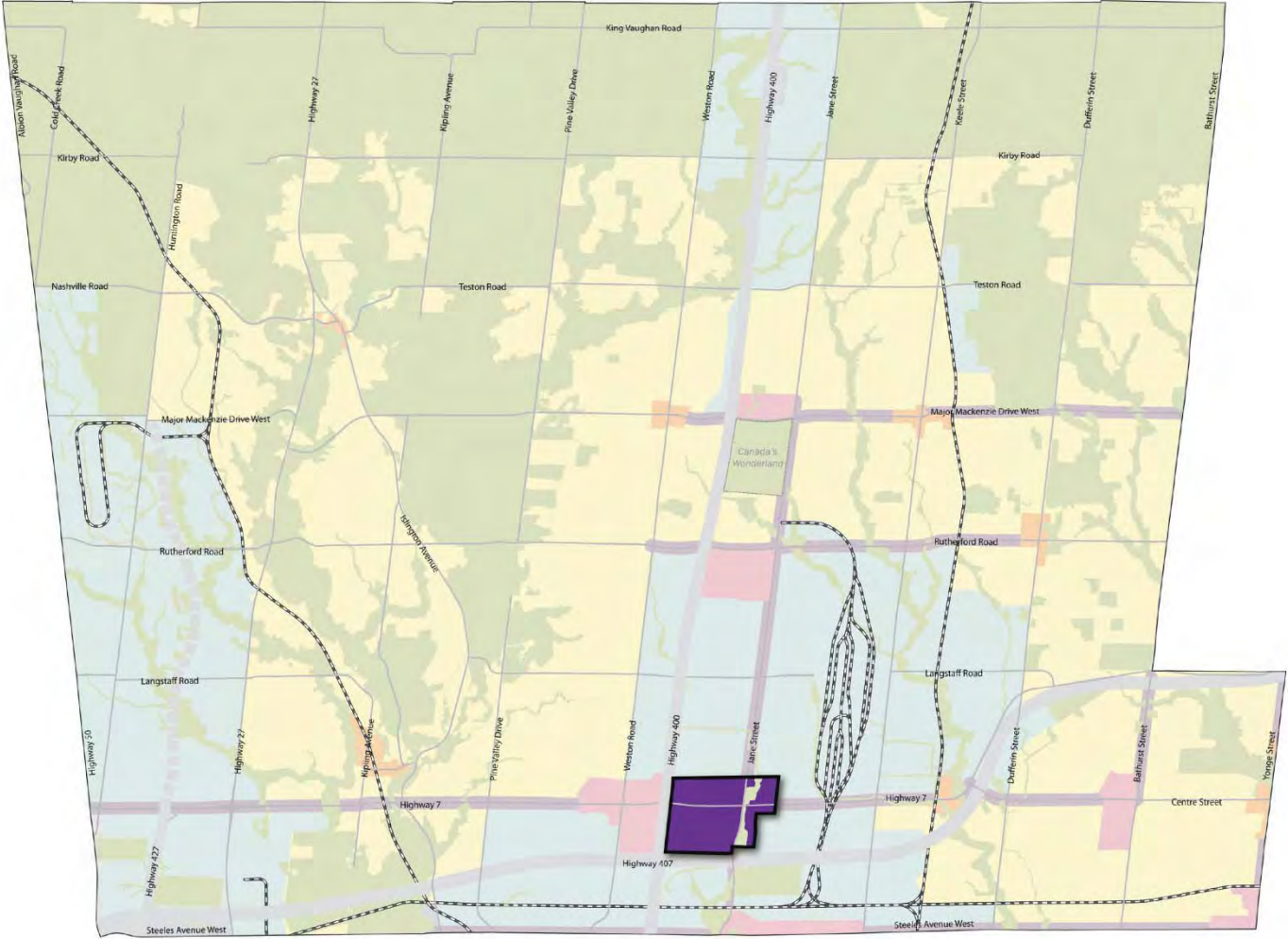


4

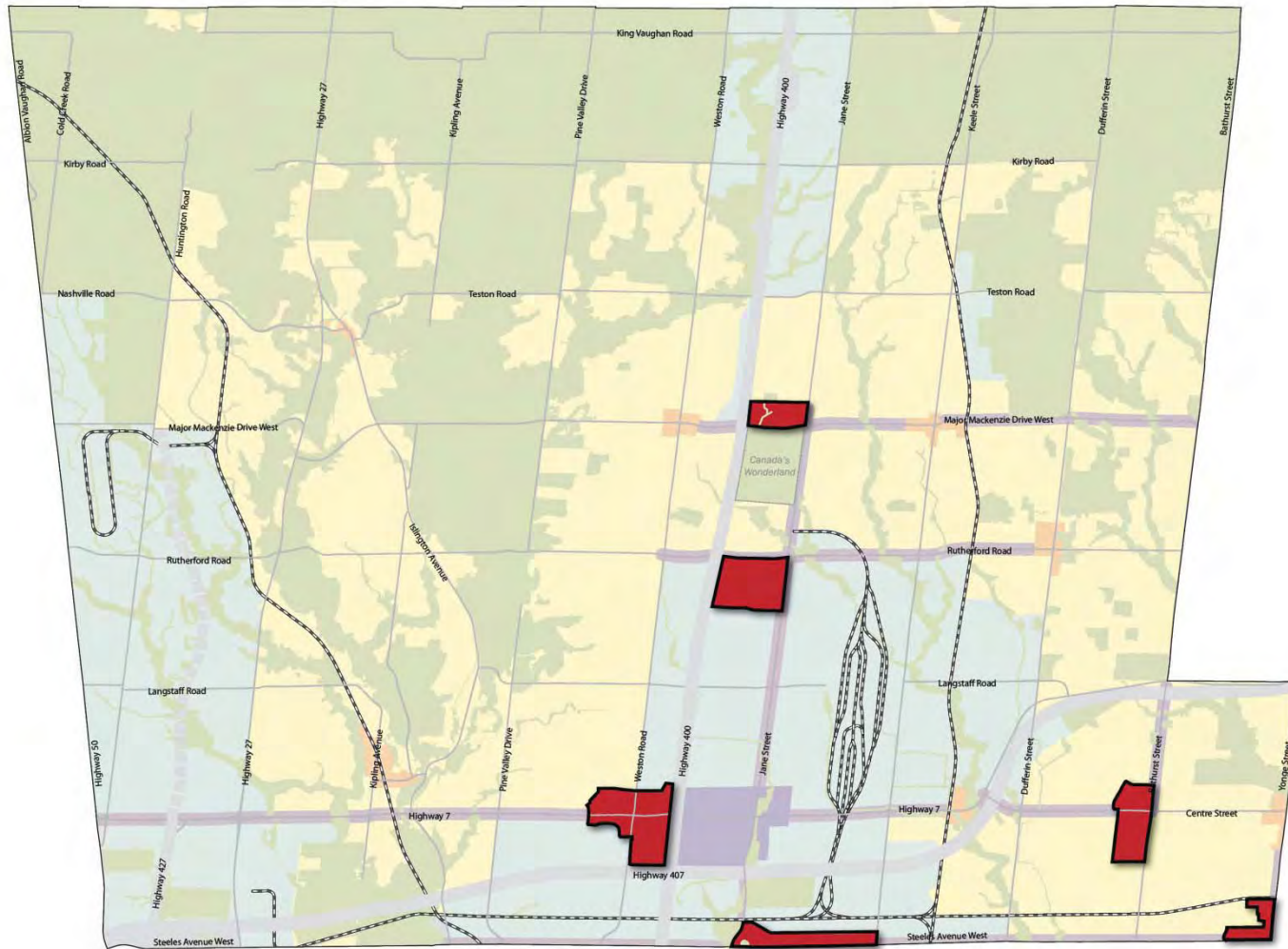
**Vaughan's New
Official Plan**

**Will achieve
intensification targets
through different
scales of mixed-use
development**

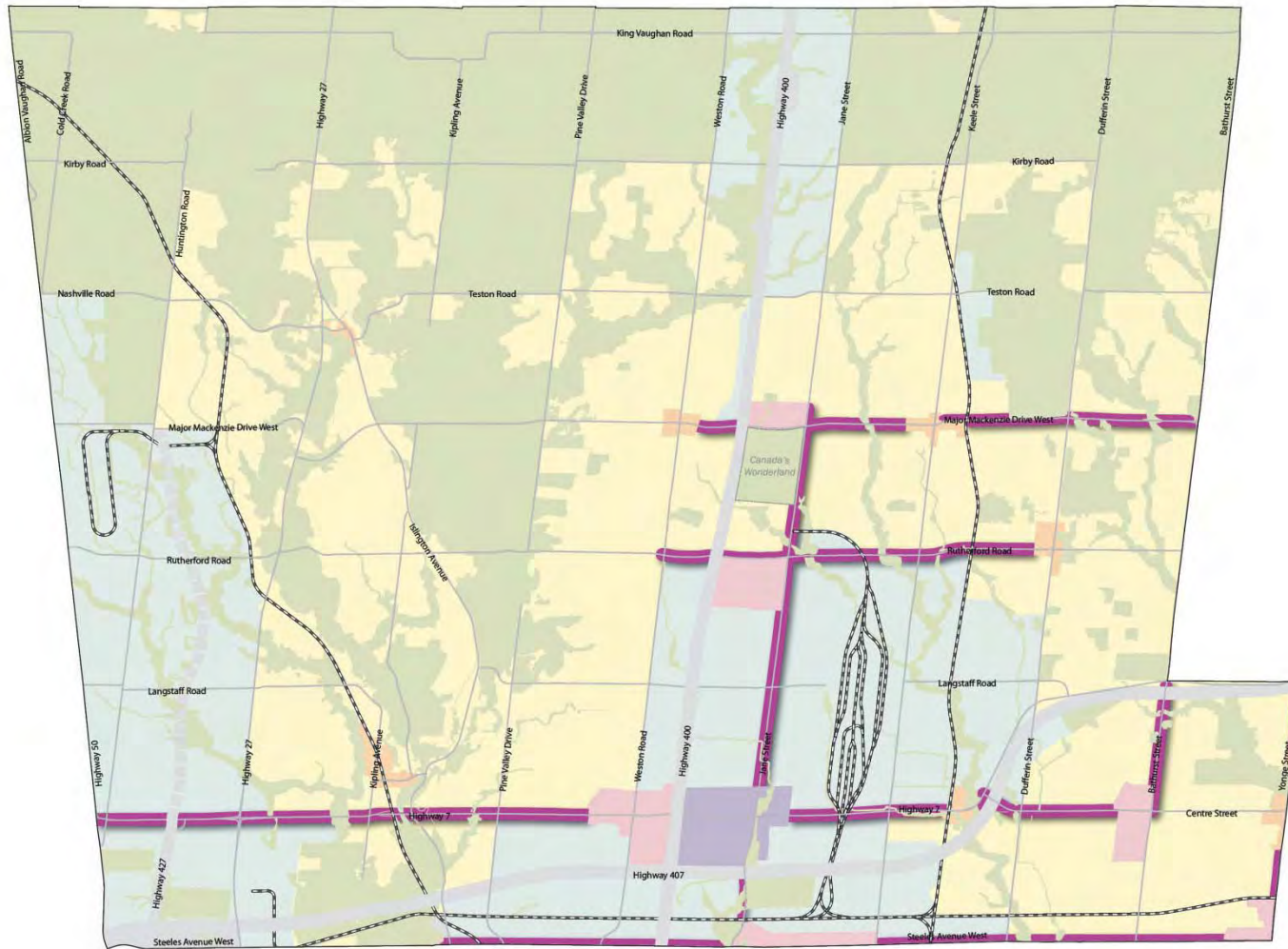
The Vaughan Metropolitan Centre will be the City's downtown



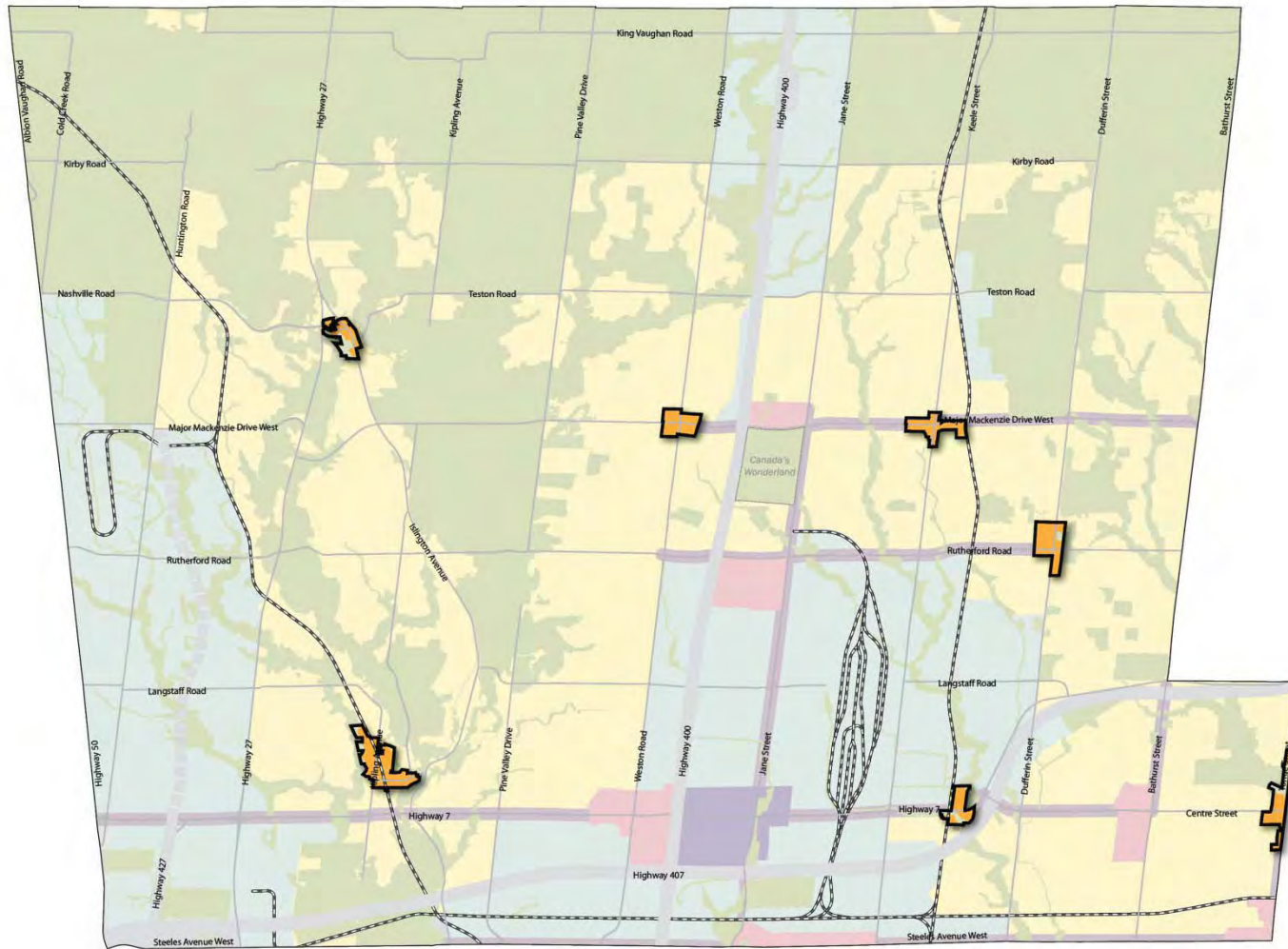
Primary Centres will accommodate a range of uses



Primary Intensification Corridors will link Centres



Local Centres will act as the focus for Communities



5

**Vaughan's New
Official Plan**

**Shifts transportation
policy emphasis to
transit, cycling and
walking**

Vaughan's New Official Plan shifts transportation policy emphasis to transit, cycling and walking



POLICY HIGHLIGHTS:

- Transit modal split target for 2031: 30% Citywide and 50% in Intensification Areas
- 50% of residents will be within 200m of transit, 90% of residents will be within 500m of transit
- Land-use policies are linked to transit service



6

**Vaughan's New
Official Plan**

**Will ensure it remains
one of Canada's
strongest cities for
job growth & economic
development**

Job Growth & Economic Development



POLICY HIGHLIGHTS:

- 1,200 ha of vacant employment lands available for development
- Major Office and Retail uses are directed to Intensification Areas
- Attract green industries



7

Vaughan's New Official Plan

Positions it as a leader
in environmental
protection and
sustainability

Environmental Protection and Sustainability



POLICY HIGHLIGHTS:

- Natural Heritage Network protects a system including core features
- Policies to support water and energy conservation, and to encourage sustainable buildings
- Policies to protect agricultural production and support urban agriculture



8

**Vaughan's New
Official Plan
Emphasizes
design excellence**

Design Excellence



POLICY HIGHLIGHTS:

- Emphasis on placemaking
- Design policies to guide public realm improvements
- Introduction of a Design Review Process
- Promotion of Public Art



9

**Vaughan's New
Official Plan**

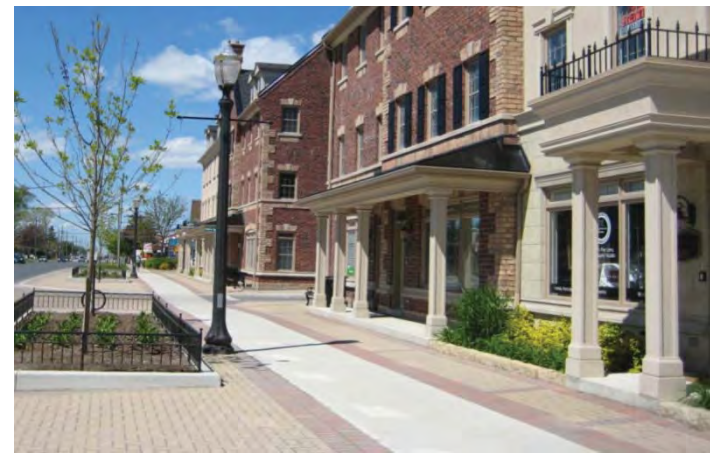
**Ensures the continued
vitality of Vaughan's
retail sector**

Retail Sector



POLICY HIGHLIGHTS:

- Policies to leverage retail to promote mixed-use development
- Major retail defined as over 10,000 square metres, prohibited in employment areas
- Restrictions and guidelines for drive-throughs



10

**Vaughan's New
Official Plan
Responds to
community &
social service needs**

Community and Social Service Needs



POLICY HIGHLIGHTS:

- Provide a wide variety of housing types
- Universal Design policies
- Community and Social Services facilities directed to Intensification Areas and those served by transit
- Promote hospital and health care campus

