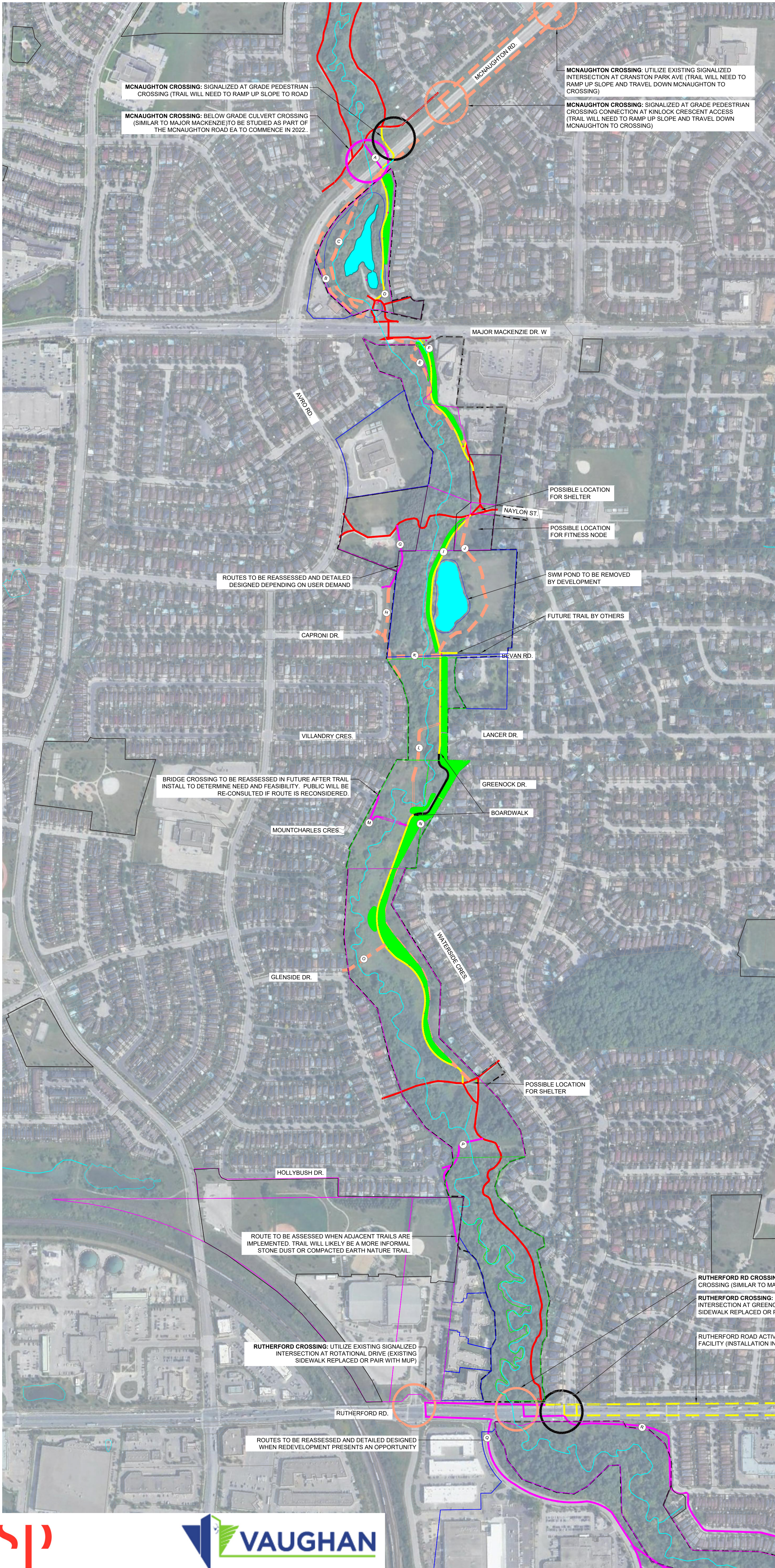
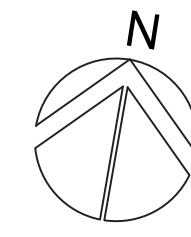


Alternative Assessment & Future Options



LEGEND KEY

- SITE BOUNDARY
- EXISTING TRAIL - FACILITY (TO REMAIN)
- EXISTING TRAIL - (UPGRADE TO 3m ASPHALT)
- PROPOSED NEW TRAIL - (3m WIDE ASPHALT)
- RUTHERFORD ROAD ACTIVE TRANSPORTATION FACILITY (INSTALLATION IN PROGRESS)
- ④ TRAIL ALIGNMENT LABELS
- PROPOSED CROSSING
- PROPOSED CROSSING - EXPLORED AND NOT RECOMMENDED
- PROPOSED CROSSING - POTENTIAL FUTURE OPTION (REQUIRES FUTURE STUDY)
- TRAIL ALIGNMENT - EXPLORED AND NOT RECOMMENDED
- TRAIL ALIGNMENT - POTENTIAL FUTURE OPTION (REQUIRES FUTURE STUDY)
- TRCA PROPERTY
- CITY OF VAUGHAN PROPERTY
- PRIVATE PROPERTY
- PROPOSED SEATING NODE
- PROPOSED TRAIL HEAD MAP
- PROPOSED MINOR WAYFINDING SIGNAGE
- DON RIVER WEST BRANCH
- TRCA 100 YEAR FLOODLINE
- PROPOSED PLANTING
- WATER BODY
- TRAIL ALIGNMENTS - REFER TO FEASIBILITY STUDY
- STORMWATER MANAGEMENT POND
- PARKS

Throughout the Study process, multiple routes and crossings where evaluated and discussed with staff, agencies and the public.

This map provides a record of routes considered and eliminated, and those identified for future consideration.