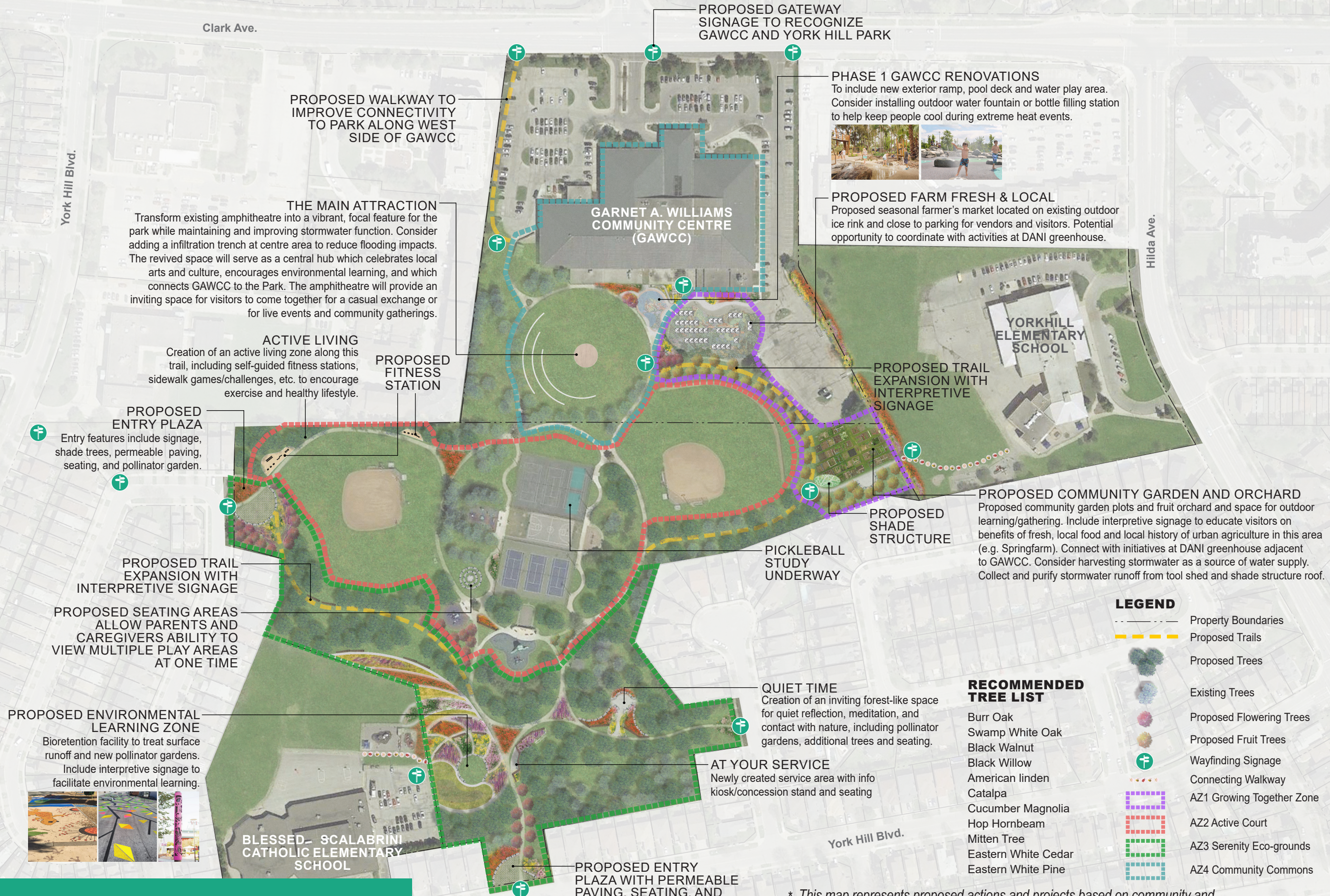


YORK HILL DISTRICT PARK



Clark Ave.

York Hill Blvd.

Hilda Ave.

PROPOSED GATEWAY SIGNAGE TO RECOGNIZE GAWCC AND YORK HILL PARK

PROPOSED WALKWAY TO IMPROVE CONNECTIVITY TO PARK ALONG WEST SIDE OF GAWCC

PHASE 1 GAWCC RENOVATIONS
To include new exterior ramp, pool deck and water play area. Consider installing outdoor water fountain or bottle filling station to help keep people cool during extreme heat events.



GARNET A. WILLIAMS COMMUNITY CENTRE (GAWCC)

PROPOSED FARM FRESH & LOCAL
Proposed seasonal farmer's market located on existing outdoor ice rink and close to parking for vendors and visitors. Potential opportunity to coordinate with activities at DANI greenhouse.

THE MAIN ATTRACTION
Transform existing amphitheatre into a vibrant, focal feature for the park while maintaining and improving stormwater function. Consider adding an infiltration trench at centre area to reduce flooding impacts. The revived space will serve as a central hub which celebrates local arts and culture, encourages environmental learning, and which connects GAWCC to the Park. The amphitheatre will provide an inviting space for visitors to come together for a casual exchange or for live events and community gatherings.

PROPOSED TRAIL EXPANSION WITH INTERPRETIVE SIGNAGE

ACTIVE LIVING
Creation of an active living zone along this trail, including self-guided fitness stations, sidewalk games/challenges, etc. to encourage exercise and healthy lifestyle.

PROPOSED FITNESS STATION

PROPOSED COMMUNITY GARDEN AND ORCHARD
Proposed community garden plots and fruit orchard and space for outdoor learning/gathering. Include interpretive signage to educate visitors on benefits of fresh, local food and local history of urban agriculture in this area (e.g. Springfarm). Connect with initiatives at DANI greenhouse adjacent to GAWCC. Consider harvesting stormwater as a source of water supply. Collect and purify stormwater runoff from tool shed and shade structure roof.

PROPOSED ENTRY PLAZA
Entry features include signage, shade trees, permeable paving, seating, and pollinator garden.

PROPOSED SHADE STRUCTURE

PICKLEBALL STUDY UNDERWAY

PROPOSED TRAIL EXPANSION WITH INTERPRETIVE SIGNAGE

PROPOSED SEATING AREAS ALLOW PARENTS AND CAREGIVERS ABILITY TO VIEW MULTIPLE PLAY AREAS AT ONE TIME

PROPOSED ENVIRONMENTAL LEARNING ZONE
Bioretention facility to treat surface runoff and new pollinator gardens. Include interpretive signage to facilitate environmental learning.



BLESSED-SCALABRINI CATHOLIC ELEMENTARY SCHOOL

QUIET TIME
Creation of an inviting forest-like space for quiet reflection, meditation, and contact with nature, including pollinator gardens, additional trees and seating.

AT YOUR SERVICE
Newly created service area with info kiosk/concession stand and seating

PROPOSED ENTRY PLAZA WITH PERMEABLE PAVING, SEATING, AND POLLINATOR GARDEN

York Hill Blvd.

- LEGEND**
- Property Boundaries
 - Proposed Trails
 - Proposed Trees
 - Existing Trees
 - Proposed Flowering Trees
 - Proposed Fruit Trees
 - Wayfinding Signage
 - Connecting Walkway
 - AZ1 Growing Together Zone
 - AZ2 Active Court
 - AZ3 Serenity Eco-grounds
 - AZ4 Community Commons

RECOMMENDED TREE LIST

- Burr Oak
- Swamp White Oak
- Black Walnut
- Black Willow
- American linden
- Catalpa
- Cucumber Magnolia
- Hop Hornbeam
- Mitten Tree
- Eastern White Cedar
- Eastern White Pine

* This map represents proposed actions and projects based on community and stakeholder feedback. Feasibility of implementation and exact locations may vary and are subject to further analysis and refinement, budgetary considerations, and continued community input during design development and implementation.
* Proposed elements within school property will be subject to further discussions with the School Board.



ACTIVITY/ADVENTURE ZONES

Provide for a variety of distinct activity or adventure zones within the park to encourage exploration and to maximize functionality throughout the entire park. Zones should be designed to accommodate and encourage interaction of all ages and abilities and should incorporate, educational signage related to each zone, and a combination of self-guided and programmed activity types.



GATEWAY FEATURES & WAYFINDING

Amplify gateway features with signage, eco-landscaping and aesthetic improvements to raise community awareness and profile of York Hill District Park. Use artistic and colourful wayfinding signage throughout park and at key spots and adjacent to GAWCC and schools to encourage visitors to explore all Activity Zones and park amenities.



EDUCATION AND INTERPRETATION

Maximize opportunities throughout the park for educational learning (nature-based, Indigenous, sports, agriculture, cultural and historical heritage) and to provide engaging experiences for visitors.



YORK HILL DISTRICT PARK

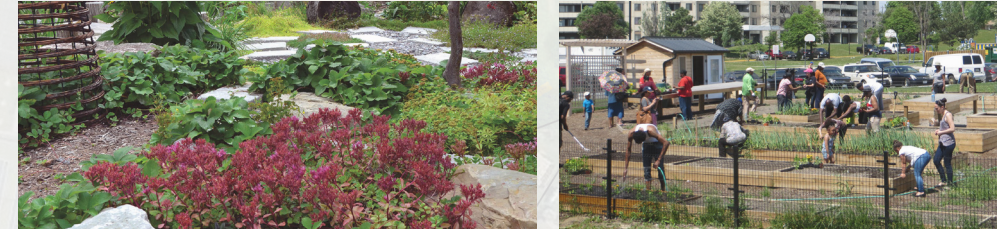
ACCESS AND CONNECTIVITY

Improve connections with GAWCC, neighbouring schools, businesses and residential areas and extend trail network within the park itself to create continuous loops and access to all Activity Zones within the park. Use permeable materials where appropriate and ensure trails are well maintained during all seasons.



ECOLOGICAL INTEGRITY

Improve ecological integrity throughout the park by planting new native trees, creating pollinator gardens and planting a diverse selection of native plants and shrubs. Contribute to wildlife habitat with bird and bat boxes, and bee hotels. Include nature-based educational signage.



STORMWATER MANAGEMENT

Consider use of permeable surfaces for new hardscaping elements and low impact development (LID) measures to treat stormwater runoff in the park, especially from hard surfaces at GAWCC, and at adjacent schools where practical. LID measures can include bioretention pond, rain gardens, infiltration trench, stormwater harvesting and treatment facilities. Include educational signage on watersheds and sustainable stormwater management.

